



**ARRIE
MAGAZINE**

Summer Edition | 2026



WELCOMING EXCLUSIVES

*preparing you for
the best 2 weeks to
come !!*

ARISTEA
WOMEN OF MIND AND HEART

WELCOMING

GUIDE BOOKLET 2026



01

Who we are and FAQ

02

Frequently Asked Questions

03

Offerings

04

Academics



05

Sports

06

Culture

07

Social Impact

08

*Letter from the
Primaria*

09

*Meet the house
Committee*

15

Meet your mentors



18

*Meet the Aristeia
Committee*

20

*Letter from the CSC
office*

21

Wimbledon Cluster

25

*"What is pre-arrival
and welcoming?"*

26

Vensters

27
28

*Pre-arrival programme
and Welcoming Schedule*

41

Food Packages

45

Merchandise

46

Campus Map

48

Emergency Contacts

About Aristeia

Aristeia is one of Stellenbosch University's eleven Commuter Student Communities (CSCs), basically your home base on campus if you're living in private accommodation. We've been around since 1973, making us the oldest womxn-only CSC at Stellenbosch (and yes, we wear that crown proudly!).

We're all about good vibes, strong values, and making sure you feel included from day one. SU's 12-day orientation program is packed with everything you need, from finding your way around campus to meeting new friends and celebrating the unique energy each of you brings.

We know starting university can feel like a lot, but you won't be doing it alone. Our leadership team is super approachable and always up for a chat. So reach out, get involved, and join in on the fun. We can't wait to meet you and welcome you into the Aristeia family!



FREQUENTLY ASKED QUESTIONS



Will I have accommodation?

Aristea is NOT a residence and therefore DOES NOT offer accommodation. We urge you to find accommodation before coming to Stellenbosch University, even if you are still awaiting residence placement. Being placed in an SU residence is not guaranteed!

If you need help finding accommodation, have a look at this link:

<https://www.su.ac.za/en/apply/undergrad/accommodation/private-accommodation>

How do shuttles and walking groups work?

Shuttles

Shuttle services are available throughout the Welcoming period but will not operate beyond this timeframe. These shuttles are completely free of charge during Welcoming, provided bookings are made before the daily cut-off time of 11:00 AM. Operating on a pre-booking basis, the shuttles depart from campus to designated drop-off points at 7:15 PM and 9:15 PM. On special occasions such as Dream Walk and Connect, shuttles will run later, as per the University's schedule. Drop-off points include police stations located 5-10 km outside Stellenbosch, ensuring safety and accessibility for all passengers.

Walking Groups

If you're concerned about attending evening events due to safety worries, don't worry, we've got you covered! Navigating an unfamiliar town in the dark can feel unsafe, but we're here to help. In collaboration with Vesta, the male CSC in our cluster, we've organized walking groups to ensure everyone gets home safely at night. There are four designated walking routes that will remain consistent throughout the welcoming period. These groups will depart every day that the welcoming program ends at 21:00 providing a secure and reliable way to get home. Have a look at the walking routes on the next page!

What can I prepare for in advance?

The weather in Stellenbosch is very hot during welcoming! We're talking 38°C! We have tried to work around the heat as much as possible, but there will be times where the sun is unavoidable. Please come prepared with lots of water, sunscreen, hats and anything that will help you keep cool!

Wait, I still have more questions!

No worries! We will have a pre-arrival program and a question poll where you are able to ask all the questions you may have! Look out for us on Instagram @aristeacsc

Offerings

SPORT

- Hockey
- Netball
- Table Tennis
- Touch Rugby
- Frisbee

CULTURE

- Molassesêr
- A capella
- Culture Evenings
- Spirit Committee
- Book Club
- Dance Club

ACADEMICS

- Mentor Faculty Groups
- Academic All Nighters

LEADERSHIP DEVELOPMENT

- House Committee
- Mentors
- Newcomers Committee
- Aristeia Committee
- Aristeia Leadership training

AND MORE...

- Podcast
- Social Impact Committee



Academics

Aristea is a community that values academic excellence and empowers students to achieve their fullest potential. As an Aristea Commuter Student, you will have access to various academic support services that are designed to help you thrive. You have access to the Wimbledon Hub which is a physical, on-campus academic and social space made for you to study, relax and connect with others during times where going home might not be ideal for you. There are various opportunities for mentor sessions, to form study groups with fellow students. Integrated learning opportunities that promote active and collaborative academic activities will be available and resources to guide your academic skills and career development. We encourage you to make full use of these opportunities as they were established to help make your academic journey, a success at SU. We hope to see you at our academic all nighters during those A2 seasons where we all come together for one common goal - becoming absolute academic weapons together !



Sports

At Aristeia, we believe that sport is more than just an activity, it's a powerful way to stay connected, energized, and grounded during your busy days on the move. For many commuter students, balancing travel, classes, and personal commitments can be challenging, and that's why we're committed to offering sports opportunities that are flexible, welcoming, and enriching.

Sport not only promotes physical wellbeing, but it also builds teamwork, confidence, and a strong sense of belonging. Over the years, our commuter students have excelled in a variety of sports, creating a supportive space where everyone, regardless of schedule or skill level, can thrive.

Our sports offerings include:

Netball: Fast, competitive, and community-driven, our netball sessions bring together students who love quick play and strong team spirit.

Hockey: A dynamic game of speed and strategy, hockey has remained one of our most popular sports.

Table Tennis: Table tennis offers agility, focus, and plenty of fun.

Boxing club: A dynamic practice for you to learn how to defend your self or just an opportunity to keep your body active.

This year, we're excited to expand our sports community with two new commuter-friendly options:

Touch Rugby: A fast-moving, inclusive game that encourages teamwork and fitness without heavy contact, ideal for a quick afternoon runaround.

Whether you're an experienced athlete or simply searching for a fun way to stay active between lectures, we invite you to get involved. You'll build new skills, boost your wellbeing, and connect with fellow commuters who share your journey. Join us, and make memories that last far beyond the commute.



Culture

At Aristeia, culture is the heartbeat of who we are, it shapes the way we connect, collaborate, and create a sense of home on campus. We proudly embrace diversity, inclusivity, and the individual experiences each commuter brings with them. Our community is built on celebration, respect, and shared growth, where every student is encouraged to express their identity while feeling truly supported and valued.

A vibrant element of our culture is our commitment to creative expression. Whether through drama, dance, music, spoken word, or visual arts, we see creativity as a powerful way to tell stories, explore perspectives, and bring people together. As commuters, we understand the importance of finding meaningful moments on campus, and our cultural activities offer the perfect space to do just that. We're excited to continue expanding these offerings in the coming term!

We provide opportunities for students to participate in workshops, performances, exhibitions, and talent showcases that celebrate the richness of our community. These experiences not only nurture artistic passion but also strengthen collaboration, enhance confidence, and create lasting memories.

Cultural activities that we offer:

A capella: For those with a love and talent for singing.

Molasessêr: A production for the lovers of all kinds of art- singing, acting, dancing etc.

Book club : For the introvert book lovers looking for others to share their thoughts and perspectives.

And more :)

Through these cultural engagements, whether you're honouring your heritage, discovering new artistic interests, or joining conversations that broaden your worldview, our aim is to foster an environment where every commuter feels inspired to take the stage, express themselves boldly, and truly thrive.



Social Impact

At Aristeia, we believe that greatness is something we unlock together. When we consistently support one another and extend a hand to those who need it, we create a community that is stronger, kinder, and capable of real change. This year, our goal is to make a meaningful impact, both within Aristeia and in the communities around us.

Our guiding motto, "Service Above Self," reminds us that true leadership comes from placing the needs of others before our own comfort or ego. It reflects our commitment to serving the community with humility, compassion, and purpose.

To live out this motto, we will be focusing on bettering the lives of disadvantaged high school learners by serving as their mentors. From sharing advice to assisting with academics, we want to be the sisters who walk alongside them, uplift them, and help them reach their potential. To drive this initiative, I will be establishing Aristeia's own Social Impact Committee, a team of passionate Arries dedicated to shaping this project into something truly transformative for the learners we support.

As students who have already made it into this institution, it is important that we show others that what once seemed impossible is achievable. We have a responsibility, as the youth, to support our younger brothers and sisters, to remind them that they belong, that they can take up space, and that their dreams are valid. The world is truly their oyster.

This is our way of giving back: bringing hope, confidence, and a spark of possibility to those who may be ready to give up. Together, we can help them believe in a future where they rise, succeed, and create change of their own!

On the 6th of February 2026, we will have our annual Social Impact morning and this year we will be collaborating with Helderberg! We cannot wait to share this day with you guys. We hope this morning will pique your interest for helping those around you.



Eco-friendly living

How to reduce your carbonfootprint
and join the Net Zero Carbon journey

Water

- Waterrestrictions still apply.
- Use only 80 L /person/day.
- Shower 3 -5 min.
- Use eco-friendly personal products.
- No rinsing or washing with running water.

Energy

- Use LED lamps only.
- Limit fridge use to one 150 L bar fridge per room.
- Airdry clothes when possible.
- Turn off lights & unplug devices when not in use.
- Use A++ energy efficient appliances (low wattage).

Transport

- Everything is within easy walking distance on campus.
- Walk or cycle instead of driving.
- Hire a Matie bike.
- Share rides or use shuttles.

Get involved

- Joinyourcommunity Green/ Sustainability Com.
- Follow: @su.environmental.sust

Waste

- SUhasa zero waste to landfill goal.
- Buy less items that must be thrown away.
- Bring reusable bags, cups, bottles and containers - no single use items.
- Compost food scraps & sort recyclables properly.
- No wet items in the recycling bin.

Letter from your Primaria

Dear Aristeia Member (Arrie)

I would like to start by saying thank you for choosing Stellenbosch University and secondly, welcome to Aristeia! Some of you may have had multiple university options, while for others, this might have been your dream choice. Either way, you got in, and you've chosen to have your university experience as a Matie! Not only are you a Matie, but you're also an Arrie, whether you've realized it yet or not.

Let me tell you, as someone who once was apprehensive about the idea of an all-female anything, whether that was a school or any space for that matter because of my past experience in high-school and didn't own a single purple item, to now being a proud Womxn of Mind and Heart with purple blood in my veins and more purple clothes and accessories than I can count, there is so much to look forward to.

As Welcoming slowly approaches and thoughts about university life fill your mind, whether this is your first time living without your parents and entering your "Adulging Era", or you'll be commuting from home, everyone has pretty much the same questions. And the answers are simple: Yes, you will fit in. Yes, you will find community and yes, you won't be left alone. There will be people readily available to help you. These really are some of the best years of your life (except during exam season, but we'll get through that together). All you have to do is open yourself to the experience and not shut yourself out.

Everyone and I on the House Committee, Mentors, and Aristeia Committee are waiting with eager anticipation to meet you and show you why being a Matie and an Arrie is the best combo ever. It won't always be sunshine and roses on a wine farm, but the connections you make along the way will make it so much better. Speaking from experience, many of my closest friends right now, both studying the same thing as me and studying something completely different, I met during my Welcoming, and I wouldn't trade them for anything in the world.

What I'm trying to say is that Aristeia will be your home away from home if you give us a chance. So, get excited! Start imagining purple becoming your favourite colour if it isn't already, because you'll see it EVERYWHERE! If you ever feel overwhelmed, confused, or just need a good laugh, we have a group of people always ready to support you. I'll be on the WhatsApp groups you'll join (link is further down this booklet) for easier access, and you can also email me at: aristeaprim@sun.ac.za

2026 is going to be such an amazing year for you, and we would love to be part of your journey! Here's to years of laughter, late-night study sessions at the Hub, unexpected friendships, and all the incredible experiences we'll share together. Get ready, because Aristeia and Stellenbosch are about to blow your mind. I cannot wait to see your purple passion!

Carbel

08.



Carbel Nkenda

Position: Primaria

Portfolios:

External Relations,
Discipline and Constitutional
Policies,
Maintenance & Equipment,
Leadership Development

House Committee

Every community in Stellenbosch has a House Committee, students often refer to it as the “HC”. The House Committee is elected by the members of Aristeia in July or August every year. Everyone in the committee is responsible for a specific set of portfolios and you will spend a lot of time with them during Welcoming and throughout the year.

You have already met your Primaria, Carbel. The rest of our committee consists of our Vice- Primaria, Head Mentor, Strategic Financial Manager, and General HC members. If there is ever an emergency, you can approach any of our 10 members and we will be happy to assist.

Let's meet the team!



House Committee

VICE - PRIMARIA

Erin Ring

Hello to the new Arries joining our family! My name is Erin Ring, and I have the absolute joy of serving as the Vice-Primaria of Aristeia for the 25/26 Leadership term. Firstly, I want to start by sending you the warmest welcome as you begin this exciting new chapter. We are so excited to have you here with us.

As you step into this community, my hope is that you feel supported, seen, and uplifted by people who want the very best for you. Our goal this year is to create a space where you can flourish, make meaningful friendships, and feel at home from the very start. I hope that you find comfort in knowing that you belong here exactly as you are. There is so much possibility waiting for you, and I cannot wait to witness the incredible things you'll do.

I am here to walk this journey with you, whether you need guidance, reassurance, or a shoulder to lean on and a listening ear. You are never alone. My door, and heart, are always open, and I can't wait for us to create some unforgettable memories together.

Let's make the next year of your journey full of growth, laughter, courage and connection. I am so excited to meet each and every one of you and start this beautiful experience together. Welcome to your home away from home, Aristeia is ready for you!

Erin

HEAD MENTOR

Jessica Fourie

Hey Everyone! I'm Jessica and I can't wait to meet you!! Welcome to Aristeia, this is more than just a community, you are joining family that celebrates individuality and uplifts every person who forms part of it. It's here where you will start your university experience and meet lifelong friends while making the best memories - I can't wait to be apart of your exciting journey!

You have already achieved so much, and you can be so proud of how far you've come, use every opportunity and get involved wherever you can - this chapter is filled with possibilities! My amazing mentor team and I will be here for you, available anytime to help you with anything you need. We can't wait to meet you and welcome you into our home away from home.

I can't wait to see the incredible things you will do!

Jessica



Portfolios:

Internal Relations, Welcoming Leader, Discipline and Constitutional Policies, Food and Safety

Projects:

Huisfonds Dans 2



Portfolios:

Academics, Socials

Projects:

Huisfonds Dans 1

House Committee

SECRETARY

Sarah Leigh Parish

Dearest Arries!

Firstly, a huge congratulations on your acceptance into Stellenbosch University. I cannot wait to meet each and every one of you as you step into University Life.

Aristea is a community built on the foundations of creating a welcoming and safe space for all our members. When I joined Aristea in 2024, I was welcomed into a space where I knew I could take risks, try new things and grow into the women I am meant to be.

I'm so excited for you all to have the most incredible O-Week. I want you to know that we have crafted a schedule that is centred around answering any questions you may have about University and assisting you in creating connections before you start classes. So get ready for a year of learning, laughter and friendship.

We cannot wait to share our Purple Passion with you all!

Sarah

ARISTEA COMMITTEE MANAGER

Lynne-Leigh Brown

Hello Arries !

Congratulations on becoming a Matie ! My name is Lynne-Leigh Brown and I am part of the House Committee as the Aristea Committee Manager. A second congratulations on becoming a member of Aristea, the best all-female CSC on campus !

This year, you are entering a new phase in your life. This period encompasses a whole lot of transitions and explorations. We, as Aristea will be your foundation throughout this period, an anchor to lay down the roots and a home away from home. Whatever milestones you may reach, Aristea will be right by your side to cheer you all along the way.

Keep an eye out on our socials for the pre-arrival programme. We cannot wait to interact you and meet you on the first day of welcoming.

P.S. our core colour is purple so get ready to fill your wardrobe with purple accessories.

Much love, XO

Lynne



Portfolios:

Merchandise, Welcoming Admin

Projects:

House Dance, Alumni



Portfolios:

Academics, Critical Engagement

Projects:

Aristea Week 2

House Committee

SPORTS ADMINISTRATOR

Mahika Naidoo

To the newcomers of 2026

Dear newcomer of 2026, first of congratulations on getting accepted into Stellenbosch University, that is such an amazing accomplishment. A little heads up from my side is that you will find university is very different to high school, it is harder I'll admit. However, it does become a bit easier once you've developed your own pillars of strength through friendship and lucky for you that is what Aristeia is here for. We are here to make the transition into this new phase of your life slightly easier by giving you platforms to help you find people resonate with or even find a version of yourself that you'd like to get to know better. Here at Aristeia we have a saying that we are "Women of Mind and Heart", take this as a reminder that the women of Aristeia are your sisters who are here to help you find the best path for you that allows you to have an open-mind and a heart full of compassion.

All the best in this new phase of your life <3

Lots of love,
Your fellow ARRIE.

Mahika

NEWCOMERS COMMITTEE

MANAGER

Emmah Sutton

Welcome to Aristeia, the best community by far, but I might be a little biased, join us for Welcoming and throughout the year, and I am sure you will be convinced.

Before anything else, I want to acknowledge what an incredible achievement it is to be accepted into this university. Stellenbosch is known for its high standards, and being accepted reflects the effort, hard work and perseverance that has brought you to this moment, and we are excited to support you as you begin this new season in your life.

Aristeia is a community where meaningful connections are built, where you meet people from different backgrounds and walks of life. This is where your dreams begin to take shape, and where you have the chance to grow into the person you imagine yourself becoming.

Think of Aristeia as your home away from home, a space where you can be yourself, feel safe, and belong. It is everything you hope your university experience will be, and often so much more. This is a community filled with moments you will carry with you long after your time at Stellenbosch, from bucket-list experiences to friendships that feel like family.

I cannot wait to welcome you in person. We are truly excited for everything we have planned for you. Travel safely, bring your energy, and get ready for an unforgettable start to your journey.

Emmah

12.



Portfolios:

Cluster and Culture

Projects:

Derby, Connect



Portfolios:

Welcoming Planner

Projects:

Aristeia Week 2

House Committee

FINANCIAL MANAGER

Kimberly Nyagondore

Hey fellow Arries!

I hope you're as excited as I am to be joining Aristeia and more so the amazing Maties family. Aristeia's going to kickstart your Stellenbosch journey with a bang, tons of GEES, and all the support you'll need along the way.

I'm Kimberly, and I'll be serving as your Financial Manager this year, basically the one making sure Aristeia doesn't go into debt while we bring all our wild, fun, wholesome ideas to life.

I'm also part of Wellness, Spirit, and Derby, so expect lots of good energy, support, and hype from my side throughout the year. And of course... I'm your Connect HC! Connect is our super fast-paced competition where we create a whole play and a dance in just 15 minutes and battle it out against other residences. It's chaotic, creative, hilarious, and honestly one of the most fun parts of welcoming and I can't wait to experience it with you.

As a wellness junkie and someone who genuinely loves seeing people thrive, I'm here to help make sure you feel grounded, supported, and truly at home in Aristeia. Whether it's during events, competitions, or just chatting, you can always count on me.

I cannot wait to meet you all and make this year unforgettable. Here's to new friendships, new experiences, and lots of Aries GEES!

Kimberly

SUSTAINABILITY ADMINISTRATOR

Buchule Mjokwe

A very warm and purple welcome to Aristeia! This is the start of an exciting journey filled with growth, sisterhood, and fun. I am absolutely thrilled to be a part of it. Our community is more than just a student organisation; it's a family full of sisters ready to pick you up when you feel down and celebrate you when you've achieved a milestone, of which you already have, and I am so delighted to welcome and celebrate you!

My tip for you is to enjoy every single minute here. Every day counts. Make the most out of your days. Your voice matters. You didn't come this far to just come this far. Now get ready to change your wardrobe to everything purple! I am so excited to see your faces!

Buchule



Portfolios:

Wellness, Spirit Committee

Projects:

Connect, Derby



Portfolios:

Social Impact, Welcoming Leader

Projects:

Aristea Week 1

House Committee

SOCIAL MEDIA & MARKETING MANAGER **Pholani Mtati**

To the Arrie reading this, it brings me so much excitement to say, welcome to, in my opinion, the best university ever and welcome to the most vibrant community on campus !

I hope you've given yourself the biggest pat on your back. You've worked so hard to be in this position and I have no doubt in my mind that with the right tools, you will flourish both at SU and within this community. Tools that Aristeia has carefully crafted to ensure that you do just that, flourishing in navigating this incredibly significant chapter in your life.

Grab every opportunity to be the best version of yourself, to grow, to build community and contribute to something bigger than yourself and watch how with Aristeia by your side, you undoubtedly become who you've always believed you could be, and even better !

Welcoming goes by so quickly thus I encourage you to soak up every moment of it because in the blink of an eye, these next few weeks become your fondest memories at SU.

I can't wait to fill up our platforms with your beautiful faces to represent our community.
See you soon soon, YOU DID IT !!!!!

Pholani



Portfolios:

Critical Engagement, Virtual Engagement,
Sponsors

Projects:

Aristeia Week 1, House Dance

Mentors 2026

These lovely individuals are the people who will guide and support you, while walking this amazing journey with you. They're here to help you settle in, find your way, and make the most of every opportunity that comes your way. They will be your biggest cheerleaders as you start this chapter and they really are here for you. Whether you're seeking advice, a friendly conversation, or need a coffee in exam season, the mentors are here for you.

In the pictures below, you will see the friendly faces of people who are excited to help you feel at home from day one. We can't wait to meet you!



Layla Barnard



Pheny Molopyane



**Matshidiso
Ramatisa**



Lilitha Tshangana



Kyrah Thomas



Amanda Galloway

REALTORGREETSITE.COM



Brooklynn Oliver



Chelzeigh Bonthuys



Hope Mnguni



Syd Chapman



Oratile Manare



Skylar Schultz



Ursula Masuku



Simone van Gensen



Sarah-Joy Moses



Gadijah Abrahams

Aristea Committee

The Aristea Committee is a group of dedicated Arries who will be part of creating a warm and inclusive environment for you during welcoming and throughout the year. Otherwise known as the welcoming/seniors committee, we are a team that is passionate about you the ropes, offering guidance as well as sharing valuable insights from their own lens within Aristea through the years. Together with the mentors, we're here to make your transition smooth and help you thrive at Stellenbosch University.



Lauren Van Der Westhuizen



Sibonisiwe Matakane



Jessica Johnathan



Dashrey Mphahlele



Eve Bosanquet



Laylaa Abrahams



Sivuyisiwe Sonjani



Amahle Matyobeni



Angelina Baxter



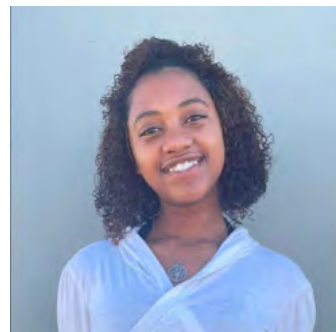
Chandre Fortuin



Thandiswa Dube



Mila Magcoba



Aaminah Souma

CSC Office

Dear Prospective Arrie,

Congratulations on your provisional acceptance to Stellenbosch University, and a warm welcome to Aristeia! Studying at SU is both a great honour and an exciting opportunity. As you prepare to begin this new chapter, we wish you every success as you take the first steps in your university journey. Please note that your allocation to the Aristeia community is conditional and subject to you receiving an academic offer and successfully registering at Stellenbosch University.

The Commuter Student Communities Unit at Stellenbosch University is responsible for managing the Aristeia Community, together with its House Committee and mentors. We form part of your support network and are here to assist with your academic and social integration at SU. Please feel free to reach out if you have any questions or need guidance along the way.

Aristeia is a values-driven community, and these values guide everything we do. Being part of Aristeia will allow you to forge new paths, build meaningful relationships, and discover innovative ways to grow both personally and academically.

The Commuter Student Communities (CSCs) model ensures that students living in private accommodation remain connected to one another and to campus life. Through a combination of in-person and virtual engagement, Aristeia offers a range of opportunities to participate in community activities, mentorship, and events even when you are off campus.

We encourage you to make the most of every opportunity that comes your way. At Stellenbosch University, your academic programme is only one part of your developmental experience. Aristeia will help you become a well-rounded graduate, ready to thrive in an ever-changing world.

We look forward to welcoming you into the Aristeia community with open arms.

Warm regards,
Commuter Student Communities Unit



Centre for Student Life and Learning | Student Affairs | iMiba yaBafundi | IZiko lamaQumrhu aBafundi Studentesake |
Sentrum vir Studentegemeenskappe
+27 21 808 3064 | ssg@sun.ac.za | www.sun.ac.za
Private Bag X1 | Privaat Sak X1 | Matieland 7602 | South Africa | eMzantsi Afrika | Suid-Afrika 11 Bosman Street | 11
eBosman Stalato | Bosmanstraat 11

Our Cluster

WHAT IS A CLUSTER?

A cluster is a larger student community made up of various residences and CSCs that are geographically close to one another. The concept of cluster was introduced in 2007 as a way to connect and involve commuter student community (CSC) students with the activities and facilities available to students living in university and to create network opportunities for all.

Clusters promotes community building, offer a wider support structure and allow for collaboration and innovation to take place. They provide platforms that enable holistic development, networking opportunities, foster belonging, promote active citizenship and integrate and bridge gaps between different members of society through engagement.

Welcome to Wimbledon Cluster!

The Wimbledon Cluster consists of six communities that are all situated in the area surrounding the Wimbledon Hub. These include:

Aristea | Vesta | Eendrag | Helshoogte | Sonop | Irene

During Welcoming, you will have the opportunity to meet fellow students in the cluster and make friends outside of your community (residence or CSC). Cluster Interaction and Cluster Day during Welcoming is your first opportunity to engage with communities in Wimbledon. It is really something to look forward to!

In addition to being part of such a vibrant and spirited cluster, you have the added option of booking meals at the residences with open dining halls that form part of the Wimbledon Cluster, especially at the monthly "First Wednesday" lunch. The Wimbledon Hub also sells food and has a quiet space for studying.



Meet Wimby!



During welcoming you will meet the Wimbledon Cluster Conveners, Carina Steytler and Corne Prinsloo, who are responsible for creating a platform for engagement and connection.

The cluster experience provides you with the opportunity to network and form academic and social contacts. The cluster has events during the year, where you can look forward to opportunities for personal growth and meeting new people. Cluster events are very special and exciting for new maties.



CLUSTER NEWCOMERS

ATHLETICS DAY

COETZENBURG ATHLETICS
STADIUM

5 FEBRUARY 2026 17:30 - 20:30



PRESENTED BY THE CENTRE FOR
STUDENT LIFE AND LEARNING AND
MATIES SPORT



Meet the Cluster Convenors



Congratulations on embarking on this incredible journey at our university! We want to extend a warm welcome, not only to Stellenbosch and your respective student communities, but to your greater Wimbledon Cluster!

We're overjoyed to welcome you to the place we proudly call our second home, a space where we're working tirelessly to make sure you feel like you've found your second home too.

University is a place of growth, discovery, and transformation. It's a time to embrace change, and challenge yourself. As you navigate through the streets of Stellenbosch, remember that it's okay to feel a mix of excitement and nervousness. You are not alone—everyone around you is on a similar journey.

Embrace the change that comes with university life. This is a unique opportunity to expand your horizons, both academically and personally. Step out of your comfort zone, join committees, attend events, and meet new people. The diversity of experiences and perspectives on campus is vast, and it's in these interactions that you'll discover new passions and forge lasting connections.

Now, you may be trying to digest all of this new information being thrown your way. Let's break down what our Cluster is... Wimbledon is our bridge between our 6 student communities, namely: Aristea, Vesta, Sonop, Irene, Eendrag, and Helshoogte. Wimbledon offers you a host of events, clubs, sports, personal and professional development opportunities and social events to ensure you are exposed to students from different communities. Cluster also offers you the Wimbledon Hub, conveniently located at the epicenter of our communities - it is a place to study, meet up with friends, grab food, and relax.

Cluster will be introduced to you during welcoming, and we are so excited to call you a WimbleWinner!

We can't wait to witness the incredible impact you'll make.

Best wishes for a fantastic journey ahead.

We cannot wait to meet you!

Our 2026 Wimbledon Cluster Convenors: Corne & Carina

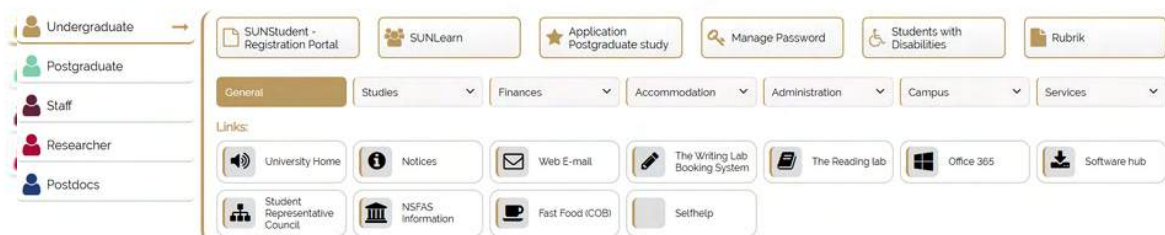


Feeling a little hungry on campus? Wimbledon's got you!



HOW-TO GUIDE FOR CSC STUDENTS TO REGISTER THEIR STUDENT CARDS TO BOOK MEALS IN OPEN DINING HALLS IN CLUSTERS AND CHANGE THEIR COB RATIO/PERCENTAGE (PAY-AS-YOU-GO SYSTEM)

- Access the MySun portal via the University's website.
- Click on Accommodation.



- Click on Meal Booking.
- Username & Password.
- Register. (Your card will only be activated at the dining hall door after you have had booked your first meal there)
- If the system doesn't allow you to book a meal, send an email to cscu@sun.ac.za to be allocated to your cluster on the system. (Initials, surname and student number)

Funds must be **available** in the student account before meal bookings can be done.

Methods to pay funds into student account:

Do a card payment online via the University's website (Fees, Payment by third party);
OR make a payment into your meal account at the cashiers in the Admin A Building;
OR use SnapScan.

Useful links:

Student fees online payments:
<https://www.su.ac.za/en/apply/undergrad/fees/payment-options-and-methods-payment>

How to change your COB ratio/percentage:

- Send an e-mail request to lab@sun.ac.za (Initials, surname and student number)

How to be allocated to a Halaal dining hall if not available in your cluster:

- Send an e-mail request to lab@sun.ac.za (Initials, surname and student number)

Dining Hall Access Enquiries:

- Send an e-mail request to lab@sun.ac.za (Initials, surname and student number)

General COB and Meal Account Enquiries:

- Meal Account, uploading of quota against student account and COB Queries at Student Fees department, Admin A: Email: tyholweni@sun.ac.za (Initials, surname and student number)

OPEN DINING HALLS PER CLUSTER:

CLUSTER	DINING HALL	HALAAL
amaMaties	Tinie Louw	No
Rubix	Heemstede	No
Victoria	Harmonie	Yes
	Monica	Yes
VicMeyr	Huis ten Bosch	No
Validus	Simonsberg	No
	Goldfields	Yes
Wimbledon	Irene	Yes
	Eendrag	No
	Helshoogte	No

What is Pre-Arrival and Welcoming?

We offer diverse activities that will hopefully spark your curiosity to all that Stellenbosch has to offer. During Pre-Arrival, we offer various information and activities, while you're still home, to prepare you for your two week journey during Welcoming to prepare you for life beyond the Welcoming period.

Welcoming takes place when you arrive in Stellenbosch and offers you activities that include sport, culture, academic assistance, as well as personal and leadership development. See Welcoming as the trailer to the rest of your time as an Arrie and a Matie.

Here at Aristea, we pride ourselves on individuality. As we walk this path with you, we want you to make memories, meet new people, and most importantly, have the time of your life all the while discovering who you are and where you fit into the greater university structure.

We are extremely excited to meet all of you. This is the start of the best time of your life, and we are honoured that we get to be a part of it. So, bring along your authentic self and an enthusiastic energy, we are ready for twelve days of non-stop fun, we hope you are too!





Vensters 2026



Our Connect partner for 2026 is
Helderberg Residence.

Our name for vensters will be **"The Republiek of HELDERSTEA"**

Together we are one and will be called HelderStea. We truly think by combining our names we embrace our communities and that we can embark on this connect journey as one.

"Vensters" will be our chance to show off what our combined communities has to offer when it comes to our cultural capabilities. It is a great way to get to know new people and start your new adventure at Stellenbosch University.

Our spectators can be excited to see what we will bring to the stage from singing to dancing and just having fun. We embrace the cultures at Stellenbosch University and indulge into a whole other perspective of how it is to be at university and discover more about yourself.

Our theme this year is **"Carnival of Dreams"** and we can not wait to make some beautiful memories with you!



The Pre-Arrival Programme

(full programme will run online from 19 - 24 January 2026)

19 January 2026

Activity	Time	Platforms
■ Get to know Aristeia	12:00	WhatsApp, Instagram, TikTok
■ Purple Passion competition	12:30	WhatsApp, TikTok, Instagram
■ Mindful Monday – Wellness	13:00	WhatsApp, Instagram
■ Upcycling competition launch	13:30	WhatsApp, Instagram

20 January 2026

Activity	Time	Platforms
■ Mentor introductions	12:00	Instagram, TikTok, WhatsApp
■ Get to know your mentors	12:15–12:30	Instagram, WhatsApp, TikTok
■ Mentor advice – Stellenbosch 101	12:30–13:30	TikTok, WhatsApp, Instagram
■ Take a step Tuesday	13:30	WhatsApp, Instagram

21 January 2026

Activity	Time	Platforms
■ Intro to Cluster + Leaders	12:00	WhatsApp, Instagram, TikTok
■ Cluster 101 videos	12:30	Instagram, TikTok
■ Wellness Wednesday	12:00	WhatsApp

22 January 2026

Activity	Time	Platforms
■ Faculty video distribution	12:00	Instagram, TikTok, TikTok,
■ Faculty building tours	12:30	Instagram, Instagram,
■ Throwback Thursday	12:30	WhatsApp, Spotify

23 January 2026

Activity	Time	Platforms
■ Sustainability 101 videos	12:00	WhatsApp, Instagram, TikTok
■ Upcycling reminder	—	WhatsApp
■ Connect Friday	12:30	WhatsApp, Instagram

24 January 2026

Activity	Time	Platforms
■ Positive SU facts	12:00	Instagram, TikTok
■ Molasseser & Venster 101	12:30	WhatsApp, Instagram, TikTok

The Welcoming Schedule:

Most of the activities in this program are high-energy and involve physical movement, large crowds, and elevated noise levels. Participants can expect to engage in activities that include cheering, loud music, singing, and other forms of high-intensity sound. These activities often take place in large group settings, typically ranging from 50 to 500 people.

Mentor sessions are an exception. These sessions are conducted in smaller groups of fewer than 30 people and are designed to allow for lower-intensity interactions, more personal engagement, and a calmer, more structured environment.

While venues for the program are still being confirmed, we are committed to ensuring that all spaces used will be made accessible and inclusive for students and staff with disabilities or special needs.



Please can you wear purple



REGISTRATION DAY:

Monday 26th January 

09:00- 11:00	Registration @ TBC (Check Social Media and WhatsApp Groups)	18:45 - 19:00	Wrap Up Of The Day @Wimbledon Hub
11:00-12:00	Formal Welcoming – Q & A @ Wimbledon Hub	* 18:00-20:00	Law Program Walking Groups To The Law Faculty (Old Main Building)
12:00-13:00	Lunch @ Wimbledon Hub	19:00	Shuttle
13:00 -14:00	Mentor Session @ Wimbledon Hub	20:00 - 22:00	Law Cluster Interaction Debate (More Info TBC) @ TBC
14:00 - 16:00	ARRIE ARCADE @Wimbledon Hub		
16:00 - 17:00	ARRIE Chants @ Tennis Court		
17:00-18:45	Leadership Venters Throwback @ Tennis Court		





Tuesday 27th January

*** 08:00**

Law Students
@Neelsie (My Brew)
Mentors Or HC Walk
Law Students

*** 08:30 - 16:00**

Law Faculty Program
Law Faculty (Old Main
Building)

08:30 - 09:00

Arrival
@Wimbledon Hub

09:00 - 09:15

Rundown Of The Day
@ Wimbledon Hub

09:15 - 09:45

Language Of The Day
@ Wimbledon Hub

09:45 - 12:00

Amazing Race
Around Campus

12:00 - 13:00

ARRIE Anthems
@ Tennis Courts

13:00 - 14:00

Lunch
@TBC

14:00 - 16:00

Critical Engagement
-Redfrogs
@ Oude Molen

16:00 - 17:00

Social W/Olympus
Arrive At the Tennis Courts

17:00-18:45

Get To Know You HC
@ Tennis Courts

18:45 - 19:00

Wrap Up of the Day
@ Wimbledon Hub

19:00 - 19:15

Shuttles





Wednesday 28th January

* 08:00-12:00	Law Faculty Program Continues (Old Main Building) Meet Leadership @ Neelsie (My Brew)	18:15 -19:00	Meet For 2026 Photo @Daniecraven
10:00 – 15:00	Information Session for Differently Abled Students Room 357 (3rd Floor), Arts And Social Sciences Building	19:00 - 20:00	Dinner Field Outside Danie Craven
10:00-10:15	Arrive @wimbledon Hub	20:00 -22:15	Dreamwalk On Victoria Street
10:15 - 10:30	Rundown Of The Day @Wimbledon Hub	20:00 - 22:15	Neelsie Fair @ Neelsie
10:30 - 12:15	#Makeyourmark & Paint Your Passion (Poster making) @Wimbledon Hub	22:15	Shuttle
12:15 - 13:15	Lunch @ Helshoogte Men's Residence	<div>Handed out on the day!</div> 	
13:15 - 14:00	Mentor Session – ARRIE Values @ Wimbledon Hub		
14:00 - 15:00	ARRIE Anthems @ Tennis Courts		
15:00 - 15:30	Get Ready for Danie Craven @ Wimbledon Hub		
15:30 - 17:00	Move To Danie Craven		
17:00 - 17:30	Informal Program @Daniecraven		
17:30 - 18:15	Formal Danie Craven Program @Daniecraven		



Thursday 29th January

07:45 - 08:00 Arrival
@ Wimbledon Hub

08:00-8:15 Language Of the Day
@ Wimbledon Hub

08:15 - 08:30 Rundown Of the Day
@ Wimbledon Hub

08:30 - 09:30 Cluster Introductions & Cluster
Welcoming Photo2026
@TBC

09:30 - 12:30 CLUSTER DAY
With Cluster

12:30 - 13:30 Social W/Vesta
@ Tennis Courts

13:30 - 14:30 Lunch
@ Tennis Courts

*** 14:00 - 16:00** Academic Program

16:00 - 18:00 Get Ready Right
Out/ Night Out

18:00-18:15 Meet @ The Hub
@ Wimbledon Hub

18:15-18:30 Walk To Ouden Molen
@ Victoria Hub

18:30-19:00 Interaction And Walking
to the Club/ Movie
Mocktails (Walk to the
Hub)
@ TBC

19:00 - 21:00 Night Out/Movie
Mocktails
@ Wimbledon Hub

21:00 - 21:15 Shuttles



Green
Shirt



#WimbleWinners





Friday 30th January

*** 07:30** Academic Walking
Groups with Leadership
@ Neelsie My Brew

*** 08:00 - 12:00** Academic Programs

11:30 - 11:45 Arrival
@ Wimbledon Hub

11:45 - 12:00 Rundown Of The Day
@ Wimbledon Hub

12:00 - 12:30 Walk To Coetzenburg
Centre

12:30 - 12:55 Lunch
@ Coetzenburg

13:00 - 14:30 Theatre Production
@ Coetzenburg Centre

14:45 - 16:15 Pool Party
@ Maties Sport
Swimming Pool
(Outside)

16:30 - 18:00 Welcoming/ Societies
Fair
@ Coetzenburg B&C
Rugby Fields

18:00 - 19:15 Get Ready for
Inarriegation

19:30 - 22:00 **Inarriegantion!!!**
@TBC

22:30 Aristeia Shuttles



Bring a Swimming
Costume, Towel &
Active Wear !



Saturday 31st January & Sunday 1st February

08:00 – 09:30
Saturday 31st

Maties Sport Colour Run
@ Maties Sport Gymnasium



Rest And Reset

@Home

After a full week of socialising, activities, and excitement, these two days are intentionally kept free to allow newcomers time for personal responsibilities, unpacking, self-care, and any preparations needed to transition smoothly into university life.

We look forward to commencing on Monday!



See you soon Arries xx





Monday 2nd February

- 07:45 - 08:00** Arrival
@Wimbledon Hub
- 08:00 - 08:30** Language Of the Day
@Wimbledon Hub
- * 08:30 - 09:00** Walk To Academic Programs with Leadership
- * 09:00 - 12:30** Academic Program
- 12:30 - 13:30** Lunch W/ Eendrag
@Rooiplein
- * 13:30 - 14:30** Academic Program
- 14:00 - 15:30** Social w/Harmonie
- 15:30 - 17:00** Social W/ TBC
- 17:00 - 18:00** Aristea Committee Takeover
@TBC
- 18:00 - 19:00** Dinner
@TBC
- 19:30 - 21:00** 1st Connect Practice
@ Wimbledon Hub
- 21:15** Shuttles





Tuesday 3rd February

- 08:00-08:15** Arrival
@Wimbledon Hub
- 08:15 - 08:30** Rundown of the Day
@Wimbledon Hub
- * 08:30 - 09:00** Walk To Academic Program
- * 09:00 - 12:30** Academic Program
- 12:30 - 13:30** Lunch
@ Simonsberg Men`s Residence
- 18:00 - 19:00** Dinner W/ Aurora
@ Aurora
- 19:00 -20:00** Karaoke W/ Aurora
@ Aurora
- 21:15** Shuttle





Wednesday 4th February

07:45 - 08:15 Language Of the Day
@ Wimbledon Hub

08:15 - 08:30 Rundown Of the Day
@ Wimbledon Hub

*** 08:30 - 09:00** Walk To Academic
Program

09:00 - 12:00 Academic Program

12:00 - 13:00 Lunch

*** 13:30 - 15:30** Academic Programs
(Extra Time)

15:00 - 16:30 Social W/ Khayalehtu
@TBC

16:30 - 19:00 Purple Splash
@ TBC

19:15 Shuttle



Wear a white shirt
you don't mind
getting splashed
with purple





Thursday 5th February

- 07:30 - 07:45** Arrival
@ Wimbledon Hub
- 07:45 - 08:00** Rundown Of the Day
@ Wimbledon Hub
- * 08:15 - 10:00** Compulsory Faculty
Benchmark Test for All
Newcomers of Science
and Agriscience.
- 08:00-09:30** SDG Scavenger Hunt
@ Wimbledon Hub
(TBC Cluster)
- 09:30 - 12:00** Social W/Goldfields
@Goldfields
- 12:00 - 13:00** Walk To the Hub and
Cool Down Session
@ Wimbledon Hub
- 13:00 - 14:00** Lunch
@ Wimbledon Hub
- 14:00 - 16:00** Connect Practice W/
Helderberg
@ TBC
- 16:00 - 16:30** Walk To Coetzenburg
- 16:30 - 17:30** Dinner
- 17:30 - 21:00** CLUSTER NEWCOMERS' ATHLETICS
MEETING
Maties Athletics Club, COETZENBURG
Compulsory For All Cluster Members &
Supporters
- 21:00** Shuttles



Fun Active
Wear





Friday 6th February

08:00 - 08:15

Arrival
@ Wimbledon Hub

08:15 - 8:45

Language Of the Day
@ Wimbledon Hub

8:45 - 09:00

Rundown Of the Day
@ Wimbledon Hub

09:00 - 12:00

Social Impact Morning
w/ Helderberg
@ Wimbledon Hub

12:00 - 13:00

SRC Road Show
@ Wimbledon Hub/
Tennis Courts

13:00 - 14:00

Lunch
@Tennis Courts

14:00 - 16:00

Connect Practice
@ Tennis Courts

16:00 - 17:00

Cool Down session

17:00 - 19:30

Connect Practice
@ Tennis Courts

19:30 - 20:00

Walk To Coetzenburg

20:00 - 20:30

Dress Rehearsal
@ Danie Craven

21:00 - 22:00

Arrie Blossom Night
@TBC

22:30

Aristea Shuttles



Active Wear





Saturday 7th February

- 08:30 - 08:45** Arrival
@ Wimbledon Hub
- 8:45 - 09:00** Rundown Of The Day
@ Wimbledon Hub
- 09:00 - 11:00** Mentor Session
@ Wimbledon Hub
- 11:00 - 13:00** Connect Preparations
@TBC
- 13:00 - 14:00** Lunch
@ Irene Kitchen
- 14:00 - 16:00** Connect Preparations
@TBC
- 16:00 - 23:00** **CONNECT!!!**

All black active wear/
comfortable clothes
do perform in



Sunday 8th January

Congratulations! You have made it to the end of Welcoming. We hope you have had a great time, created wonderful memories and formed meaningful connections. Time flies when you are having fun, but the fun doesn't stop here. We can't wait to see you throughout the year.

After a busy 2 weeks, you have definitely earned some well-deserved rest. Use this day to relax and recharge as you prepare for your first day of university classes. Remember, don't hesitate to reach out, we're always here to support you. 🌸



December 2025

Dear Prospective Student

CHARGING FIRST YEAR WELCOMING PACKAGES TO STUDENT ACCOUNTS 2026

Welcome to your Commuter Student community at Stellenbosch University! You have been assigned to a CSC (Commuter student Community) as you have not chosen to stay in an SU residence in 2026. During the annual welcoming period in the beginning of the year, communities take responsibility for exposing first years to Stellenbosch University in a welcoming manner.

Because CSCs do not have a dining hall (although some CSCs will arrange meals for their students in dining halls during the welcoming period) where students can enjoy meals, CSC first years are provided with “welcoming packages”. These packages usually consist of several meals, clothing, and other items unique to each community. During CSC registration on the first day of Welcoming (Monday 26th January 2026), you will have the option of purchasing one of these welcoming packages at a set price (which may vary from community to community). Each CSC will also offer different options (both clothing and meals, only meals, only clothing, etc.) that students can then select. Please see the bottom of this email for more information.

Stellenbosch University utilizes a cashless system to allow students to purchase these packages hassle free. You, or your parents or guardian, will have to sign an acknowledgment of debt on the day so that the clothing, food, etc. for the welcoming period can be made available to you. After registration the cost will be charged to your student account to be paid with all other student-related expenses. Please note that once the form is signed you will be liable for the costs of the package selected, regardless of you having all the meals or not, or not wanting the clothing after the first few days.

Acquiring the “welcoming packages” is not compulsory, but we do want to encourage you to take the opportunity to do so as it will make your welcoming period a much more enjoyable experience. Please find attached the form for your completion. You are welcome to print the form and bring it along.

If you have any questions, feel free to contact us at cscu@sun.ac.za

PERMISSION: CHARGING COST OF WELCOMING PACKAGE TO 2026 STUDENT ACCOUNT

DETAILS OF STUDENT

NAME AND SURNAME:

STUDENT NUMBER:

CSC:

CHOICE OF WELCOMING PACKAGE (MARK WITH AN X):

FULL PACKAGE (Clothing and Meal Package) COST: R	ONLY MEALS COST: R	ONLY CLOTHING Full PACKAGE COST: R
R1050,00	R 550,00	R500,00

By signing this form, you commit in writing to the following:

I hereby grant permission that the cost of the welcoming package may be charged to my student account.

I understand that acquiring the welcoming package is not compulsory.

I understand that if I sign the form, I must pay the costs and I will not be able to be reimbursed¹.

SIGNATURE OF STUDENT OR GUARDIAN:

DATE:

.....

.....

¹Please take note that we usually do not reimburse students simply because they change their minds. However, if the goods are faulty or defective, have been described incorrectly, differ from the sample shown to you or do not function according to their purpose, you can choose between reimbursement, exchange, or repair of the goods.

Desember 2025

Beste Voornemende Matie Student,

HEFFING VAN VERWELKOMINGSPAKKIE-KOSTES OP STUDENTEREKENING 2025

Welkom by jou Pendel Student Gemeenskap by Stellenbosch Universiteit! Aangesien jy nie in 'n US koshuis woonagtig is nie, is jy deel van 'n PSG (Pendel Studente Gemeenskap). Tydens die jaarlikse Verwelkomingsperiode neem gemeenskappe verantwoordelikheid om die eerstejaars op 'n verwelkomende wyse aan Stellenbosch Universiteit bloot te stel.

Aangesien die PSG's nie oor 'n eetsaal beskik waar studente maaltye kan geniet nie, (alhoewel daar reëlins getref word deur sommige PSG's om etes in die oop eetsale te geniet), word daar vir die eerstejaars "verwelkomingspakkies" saamgestel. Dit bestaan gewoonlik uit 'n sekere aantal maaltye, klerasie en soortgelyke items wat eie is aan die betrokke PSG. Tydens registrasie by die PSG op die eerste dag van Verwelkoming (Dinsdag 28ste Januarie 2025) het u die opsie om hierdie verwelkomingspakkies aan te skaf teen 'n vasgestelde bedrag (wat kan wissel van PSG tot PSG). Elke PSG bied ook verskillende opsies aan student (etes en klerasie / slegs etes / slegs klerasie).

Stellenbosch Universiteit maak gebruik van 'n kontantvrye sisteem wat studente in staat stel om die pakkies makliker te verkry. U, of u ouers of voog, gaan dus op die dag 'n erkenning van skuld moet teken sodat die klerasie, voedsel, ens vir die verwelkomingsperiode aan u betrokke beskikbaar gestel kan word. Na registrasie sal die koste dan teen die studenterekening gehef word vir betaling saam met alle ander studentverwante uitgawes.

Neem asseblief kennis dat sodra u die vorm onderteken het, u aanspreeklik sal wees vir die koste van die verkose pakkie, ongeag of u al u etes geneem het en ongeag of u die klerasie nie meer wil hê of dra na die eerste paar dae nie.

Die verkryging van die "verwelkomingspakkies" is nie verpligtend nie, maar ons wil u tog aanmoedig om dit wel op te neem. Vind asseblief aangeheg die vorm vir u voltooiing. U is welkom om dit saam te bring volgende jaar.

Indien u enige vrae het, kontak ons gerus by cscu@sun.ac.za

TOESTEMMING: HEFFING VAN VERWELKOMINGPAKKIE OP STUDENTEREKENING 2026

BESONDERHEDE VAN STUDENT:

NAAM EN VAN:

STUDENTENOMMER:

PSG:

KEUSE VAN VERWELKOMINGPAKKIE (MERK MET 'N X):

Volle pakkie (Klere- en kospakkie) KOSTE: R	SLEGS KOSPAKKIE KOSTE: R	SLEGS KLEREPAKKIE KOSTE: R
R1050,00	R550,00	R500,00

Deur die ondertekening van die vorm, verbind u uself skriftelik tot die volgende:

- Hiermee verleen ek toestemming dat die koste van die verwelkomingpakkie teen my studenterekening gehef mag word.
- Ek verstaan dat ek nie verplig is om die verwelkomingpakkie aan te skaf nie.
- Ek besef dat as ek die vorm teken, ek die kostes moet betaal en dat ek nie gelde terug sal kan ontvang nie¹.

HANDTEKENING VAN STUDENT OF VOOG:

DATUM

.....

.....

¹ Neem asseblief kennis dat ons gewoonlik geen terugbetalings doen net omdat u van plan verander het nie. Indien die goedere foutief of gebrekkig is, verkeerdlik beskryf is, verskil van die monster wat aan u getoon was of nie funksioneer volgens die doel daarvan nie, kan u kies tussen 'n terugbetaling, omruil, of herstel van die goedere.

Merchandise Packages

We have a range of 3 packages to choose from regarding merchandise!

Should you indicate you would like merch on the previous form, simple specify which package and we will assist you accordingly!

PACKAGE 1:

Tshirt

Visor

Water Bottle

Draw String Bag

Phone Card Holder

TOTAL = R500,00



PACKAGE 2:

Tshirt

Visor

Drawstring Bag

TOTAL = 400,00



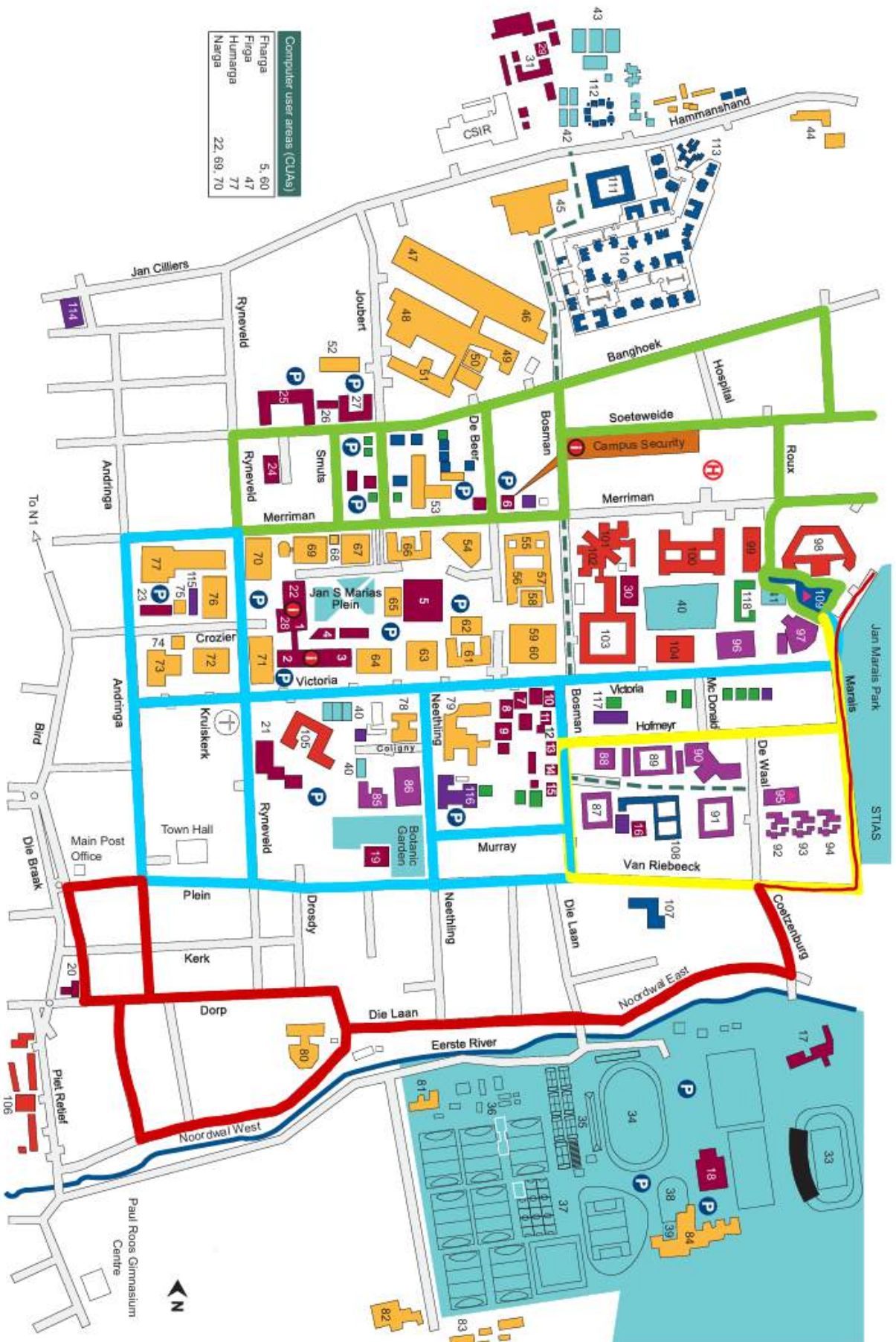
PACKAGE 3:

Tshirt

Phone Card holder

TOTAL = R275,00

STELLENBOSCH CAMPUS MAP



In the meantime...

We are so excited to meet you, Aristeia just couldn't wait! Join our Newcomer WhatsApp group now already for regular updates on the pre-Welcoming program (with the QR-code below)



@aristeacsc



Aristeia CSC



@aristeacsc



@aristeacsc

Important Numbers

EMERGENCY TELEPHONE NUMBERS USBD

(all emergencies)

021-808 4666 / 021-808 2333

MAINTENANCE

021-808 4666

NATWET BUILDING SAFETY OFFICER:

Fawzia Gordon 083 611 0644

NATWET BUILDING A/H CONTACT:

Jonathan Williams: 084 890 2255

AMBULANCE

10 177 / 10 999

STELLENBOSCH HOSPITAL

021-887 0310

MEDIC CLINIC (Private)

021-861 2000 021-881 2094 (emergency 24h unit)

FIRE BRIGADE

021-808 8888 or 021-887 4446

POLICE

10 111/ 021-809 5000/3/4

CAMPUS HEALTH SERVICES

021-808 3496/3494 7 Claassen Street (between Heemstede & Metanoia Residences)

In case of difficulties with an Emergency,

Call 1022 (Only Ambulance/ Fire /Police)

SU 24-Hour Crisis Line Students:

082 557 0880

Metro Rescue Control Room:

021 937 0300 or 10177 (24hrs) (they will contact Wilderness Search & Rescue when needed)