

WELCOME TO | WELKOM BY | WAMKELEKILE KWI



Stellenbosch
UNIVERSITY
IYUNIVESITHI
UNIVERSITEIT

forward together
sonke siya phambili
saam vorentoe

Stellenbosch University International

Est 1993

WELCOME GUIDE 2026



TABLE OF CONTENTS

LETTER FROM OUR DIRECTOR 4

ABOUT STELLENBOSCH UNIVERSITY INTERNATIONAL 5

GLOBAL LEARNING OUTCOMES 8

CO-CURRICULAR ACTIVITIES AT STELLENBOSCH UNIVERSITY 10

GEP 11

SOCIAL IMPACT 13

AMANI 15

MATIE BUDDIES 16

NEW STUDENTS 18

CAMPUS OFFERINGS 20

SPORTS 20

MATIES GYMNASIUM 21

CAMPUS MAP 22

STUDENT COMMUNITIES AT STELLENBOSCH UNIVERSITY (SU) 24

STELLENBOSCH UNIVERSITY INTERNATIONAL CALENDAR 25

VENSTERS 26

TOYOTA WOORDFEES 27

CAPMUS HEALTH SERVICES 28

EMERGENCIES 30

MORE ABOUT STELLENBOSCH 31

BUCKET LIST 34

CAMPUS JARGON 35

SOUTH AFRICANISM 36

CONTACT DIRECTORY 37

IMPORTANT NUMBERS 38

LETTER FROM OUR DIRECTOR



Dear Students,

Welcome to Stellenbosch, your new home away from home. We at the Centre for Global Engagement, which is part of SU International, are looking forward to hosting you at Stellenbosch University and hoping to guide you towards having a transformative student experience.

Our wish for you is to fully integrate into student life at Stellenbosch University and to be successful at your studies. Also, to make new friends, learn a local language, experience Stellenbosch and South Africa, and to take on the opportunity to further explore our neighbouring African countries.

Importantly, our approach is embedded within a global learning framework, and through the activities and programmes we have developed for you, we would like you to achieve certain global learning outcomes.

The outcomes are:

1. students will gain increased knowledge about how global issues affect diverse local contexts.
2. students will critically reflect on their own cultural, social and educational frames of reference to understand how their perspective informs and limits their knowledge.
3. students will demonstrate respect for diversity by adopting pluriversal perspectives on complex issues.
4. students will understand how their actions impact communities locally and globally.
5. students will demonstrate a transformative, post-colonial and values-based approach to creating positive change.
6. students will develop their professional skills and competences in intercultural settings.
7. students will continuously develop and apply their global learning across multiple contexts.

To conclude, travelling is not just an opportunity to see new things, but to grow as a person. But the key to achieving the latter is to be open to new opportunities and to learn to think differently.

SARAH VAN DER WESTHUIZEN

DIRECTOR: CENTRE FOR GLOBAL ENGAGEMENT

ABOUT SUI

MEET THE SERVICES TEAM



The SU International Services Centre is responsible for administrative services and the reception of all visitors. The following services are available to international students:

- International student finances
- Immigration assistance,
- Support for prospective international undergraduates, including assessing their international school qualifications
- Assisting with admissions enquires
- Assistance with accommodation (Also available for Full-degree international students).
- Airport transfers for international students when they arrive on campus for the first time.

ABOUT SUI

MEET THE MOBILITY TEAM



The Unit for Student Mobility at Stellenbosch University International manages exchange programs, study abroad opportunities, as well as summer and winter schools. It facilitates global learning experiences by coordinating partnerships with international institutions, helping students gain academic, cultural, and professional growth. The Unit promotes cross-cultural learning and fosters global perspectives among students.

- Facilitate incoming and outgoing study abroad opportunities for all students
- Academic registration for Semester Exchange students
- Short programmes (summer and winter schools) SKEMA
- American Institute for Foreign Study (AIFS)

ABOUT SUI

MEET THE GLOBAL LEARNING TEAM



The Unit for Global Learning at SU International implements the Global Learning Outcomes by creating interculturally competent and transformative nodes of connection, curricula that develops skills necessary for engaged global citizenship, and opportunities for connection. In the work the unit does with students, it supports global education initiatives and offers programmes that enhance students' academic and cultural experiences both inside and outside the classroom. The unit aims to ensure that students have a transformative and well-rounded student experience during their stay at Stellenbosch University through the following offering:

- Student support and wellness
- Safety and security assistance
- Fostering integration through various projects (Matie Buddies, ISOS & VCE)
- Community engagement initiatives
- Social and cultural excursions
- Co-curricular & experiential learning offerings
- Amani (African Student Board)
- Global Education Programmes (GEP)

GLOBAL LEARNING OUTCOMES



The Global Learning Outcomes are seen in programmes, initiatives and events (both in and out of the classroom) that provides students with the opportunities to actively:

1. Learn how global problems affect different people and places in different ways

Students learn that big issues like climate change, access to education and resources, or migration don't look the same everywhere. These problems affect people differently depending on where they live and their history or culture.

2. Think about their own backgrounds and experiences, and how this shapes their views of the world

Students have experiences that cause them to reflect on their own culture, upbringing, and education to understand how these things influence the way they see the world, and how that might be different from others.

3. Respect different ways of thinking and knowing

Being open to ideas and knowledge from many cultures, including Indigenous wisdom and local community knowledge, not just the perspectives that are most common or powerful globally.

4. Realise how their actions affect others, near and far, in ways they didn't previously envision

Students learn that what they (or their government or political structures) do locally can have effects around the world, and that global events can also affect them. It's about being aware and responsible.



5. Understand more about what it means to create change in a fair, respectful, and meaningful way

This is about working for justice and sustainability, not by “helping” others in a one-sided way, but by working together equally and respectfully. It is also about understanding that there is no one-size fits all approach to change and that the more you know about different people and places, the more inclusive change can be.

6. Build skills to work well with people from different cultures

Students gain hands-on experience and useful skills to collaborate with people from different backgrounds, helping them become both good professionals and thoughtful global citizens.

7. Form new intercultural competences that have an impact on their lives, careers, or engagements with diverse others going forward

Global learning doesn't stop in the classroom. Students are encouraged to keep applying what they've learned in their daily lives, future studies, and jobs.

CO-CURRICULAR ACTIVITIES AT STELLENBOSCH UNIVERSITY

Stellenbosch University offers a wide range of co-curricular programmes. These programmes focus on seven main areas of development: academic leadership, student leadership, personal leadership, social impact, intercultural engagement, sport and wellbeing, and scholarship awards and service recognition.

All co-curricular activities at the University aim to help students build important graduate attributes.

These attributes are:

- An Enquiring Mind
- An Engaged Citizen
- A Dynamic Professional
- A Well-rounded Individual

We believe that these attributes are essential not only for students to succeed during their studies, but also for graduates entering the world of work.

Co-curricular Programming at Stellenbosch University International (SU International)

At SU International, all co-curricular activities are coordinated through the Unit for Global Learning in the Centre for Global Engagement. Each programme is guided by the Global Learning Outcomes (GLOs), which outline the knowledge, skills and attitudes students are encouraged to develop. These outcomes form the foundation of all SU International co-curricular programming and provide a framework for evaluating the success and impact of each activity. Students are expected to achieve some, if not all, of these outcomes through their participation.

SU International offers a wide range of co-curricular and experiential learning opportunities that promote global engagement, intercultural understanding, leadership, and personal development. These opportunities can be grouped into the following categories:

1. Student Leadership

- Matie Buddy Programme – For full-degree SU students
- Cross-Cultural Intelligence Training – For students registered as Matie Buddies
- AMANI (African Students Board) – For African students registered at SU

2. Community Engagement and Volunteering

- Volunteering and Community Engagement – Open to all SU students

3. Cultural and Social Activities

- International Student Organisation of Stellenbosch (ISOS) – Open to all students
- AMANI (African Students Board) – For African students registered at SU
- International Food Evening – Open to all SU students

4. Academic and Professional Development

- Global Citizenship Short Course – Open to all SU students
- Teamwork Programme – Open to all SU students
- International Conference for Undergraduate Research (ICUR) – For students who have completed an honours thesis project
- International Network of Universities: Online Global Citizenship Programme – For full-degree SU students
- EUTOPIA Certificate for Internationalisation – Open to all students
- Cross-Cultural Intelligence Training – For students registered as Matie Buddies

GEP



The Global Education Programmes (GEP) are Undergraduate (UG) formal curriculum modules. The modules are designed to complement SU's mainstream course offerings by providing international students with specifically designed courses to harness student experience, outside of normal departmental offerings. To ensure that international students have a transformative experience with the intent to contribute to a global student learning experience. GEP modules are transdisciplinary and experiential, aimed at both full degree and semester exchange international students.

GEP Modules currently on offer:

Languages:

1. Afrikaans for Beginner (UG):

This is a fun-filled course offering you a linguistic and cultural taste of Afrikaans as a language in a wider cultural context, aimed at international students with no knowledge of Afrikaans.

2. Afrikaans Language and Culture for Dutch and Belgian Students (UG):

This is a tailor-made course specifically for Dutch mother-tongue speakers from the Netherlands and Belgium. The focus in this course is on much more than linguistics and the acquisition of Afrikaans – it also encourages and stimulates a critical awareness of the complexity of the Afrikaans culture.

3. isiXhosa Language and Culture (UG):

The acquisition of basic isiXhosa language proficiency with a focus on and awareness of the isiXhosa culture.

4. Modern and Foreign Languages for Beginners (French, Spanish, German, Chinese) (UG):

Students who complete the course/s will be able to understand, speak, read and (to a lesser extent) write in the basic foreign language in everyday situations and have a basic knowledge of contemporary foreign society. The modules are aimed at students with no knowledge of these languages.

Arts and Social Science:

5. **Digital Photography and Visual Studies (UG):**

This module will introduce students to the medium of photography with a focus on the environment it functions within the (South) African context, as well as a focus on modern digital photography and the technical working knowledge of a camera. Students will be required to question and analyse the various narratives a photographic series is representing and how the images are being framed through a socio-cultural and historical lens.

Social Studies:

6. **South African Pop Culture and Identity (UG):**

This module draws from different disciplines - history, hip-hop and other popular music studies, post-colonial studies, sociology, and more - to give students the necessary context(s) to not only better understand contemporary South African society, but to also gain knowledge about people, popular culture and identities against the backdrop of major historical shifts.

7. **Politics and Cultural Change in Contemporary South Africa (UG):**

The purpose of this module is to introduce students to political and cultural changes that are taking place in South Africa. This will be done by brainstorming several pertinent ideas (drawn from political studies, sociology, and anthropology) and subsequently applying these ideas to several themes.

8. **An Overview of South African History (UG):**

This course provides a general overview of South Africa's history with the aim of helping international students better understand the complex dynamics of South African society today.

Other GEP Courses:

9. **Understanding HIV in South Africa (UG):**

This module is offered by the HIV Portfolio within The Equality Unit (EqU). This module aims to nurture and develop the necessary knowledge, skills, and attitudes in students as leaders and future professionals to manage HIV prevention and care in the workplace, both locally and abroad. This module will aim to develop a global understanding of HIV and AIDS through a health and social justice perspective.

10. **Sustainable Agriculture & Community Gardening (UG):**

The academic and service components are complemented with field trips and practical work to allow for deeper engagements with global issues as they present themselves in the South African context, through understanding concepts of sustainable agriculture, relating to regenerative farming, crop production, starting and maintaining community gardens.

11. **Global Service Learning (UG):** The programme is situated at the intersection between (international) education, education for sustainable development and global citizenship education. The programme enables participants to develop their global citizenship through community engagement and to broaden their understanding of South African history and contemporary life.

Below is a Link to download the GEP booklet that includes credits per module and a tentative timetable:

[Find Courses | Semester Students | Stellenbosch University](#)

Contact details for GEP modules:

msm@sun.ac.za

SOCIAL IMPACT

At SU International, you can get involved in exciting projects that make a real difference! We work closely with schools and community organisations, and our initiatives give you the chance to contribute to meaningful educational work while gaining valuable experience.

Key programmes include:

1. **Global Service Learning (GSL):** an academic credit-bearing GEP course. The course comprises of 60 in-class hours and 50 hours of community engagement. The course is presented in collaboration with Boschendal Estate, Excelsior creche, Nondzame, Pniel, Simondium and PC Petersen Primary. It enables students to develop their global citizenship through community engagement and to broaden their understanding of SA history and contemporary life.
2. **Volunteering and Community Engagement (VCE):** programme gives local and international students the chance to get involved in structured community service projects. The goal is to help you connect, learn, and contribute through meaningful experiences. It focuses on after-school education with High school learners and Early Childhood Development.
3. You'll also have the opportunity to connect with SU's **Social Impact** Office and discover other community organisations in Stellenbosch where you can volunteer and have a positive impact.



INTERNATIONAL STUDENT ORGANISATION OF STELLENBOSCH (ISOS)

Looking to meet new people and make the most of your time at SU? The ISOS programme brings international students together through social, cultural, and wellness events designed to help you feel at home.

From exciting excursions around the Western Cape to on-campus activities, ISOS creates opportunities for you to explore South Africa's rich diversity, build friendships, and fully experience student life at Stellenbosch University.

Activities:

- cultural food tours
- wine tasting
- hikes
- summer concerts
- trips to Robben Island
- cape point tours
- cultural and sporting events
- west coast tours
- surfing lessons
- garden route tours



AMANI

Amani is a student-led organisation that represents all African students at Stellenbosch University who come from other countries on our shared continent. It acts as a bridge between International students with other African heritage and backgrounds, and SU International, offering support through mentorship, workshops, and peer-led programmes that help you settle into university life both socially and academically.

Working closely with other student bodies such as Student Representative Council (SRC), Amani also ensures all African voices and perspectives are heard in broader student matters.

Amani hosts vibrant events like the African Gala, which celebrates African culture, music, and traditions. It also leads Africanisation projects that highlight and uplifts all African identity within the academic space.

Whether you're looking to connect, celebrate your heritage, or get involved in shaping campus life—Amani is here to help you thrive.



MATIE BUDDIES

Starting university in a new country can be overwhelming—that's where the Matie Buddy Programme comes in!

Run by SU International, this cultural buddy system pairs international students with local "Matie" students to help you feel at home from day one.

Matie Buddies are here to:

- Welcome and orientate international students
- Help you settle into campus life
- Build meaningful friendships and support networks
- Promote cross-cultural exchange and shared experiences

Whether it's your first day on campus or your first weekend adventure in the Western Cape, your Matie Buddy is there to support you every step of the way.



MESSAGE FROM MATIE BUDDIES



Welcome to Stellenbosch, Future Maties!

We're so excited to welcome you to this beautiful corner of South Africa—and even more excited to be your Matie Buddies! Whether you're feeling pumped, a little nervous, or somewhere in between, just know: you're not alone. We're here to support you every step of the way.

Stellenbosch is more than just a university town—it's a vibrant community full of rich culture, history, stunning scenery, and endless opportunities. From scenic vineyards to charming streets, and warm, welcoming people—you're about to experience something truly special.

Got questions? Feeling a bit lost? We've got you! We're just a message away and always happy to help.

“

**Your Matie adventure starts now—
and it's going to be unforgettable.
Welkom. Welcome. Wamkelekile.**

– Your Matie Buddies

”

DEAR NEW STUDENTS

Welcome to Stellenbosch University and to SU RASN – a vibrant, student-led community where diversity is celebrated, voices are uplifted, and resilience is our shared strength.

SU RASN stands for solidarity, empowerment, and belonging. We are a refugee-led society committed to creating a safe and inclusive space for students from all backgrounds, especially those who have experienced displacement. Whether you're here to connect, advocate, learn, or lead, SU RASN is your home away from home.

What we offer:

- A supportive network of peers and allies
- Cultural events and storytelling platforms
- Advocacy for refugee rights and inclusion
- Opportunities for leadership and collaboration

We believe that every story matters, and every student has the power to shape a more compassionate campus and world. Join us in building bridges, challenging stereotypes, and celebrating the richness of our shared humanity.

Welcome to SU RASN. Welcome to a community that sees you, hears you, and stands with you.



Ornela Meri
Chairperson

Prisca Mukendi
Treasurer

Kevine Tshiabuila
Events and Social Media Manager

Audrey Mbala
Secretary

INTERNATIONAL FOOD EVENING

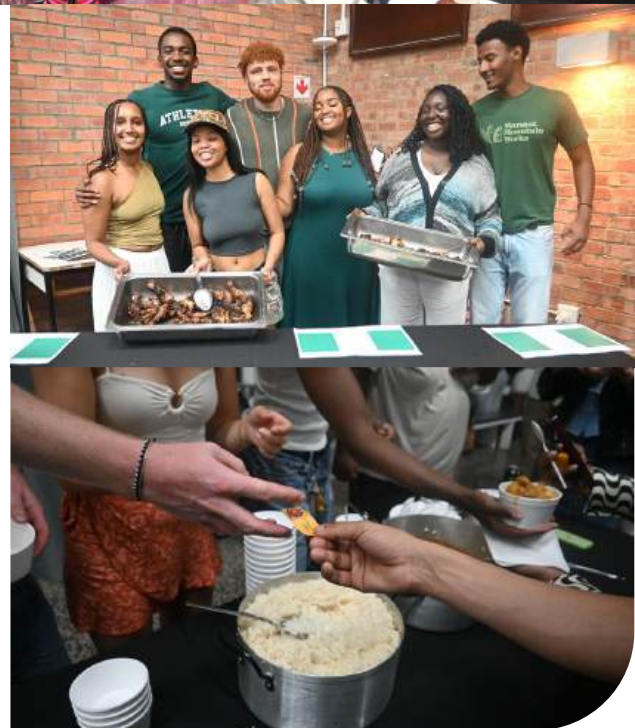


Twice a year, every year

One of the most anticipated cultural gatherings on campus is the International Food Evening.

Hosted by the SU International Office, this event brings together students from across the world to celebrate diversity through flavour. Cultural societies and student groups come together to prepare signature dishes from cultures across the world, turning campus into a vibrant global market of colour, aroma, and music.

It's an unforgettable evening where you can taste your way around the world, learn about different traditions, and connect with people you may never have met otherwise. A perfect blend of community, culture, and good food; and one of the highlights of the Stellenbosch University calendar.



CAMPUS OFFERINGS

Culture

Stellenbosch University is more than just academics— the campus is a vibrant hub of culture and creativity!

Throughout the year, students have plenty of opportunities to showcase their talents and express their passions through a wide range of cultural activities.

From singing and drama to art, debating, and themed culture evenings—there's something for everyone.

Main Events:

SU Acapella: The Stellenbosch University Acapella Competition (SUAC) is a highlight for many in second semester of the year.

Palesa Festival: Lights Camera Action! Explore and unlock talents with the stage as your playground This is an annual theatre production that is a great opportunity for students to step out of their comfort zone.



@matiesport on instagram to ask about their **Matie Buddies**

SPORTS

Whether you're a seasoned athlete or just looking for some fun and fitness, Stellenbosch University offers a wide range of sports to suit every interest and skill level.

Some of the popular options include:



Rugby



Netball



Football



Hockey



Table Tennis

Throughout the year, students get the chance to compete in friendly matches and tournaments, often within their residences or student communities. It's a great way to stay active, meet new people, and show your Matie spirit!



WELCOME TO MATIES GYMNASIUM

Maties Gymnasium is centrally located at the Coetzenburg Sport Complex, providing students with convenient access to the University's premier sporting facilities and essential services, including Maties Sport codes, Campus Health, Physiotherapy, the Sport Science Faculty, and Biokinetics.

This unique facility caters to everyone, from beginners to high-performance athletes, featuring state of the art equipment and specialised training apparatus for universal access. Students train alongside Maties rugby players, Olympians, and top student-athletes in an inspiring and motivating environment.

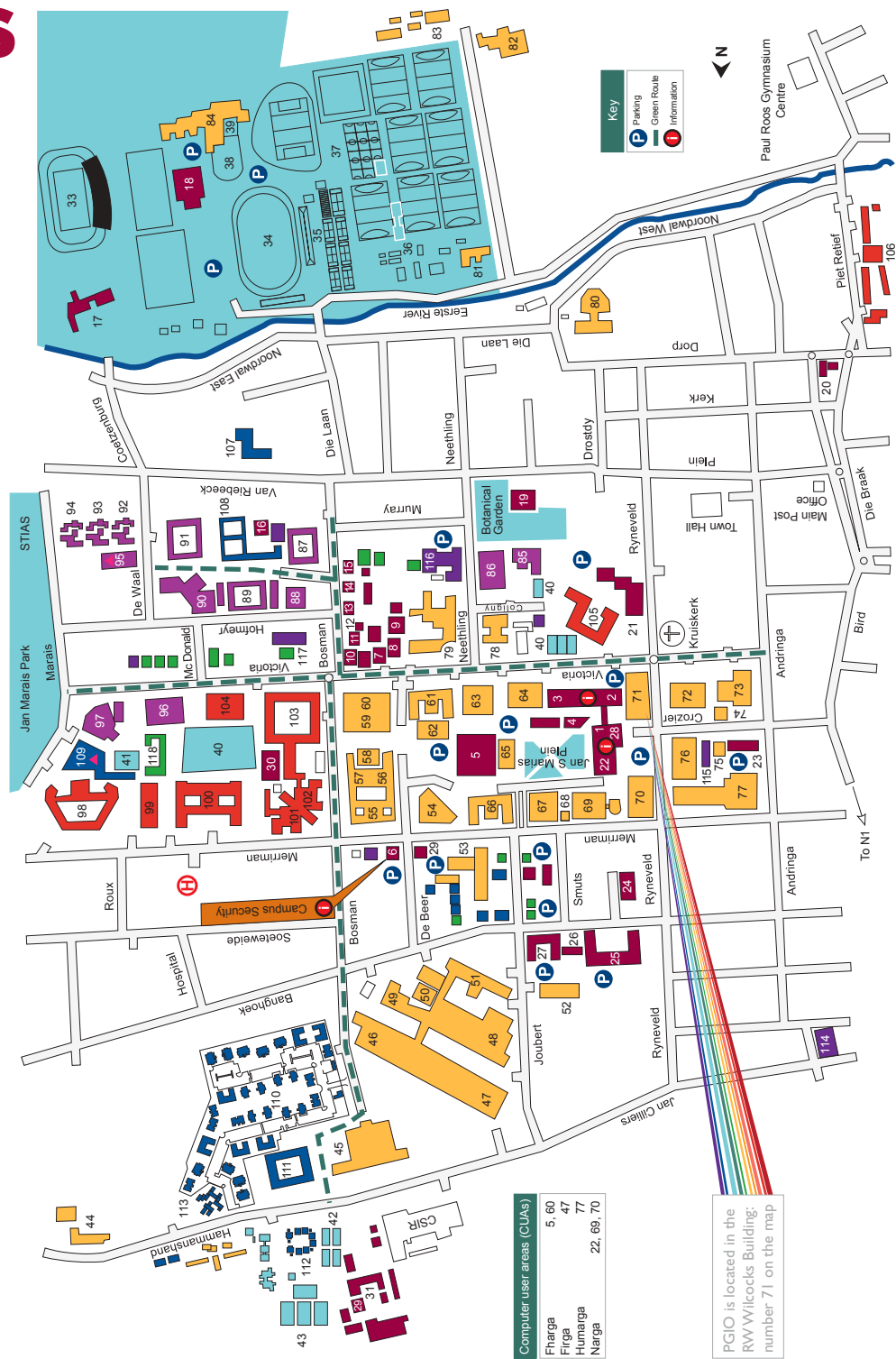
Friendly staff, expert personal trainers, and experienced group exercise instructors are available to help members achieve their fitness goals. Whether students need to unwind after lectures, decompress following exams, or elevate their training routine, the gymnasium provides the ideal support.

Maties Gymnasium welcomes all students, university staff, and the broader community, with membership options available to accommodate individual requirements and schedules.

Address: Coetzenburg Sport Campus,
Coetzenburg Rd, Stellenbosch, 7600



CAMPUS MAP



STELLENBOSCH CAMPUS MAP

SUPPORT SERVICES

- 1 Administration, Block A
- 2 Administration, Block B
- 3 Administration, Block C
- 4 JS Gericke Library
- 5 Neelsie Student Centre
- 6 Campus Security
- 7 Centre for Student Recruitment
- 8 Centre for Student Counselling and Development: Reception (CSCD)
- 9 CSCD: Office for Students with Special Learning Needs (Disabilities); Den Bosch
- 10 CSCD: Unit for Psychotherapeutic and Support Services
- 11 Centre for Teaching and Learning
- 12-14 Division for Student Affairs
- 15 Language Centre: Reading Lab and Language Enrichment Courses
- 16 Campus Health Services
- 17 Maties Sport
- 18 Coetzenburg Centre
- 19 Old Conservatoire
- 20 SU Art Gallery
- 21 Eben Dönges Centre (Sasol Art Museum)
- 22 Centre for Learning Technology
- 23 Language Centre (Writing Lab)
- 24 WAT, 115 Banghoek Road
- 25 Matie Community Services, Lückhoff School
- 26 SU Vehicle Fleet
- 27 Legal Aid Clinic
- 28 IT Hub (Help Centre)
- 29 TAS-IT
- 30 Purchasing and Provision Services
- 31 Facilities Management
- 32 Information Technology

SPORTS FACILITIES

- 33 Danie Craven Stadium
- 34 Coetzenburg Athletics Stadium
- 35 Coetzenburg Tennis Courts
- 36 PSO Club House and Hockey Fields
- 37 Netball Courts
- 38 Swimming Pool
- 39 SU Gymnasium
- 40 Tennis Courts (Residences)
- 41 Old Mutual Sports Centre (squash courts)
- 42 Tennis Courts
- 43 Heidehof Rugby Fields

ACADEMIC BUILDINGS

- 44 Food Science
- 45 PO Sauer
- 46 Electrical/Electronic Engineering
- 47 Civil Engineering
- 48 Mechanical/Mechatronic/Industrial Engineering
- 49 Process Engineering
- 50 Knowledge Centre
- 51 Engineering, General
- 52 Africa Centre for HIV and AIDS Management
- 53 JC Smuts – Biological Sciences
- 54 De Beers – Chemistry
- 55 Mike de Vries
- 56 Chemistry – first-years
- 57 Inorganic Chemistry
- 58 CGW Schumann
- 59 Van der Stier
- 60 Accounting and Statistics
- 61 JS Marais
- 62 Polymer Science
- 63 Visual Arts
- 64 JH Neethling
- 65 AI Perold
- 66 Merensky
- 67 Mathematical Sciences and Industrial Psychology

- 68 Nursery
- 69 Natural Sciences
- 70 Chamber of Mines
- 71 RW Wilcocks
- 72 Old Main Building
- 73 HB Thom Theatre
- 74 CL Marais Library
- 75 Journalism
- 76 GG Cillie
- 77 Arts and Social Sciences
- 78 Lombardi
- 79 Konservatorium (UniversityChoir)
- 80 Theological Seminary
- 81 Paul van der Bijl Laboratories
- 82 Agronomy
- 83 Welgevallen Experimental Farm
- 84 Sport Science

WOMEN'S RESIDENCES

- 85 Monica
- 86 Harmonie
- 87 Heemstede
- 88 Huizen Bosch
- 89 Lydia
- 90 Minerva
- 91 Nerina
- 92 Erica
- 93 Nemesia
- 94 Serruria
- 95 Tinie Louw Dining Hall: ▲ amaMaties hub
- 96 Sonop (Huis van Niekerk)
- 97 Irene

MEN'S RESIDENCES

- 98 Eendrag
- 99 Helshoogte
- 100 Simonsberg
- 101 Huis Visser
- 102 Huis Marais
- 103 Dagbreek
- 104 Majuba
- 105 Wilgenhof
- 106 Helderberg

MEN'S AND WOMEN'S RESIDENCES

- 107 Huis Neethling
- 108 Metanoia
- 109 Russel Botman House: ▲ Wimbledon hub
- 110 Academia
- 111 Concordia
- 112 Goldfields
- 113 Huis McDonald

UNIVERSITY FLATS AND HOUSES

- 114 Lobelia
- 115 Crozierhof
- 116 Huis de Villiers
- 117 Waldenhof

LISTEN, LIVE AND LEARN

- 118 LLL village
- LLLhouses

CLUSTER HUBS

- ▲ amaMaties 95
- ▲ Wimbledon 108

Faculties (in colour) and departments

- Accounting 59
- African Languages 77
- Afrikaans en Nederlands 77
- Agricultural Economics 61

AGRISCIENCES 44, 45, 53, 55, 61, 64, 78, 81–83

- Agronomy 82
- Ancient Studies 77
- Animal Sciences 55
- Applied Mathematics 51

ARTS AND SOCIAL SCIENCES 63, 70, 71, 73, 75, 77, 79

- Biochemistry 53
- Business Management 58
- Botany and Zoology 69
- Chemistry and Polymer Science 54–57, 62
- Computer Science (Math. Sc.) 51
- Conservation Ecology and Entomology 61
- Drama 73
- Earth Sciences 70

ECONOMIC AND MANAGEMENT SCIENCES 52, 58–60, 67

EDUCATION 76, 84

ENGINEERING 47–51

- English 77
- Food Science 44
- Forest and Wood Sciences 45
- General Linguistics 77
- Genetics 53
- Geography and Environmental Studies 70
- History 71
- Horticulture 78
- Industrial Psychology 67
- Information Science 77
- Institute for Wine Biotechnology 64
- Institute for Plantbiotechnology 69
- Journalism 75

LAW 72

- Mathematics (Math. Sc.) 67
- Microbiology 53
- Modern Foreign Languages 77
- Music 79
- Philosophy 77
- Physics 66
- Physiological Sciences 55
- Plant Pathology 78
- Political Science 77
- Psychology 71
- Public Development Management 59

SCIENCE 51, 53–57, 59, 62, 65, 66, 67, 70

- Social Work 77
- Sociology and Social Anthropology 77
- Soil Science 78
- Sport Science 84
- Statistics and Actuarial Science 60

THEOLOGY 80

- Visual Arts 63
- Viticulture and Oenology 64

P Parking

STUDENT COMMUNITIES AT STELLENBOSCH UNIVERSITY (SU)

SU utilises Student Communities as the organisational model to ensure welcoming, orientation and integration into the Campus-Life Ecosystem for all students who attend our institution. These communities are designed to create a sense of belonging, ease access to support services, facilitate social integration and expose students to a vast collection of developmental opportunities for personal and professional growth.



The administration of these communities lies within the Centre for Student Life and Learning and managed by the Commuter Student Communities (CSCU) and the Residential Student Communities Units.

Students at SU will be placed into an SU Residence community if their application for one is successful. If they choose not to apply for an SU residence, or decide to reside in private accommodation, students are placed into a commuter student community (CSCs). It is then their responsibility to arrange private accommodation. These communities are arranged into clusters.

A cluster is an organisational structure that groups residential and commuter student communities together in a specific geographic area. Clusters ensure that both residential and commuter students have access to shared facilities, such as open dining halls and hubs where relevant.

It is the primary belief of the Centre for Student Life and Learning that students' learning and living environments should be integrated and should not function separately. The social dimension of community life in residence, CSCs and the cluster is harnessed to support the SU's academic mission. In doing so, one of the University's objectives is pursued, namely to provide students with a university experience in which the living spaces are an extension of academic life in the faculties; to establish a university environment that would create a well-rounded and transformative educational experience for students, in line with the Vision 2040 and Strategic Framework 2019-2024.

Our aim is building a student culture that promotes student success, a culture in which students not only have pleasant

social experiences, but are also serious about being effective role players within and beyond South African borders. In line with SU's institutional objectives, the residences and CSCs, as student communities, are encouraged to start applying their newly acquired knowledge now already, both in their communities as well as beyond, in order to make a difference.

SU's communities play a significant role in the integration and support of newcomer students on campus, particularly by means of mentor groups. Mentors are senior students that are appointed to support newcomer students with adjusting to university life and are done so per community. Further to this your community will offer you opportunities for social integration, a place to play various sports, engage in arts and culture events, develop your core skills and the SU Graduate Attributes.

For any queries related to SU Residential Communities, please contact csl@sun.ac.za

For any queries related to SU Commuter Student Communities, please contact cscu@sun.ac.za

SUI CALENDAR

January

- New Year's Day
- Institutional Welcome & Welcoming Programme
- Residences open
- Academic administration & registration support
- African Independence Days: Sudan, Cameroon

February

- Vensters
- First Semester Starts
- Varsity Cup Starts
- African Independence Days: Gambia

March

- SIAN
- International Food Evening
- SU Open Day
- Human Rights Day
- Graduation
- African Independence Days: Ghana, Mauritius, Tunisia, Namibia

April

- Good Friday
- Family Day
- Freedom Day
- African Independence Days: Senegal, Zimbabwe, Sierra Leone, Togo

May

- International Workers' Day
- First Semester examinations start
- African Independence Days: Eritrea

June

- Mid-Year recess
- Youth Day
- African Independence Days: DR Congo, Madagascar, Djibouti, Seychelles

July

- Start of Second Semester
- 2nd Semester Welcoming
- African Independence Days: Somalia, Burundi, Rwanda, South Sudan, São Tomé & Príncipe

August

- SU Acapella
- Women's Day
- Maties Sport varsity leagues
- African Independence Days: Niger, Burkina Faso, Côte d'Ivoire, Chad, Congo-Brazzaville, Gabon

September

- Mid Semester 2 Recess
- Toyota SU Woordfees festival
- Heritage Day
- International Food Evening
- African Independence Days: Eswatini, Guinea-Bissau

October

- Final term assessments
- African Gala
- African Independence Days: Nigeria, Lesotho, Equatorial Guinea, Zambia

November

- Final examinations
- African Independence Days: Angola

December

- Residences close
- University recess
- Day of Reconciliation
- Christmas Day
- Boxing Day
- African Independence Days: Tanzania, Kenya, Libya

VENSTERS

BY SECOND WEEK
IN FEBRUARY
ANNUALLY

One of the biggest events on campus every year is Vensters.

At the end of our Institutional Welcoming, SU Communities on campus partner up with each other for an event no one will forget. Each partnership gets the chance to script a mini show, consisting of dialogue and dances, around a specific theme or cause. It's an amazing opportunity to make friends and have a laugh.



TOYOTA WOORDFEES

One of Stellenbosch's most iconic celebrations is the Toyota Woordfees.

For a full week the town transforms into a vibrant cultural playground, where artists, writers, musicians, and audiences come together to honour creativity in all its forms. Venues across campus and the broader Stellenbosch area buzz with theatre productions, book launches, live music, art exhibitions, film, and food stalls that keep the festive energy alive.

It's a unique opportunity to experience South African artistry up close; to listen, watch, taste, and be moved. A festival that brings the community together and leaves you inspired long after the final curtain falls.



CAMPUS HEALTH SERVICE

Campus Health Service offers comprehensive and confidential health care to all SU students and staff. Their focus is on delivering targeted support that spans from everyday medical needs to specialised wellness initiatives.

Key Services Include:

- Primary healthcare: Managing common illnesses and chronic conditions.
- Specialised care: Confidential assistance with mental health and sexual health concerns.
- Sport and exercise medicine: Consultations for injury prevention, recovery, and performance enhancement.
- Wellness & education: Providing professional medical advice and health education programs.

Contact Details (Monday to Friday):

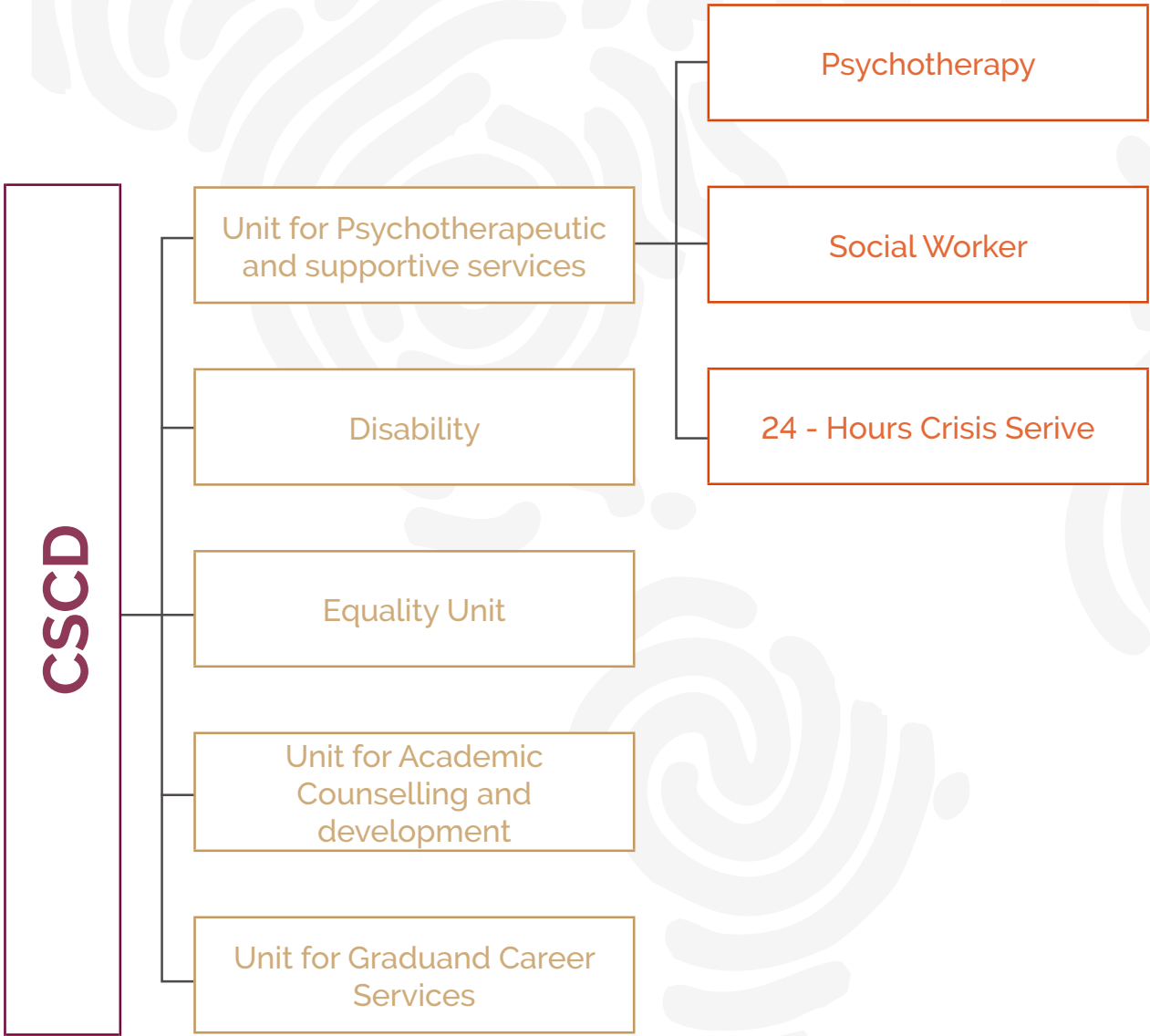
7 Claassen Street, Stellenbosch

08:00 – 17:00

+27 21 808 3494 / +27 21 808 3496

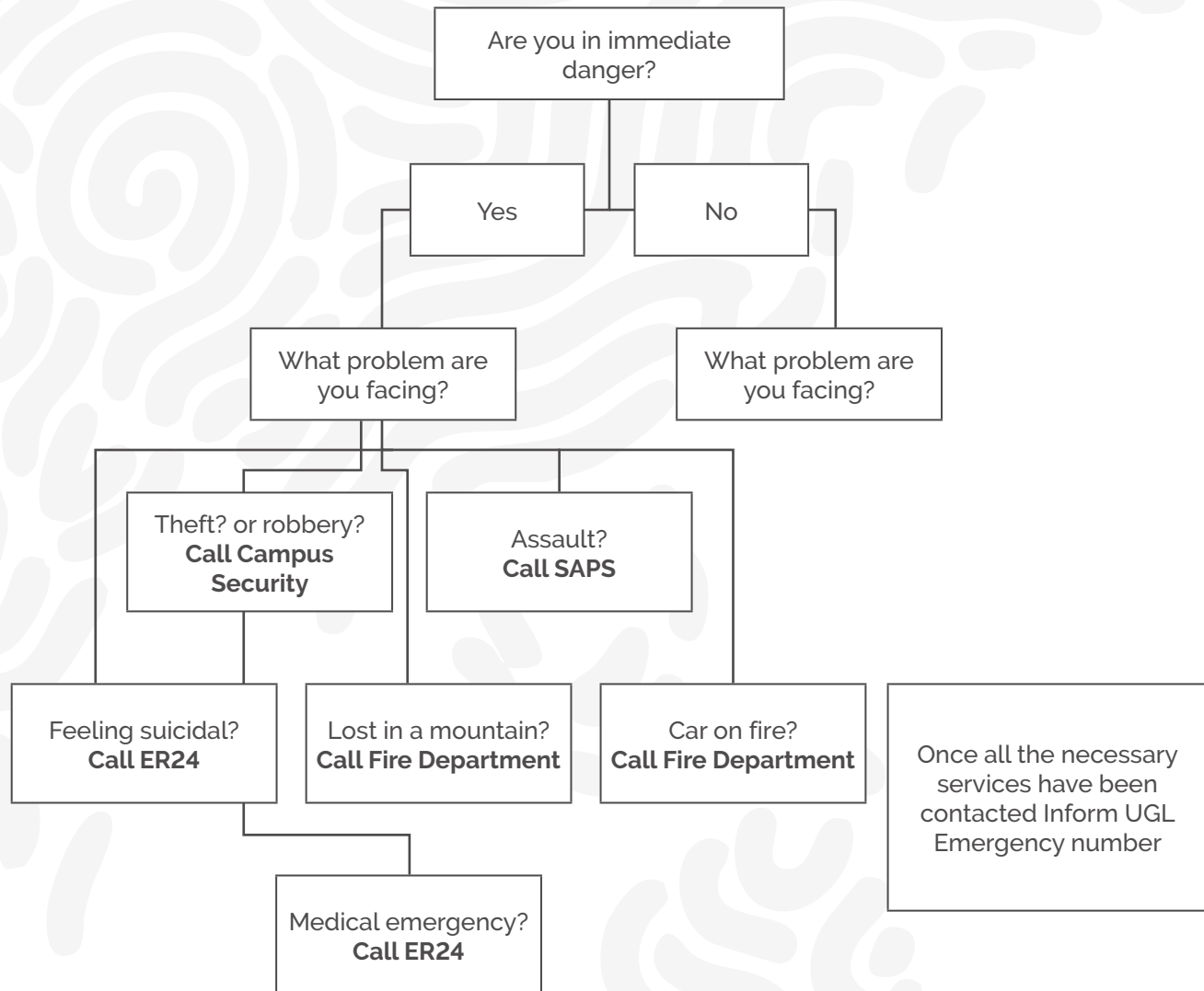


HELPFUL CAMPUS SERVICES





EMERGENCIES



MORE ABOUT - STELLENBOSCH

History:

Founded in 1679 by Dutch Governor Simon van der Stel, is South Africa's second-oldest town and one of the most historically significant in the Cape region. Established as a strategic settlement for farming and wine production, it quickly became a cultural and economic hub. Its history is marked by its role in the early days of Dutch colonialism, the establishment of Stellenbosch University in 1918, and the lasting impact of apartheid. Despite its colonial and apartheid legacy, Stellenbosch has evolved into a diverse and cosmopolitan town, blending old- world charm with modern academic and cultural vibrancy.

Source: https://stellenbosch.gov.za/about-the-city/?utm_source=chatgpt.com

Culture:

Stellenbosch is a rich tapestry of history, arts, and academia. The town is renowned for its well-preserved Cape Dutch architecture, which is a reflection of its colonial past, as well as its active contemporary cultural scene. The presence of Stellenbosch University infuses the town with youthful energy and intellectual activity, while the local arts scene thrives with numerous galleries, music festivals, and theaters. The influence of Afrikaans and English cultures is evident, and Stellenbosch also celebrates its diverse food, wine, and music heritage, rooted in a combination of Dutch, Khoisan, Malay, and African traditions.

People:

The people of Stellenbosch reflect a broad spectrum of South Africa's diverse population. While the town's historical roots are primarily Dutch and Afrikaans-speaking, Stellenbosch today is a melting pot of cultures, with a growing number of English speakers, students, international residents, and African communities. The town is home to the academically inclined, given the presence of Stellenbosch University, yet it also retains a close-knit, small-town atmosphere.

The local population is deeply proud of their heritage, particularly in the wine industry, and many still work in agriculture, viticulture, or the arts, contributing to the town's cultural fabric and economy.

Landscape and Nature:

Stellenbosch is renowned for its breathtaking natural beauty, set against the backdrop of the Simonsberg, Jonkershoek, and Helderberg mountains. The region's Mediterranean climate, with warm summers and cool winters, creates the perfect conditions for vineyards and orchards.

Rolling hills, lush valleys, and expansive vineyards make the area an idyllic retreat, while the nearby Jonkershoek Nature Reserve offers hiking, biking, and wildlife viewing opportunities. The town's oak-lined streets and proximity to the Cape Winelands further enhance its scenic allure, making it a haven for outdoor enthusiasts and nature lovers.



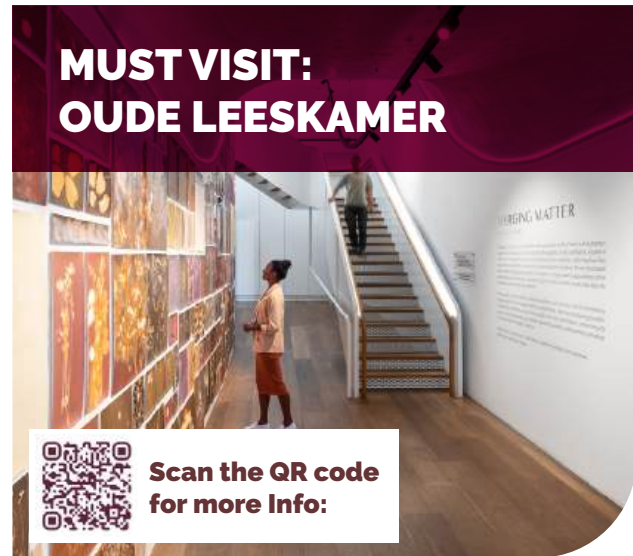
Babylonstoren's magnificent 5-hectare Garden of Diversity, modelled on Cape Town's Company's Garden, serves as the farm's stunning centrepiece with over three kilometres of walking paths celebrating centuries of Cape gardening traditions. This extraordinary destination seamlessly blends history, gastronomy, and craftsmanship through multiple unique experiences.

Babel restaurant occupies the original cowshed, serving seasonal farm-to-table cuisine, while the modern wine tasting centre offers breathtaking mountain views.

Soetmelksvlei provides a fascinating living museum experience where visitors interact with 19th-century artisans practising traditional crafts.

The French-built greenhouse conservatory houses casual dining, while the exotic Spice Garden celebrates the historical spice trade.

Additional attractions include The Story of Wine experience, artisan gelato made from water buffalo milk, a comprehensive Farm Shop, coffee roastery, and specialized spaces like the Tuinwinkel garden centre and Scented Room featuring natural skincare products crafted on-site.



Located on the corner of Dorp and Drostdy Streets in Stellenbosch, the Oude Leeskamer occupies a historic building dating back to 1815.

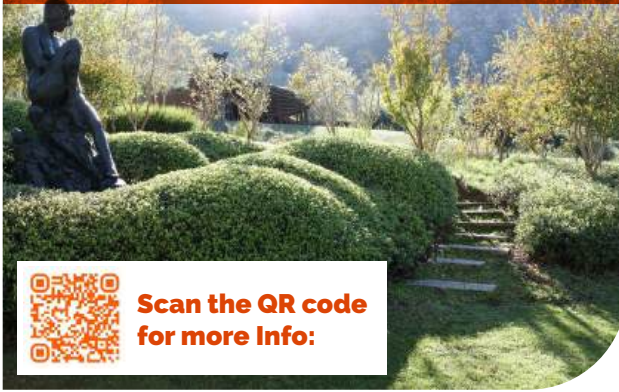
This building has served many roles throughout its history: magistrate's office, church annex, theological seminary annex, reading clubs, Union Debating Society, private residence, guesthouse, and architectural offices. Most notably, it was here that the decision was made to establish schools in Stellenbosch—a decision that eventually led to the founding of Stellenbosch University.

In 2017, the Jannie Mouton Foundation acquired and restored the building, creating five distinct spaces:

- Jannie's Leeskamer
- Art gallery
- Writer's apartment
- De Eetkamer Restaurant
- Foundation offices

The Oude Leeskamer serves as a leading heritage asset that preserves historical value while functioning as a living space celebrating South Africa's diverse arts and culture.

MUST VISIT: **The Dylan Lewis Sculpture Garden**



**Scan the QR code
for more Info:**

Born in Johannesburg in 1964, Dylan Lewis evolved from painter to internationally acclaimed sculptor, initially focusing on large predators like lions, cheetahs, and leopards before exploring the human form through his provocative "forbidden forms" series.

In 2017, he opened the Dylan Lewis Sculpture Garden in Stellenbosch, a breathtaking seven-hectare indigenous fynbos landscape featuring over 60 bronze sculptures along 4km of winding paths. This full-scale visual experience, developed over eight years, showcases his exploration of "wildness" through dynamic human forms, cats, birds, and mythological creatures set against carefully sculpted red hillsides.

Located at the base of Stellenbosch mountains with expansive vineyard views, the garden offers tranquil groves, hidden paths, and secret nooks where each sculpture stands powerfully against its thoughtfully curated backdrop. Visits require reservations and are available Tuesday through Saturday by appointment only.

MUST VISIT: **The Spice Route**



**Scan the QR code
for more Info:**

The Spice Route Destination offers an exceptional Cape Winelands experience, catering to diverse tastes and preferences. Dining options include La Grapperia Pizza & Bistro for casual European-style family meals and Jewell's for authentic South African cuisine, featuring local ingredients and breathtaking views.

Tasting enthusiasts can explore Spice Route Wines, sample expertly cured charcuterie at Jewell's, enjoy premium brews at CBC Brewery, savour handcrafted chocolates at Beyers Chocolate Tasting Room, and discover local gins at Wilderer's.

The curated Spice Route Passport provides a comprehensive two-hour tasting journey featuring six wines, six charcuterie samples, four beers, Fynbos gin, and chocolate selections. Beyond culinary delights, visitors can enjoy mountain biking on scenic fixed trails through the winelands or unwind with spa treatments at Beauty is Life Spa, making it a complete destination for relaxation and adventure.

BUCKET LIST

Dive into this epic bucket list, create unforgettable memories, and have a blast on while visiting us at SU!

- ☐ Watch an SU Choir performance
- ☐ Hike Coetzenburg
- ☐ Visit Route 44 Market
- ☐ Get your student card
- ☐ Attend a Varsity Cup game
- ☐ Join a student society
- ☐ Find Pokkel in the Matie Shop
- ☐ Attend an International Food Evening
- ☐ Snap a shot with your Matie Buddy and tag @su_globally



CAMPUS JARGON

AMANI:	Amani
BIB:	The Stellenbosch University Library
FHARGA:	Computer facilities for Economic and management Sciences students. (At the top of the neelsie)
FIRGA:	Computer Centre for Engineering Faculty (Engineering building)
HUMARGA:	Computer Centre for BA and Education faculty students(Third floor BA)
NARGA:	Computer Centre for Science and AgriScience Faculties (Admin A)
HK/HC:	House Committee
Klein Saterdag:	Wednesdays, celebrating that you've made it half-way through the week!
Neelsie:	The Student Centre, with various food and fast food outlets, catering for a wide variety of tastes ranging from full homestyle meals to light meals and takeaways. You will also find a number of coffee shops, adventure and travel agencies, health and beauty shops, bookstores, clothing boutiques, a convenience store, plenty of gift shops, our very own PULP Society Cinema and a number of academic and business services. There is also a photocopy room (Maties Copy Shop) where you can use your student card to make photocopies.
Prim:	"Prim" is short for Primaria or Primarius. This person is the head leader of the House Committee.
Rooiplein:	The red brick and grass area outside the Neelsie. Built on top of the University Library.
Second Opp:	Short for "Second Opportunity". Most modules or faculties offer a second opportunity exam for students
SUNLearn:	A University website where you receive important information from your lecturer regarding the module. It's very important that you check SUNLearn every day as your lecturer will upload slides, notes and important notices.
Vensters:	Each Connect Partnership Choreographs and puts together a skit with their newcomers. The skit is showcased, anyone is welcome to watch. The aim of the skit is to raise awareness for social impact.

SOUTH AFRICANISMS

Lekker:	Nice, good, enjoyable. "The event was lekker!"
Aweh/Awe:	Friendly greeting or acknowledgement. "Aweh bru!"
Joh/Yho :	Expression of surprise or disbelief. "Yoh, that test was tough."
Eish:	Frustration, sympathy, or disbelief. "Eish, that's rough."
Sharp/Shap/ Sharp-sharp:	"All good" or "goodbye." "Okay shap!"
Howzit:	Casual greeting meaning "How are you?"
Just now:	Soon, but not immediately.
Now-now:	More urgent than "just now," but still not "now."
Braai:	A South African barbeque (cultural staple).
Robot:	Traffic light. "Turn left at the next robot."
Sjoe:	Expression of awe, relief, or surprise.
Ag:	Filler for mild annoyance or affection. "Ag man."
Ag shame:	Sympathy or affection. "Ag shame, that's sweet."
Jol/Jolling:	To have fun or go out socially. "We're going to jol."
Chommie/ Chomi:	Friend. "He's my chomi."
Bru:	Friend, pal, mate.

CONTACT DIRECTORY

Sarah van der Westhuizen

Director: Centre for Global Engagement

Email: saravdw@sun.ac.za

Werner de Wit

Senior Programme Manager: Unit for Student Mobility

Email: wdw@sun.ac.za

Kalon Damons

Coordinator: Student Mobility

Email: exchange@sun.ac.za

Michelle Masango-Plato

Administrative Officer: GEP Courses

Email: gep@sun.ac.za

Vuyo Dambuza

Intern: Integration & Student Life

Email: isos@sun.ac.za

Carmien Snyman

Assistant Director: SUI Services Centre

Email: cns@sun.ac.za

Angelo Jephtha

Coordinator: International Student Life & Success

Email: acj@sun.ac.za

Mariska April

Coordinator: Student Mobility

Email: skema@sun.ac.za

Chloe Appollis

Coordinator: Logistics & Transport

Email: suiarrivals@sun.ac.za

Alysa-Abby Kekana

Intern: Community Engagement

Email: vce@sun.ac.za

Sarah Richmond

Senior Programme Manager: Unit for Global Learning

Email: sarahrichmond@sun.ac.za

Julia Ndebe

Coordinator: Student Mobility

Email: studyabroad@sun.ac.za

Leoné Wilkinson

Administrative Officer: International Student Life & Success

Email: wilkinson@sun.ac.za

Carly Arlynn Fielies

Administrative Officer: Housing Officer

Email: interhouse@sun.ac.za

Semester Student Finance Matters

Email: mobilityfinance@sun.ac.za

IMPORTANT NUMBERS

CSCD ER24 Hour Emergency Number

010 205 3032

Centre for Student Counselling and Development

021 808 4707

studysuccess@sun.ac.za

Office hours 08:00-16:30

Disability Unit

021 808 4707

disability@sun.ac.za

Equality Unit

021 808 3136

unfair@sun.ac.za

hiv@sun.ac.za

Unit for Psychotherapeutic and support services

021 808 4994 (Stellenbosch Campus)

supportus@sun.ac.za

Unit for Academic Counselling and Development

021 808 4707

studysuccess@sun.ac.za

Unit for Graduand Career Support Services

021 808 3568

careerservices@sun.ac.za

Campus security

021 808 2333

Campus Health

021 808 3496

FOLLOW US

(AND JOIN OUR GROUPS TO ASK QUESTIONS)



Stellenbosch University International



@su_globally



@SU_globally



52 Ryneveld St, Stellenbosch Central, Stellenbosch



Stellenbosch

UNIVERSITY
IYUNIVESITHI
UNIVERSITEIT

forward together
sonke siya phambili
saam vorentoe