




Travel Guide

for incoming staff mobility



Welcome Wamkelekile Welkom

We are pleased to welcome you to Stellenbosch University and trust that your visit will be both productive and rewarding. As a research-intensive institution with a strong commitment to international collaboration, Stellenbosch University values the exchange of ideas and partnerships across borders.

This travel guide, prepared by SU International, is intended to support your visit by providing practical information and useful insights to help you navigate our campus and the surrounding area.

We look forward to welcoming you and wish you a pleasant and successful stay.



Visiting Stellenbosch University

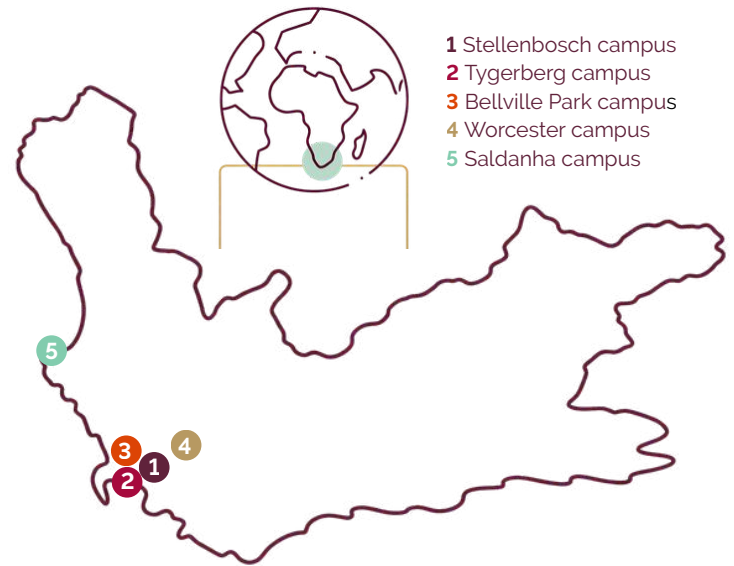
In terms of Vision 2040, Stellenbosch University (SU) aims to be Africa's leading research-intensive university, globally recognised as excellent, inclusive, and innovative, where we advance knowledge in service of society.

Our Story

Starting out in 1918 in the historic oak-lined town of Stellenbosch, SU had four faculties (Arts, Science, Education, and Agriculture), 503 students and 40 lecturing staff. Since then, we have grown into a vibrant and cosmopolitan community of more than 32 000 students and nearly 3 500 academic and support services staff spread over ten faculties and five campuses. Our undergraduate and postgraduate student community includes over 4 000 international students from 100 countries.

In 2018, our centenary year, we launched Vision 2040 and Strategic Framework 2026-2030. In this guiding document, we commit ourselves to cultivating a thriving SU, providing a transformative student experience, fostering purposeful partnerships and inclusive networks, promoting networked and collaborative teaching, conducting research for impact, and being an employer of choice.

Our Campuses

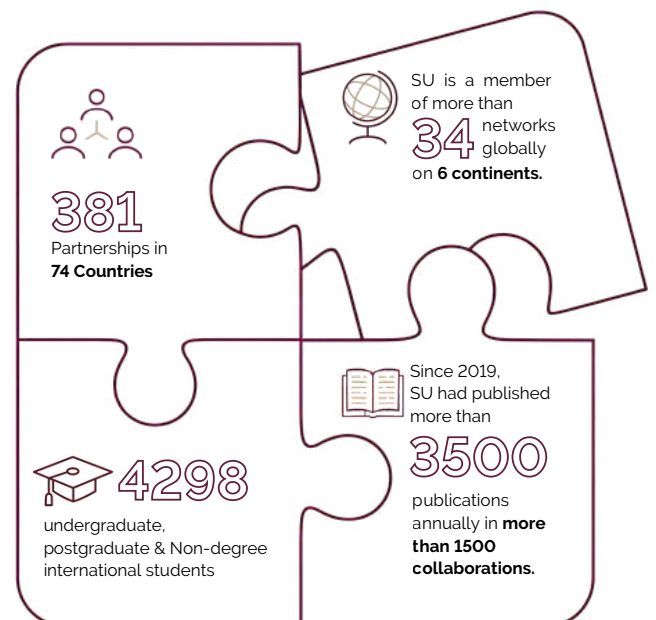


Where We Are

Stellenbosch is located in the Western Cape province of South Africa, in the most southern part of Africa. The University is about 30km from Cape Town and 30km from Cape Town International Airport.

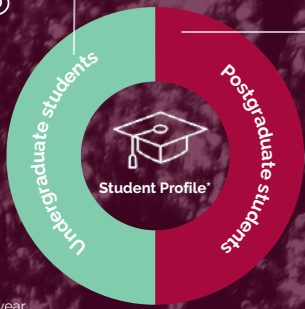


Internationalisation at SU



23 998

11 120



International Student Profile*

3 529

*stats as per 2025 academic year

*this profile represents a subset of the total of undergraduate and postgraduate enrollment

SU Rankings

301th

In the World University Rankings 2026

302nd

in QS World University Rankings 2026

2nd in Africa*

according to Times Higher Education 2026

Faculties



AgriSciences



Engineering



Science



Arts and Social Sciences



Law



Theology



Economic and Management Sciences



Medicine and Health Sciences



Education



Military Science

Schools



School for Data Science and Computational Thinking



School for Climate Studies

Research for Impact



SU is a founding partner of the African Research Universities Alliance (ARUA). This Alliance of 16 African universities promotes & strengthens research on the continent.



According to official figures that the Department of Higher Education and Training (DHET) released in 2022, we are among **South Africa's top three research intensive universities**, both per capita and in terms of total research output

7 centres of excellence of the Department of Science and Innovation and the National Research Foundation (DSI-NRF).

505 researchers with a National Research Foundation (NRF) rating. These include 22 A-rated researchers.

50 research chairs of which **20** are South African Research Chairs Initiative (SARChI) chairs, funded by the Department of Science Innovation through the National Research Foundation.

Institutional Game Changers



SU's established **School for Data Science and Computational Thinking** is already regarded as a **leader** in its field.



Our School for Climate Studies conducts interdisciplinary and transdisciplinary climate-related research in and for Africa. It is also the **first school of its kind in South Africa** that enjoys faculty status.



SU also launched the **SDG/2063 Impact Hub**. The Hub was established to measure the institution's contribution to, and advocate for, the uptake of both the UN 2030 Agenda and its SDG's, as well as the AU's Agenda 2063.



in 2023 SU launched a **world-class biomedical research facility in Africa, for Africa**. The BMRI houses more than 500 biomedical researchers and students, including some of the **world's foremost scientists** in the fields of bioinformatics, tuberculosis, neuroscience, and urology.

Supporting a Smooth and Rewarding Travel Experience

Whether you are an experienced traveller or undertaking your first international visit, this guide has been developed to support your journey with clarity and confidence. It provides essential information to assist you in navigating your travel arrangements efficiently and ensuring a well-prepared and rewarding experience



Documentation

- [SU International Immigration Support Page](#)
- **Erasmus+:** Kindly ensure that your E+ documents are signed before arrival.



Accommodation

- View accommodation options in Stellenbosch [here](#).
- For accommodation enquires, contact interhouse@sun.ac.za



Logistics

- Book SUI airport transfers [here](#).
- Uber is widely used in South Africa. Download the app [Google Play](#) and [Apple Store](#)





Key Contacts

- **Lidia du Plessis** (Programme Manager for Staff Internationalisation)
 - lidia@sun.ac.za
 - **Tel: +27 21 808 2607**
- **General enquiries:**
 - interoff@sun.ac.za



Navigation

- SU International address:
 - **52 Ryneveld Street, Floor 1, Krotoa** Building, Stellenbosch Central, 7600
- Download the Stellenbosch University Campus Map [here](#).



Safety & Security

- Stellenbosch and its surroundings are safe, and you can walk around at night, **However, we do encourage guests to be vigilant with personal belongings** and should you feel unsafe while walking, **rather walk in a group**.
- **Campus Security** is available on campus, and you can use the following numbers if necessary.
- **Stellenbosch Campus Emergency Numbers:**
 - **Tel: +27 21 808 2333**
 - **Whatsapp: +27 82 808 2333**



Power Outlets in South Africa

- **Type C:** two round prongs
- **Type B:** three round prongs in a triangular outlet
- South Africa operates on a **230V supply voltage and 50Hz**
- Visit the Electrical Safety First website [here](#)

Things to Do in Stellenbosch and Its Surroundings



SU Botanical Gardens

- The oldest university garden in South Africa
- An accredited conservation practitioner garden
- Contains both indigenous and exotic plants
- The *Botanical Café and Shop* lies within the gardens
- Explore the SU Botanical Gardens [here](#).

Rupert Museum

- Houses modern collections of South African Art
- Amassed by Dr Anton Rupert and Huberte Rupert in 1940.
- The museum oversees the Rembrandt van Rijn Collection.
- Explore more of the Rupert Museum [here](#).



Franschhoek Wine Valley

- Home to the world-famous Franschhoek Wine Tram.
- Home to the Franchhoek Motor Museum that offers a glimpse of a 100 years of motoring history.
- Find out more about Franschhoek [here](#).



Boulders Beach

- Located in Simon's Town, a 1.5 hour's drive from Stellenbosch.
- Home to an endangered land-based colony of African Penguins.
- The beach is ideal for swimming as immense boulders shelter the cove from currents.
- Explore more about Boulders Beach [here](#).

Victoria & Albert Waterfront

- The V&A Waterfront is an iconic mixed-use destination located at the oldest working harbour in the Southern Hemisphere.
- [City Sightseeing South Africa](#) offers a wide range of sight-seeing activities and experiences from their famous open-top Red Busses.
- Explore more of the V&A Waterfront [here](#).



Table Mountain

- One of the 7 Natural Wonders of the World
- 70% of all plants found on Table Mountain are endemic to South Africa
- One of the oldest mountains in the world with rocks dated to be 600 million years old.
- Explore more of Table Mountain [here](#).



“South Africanisms”

“Ubuntu”

A Bantu term meaning “humanity”. Sometimes translated as *“I am because we are”*

“Brrr-eye” - The South African rendition of a barbeque. A braai typically includes a variety of meats, traditional Boerewors (“farmer’s sausage”), breads, and maize meal cooked over an open fire.

“Braai”

“Howzit”

An assimilation of “how is it?” that is typically used as an informal greeting. It serves as a “Hello” and “How are you” combined into one.

Pronounced “shahp” - usually used in conjunction with a thumbs up to indicate “all is good”.

“Sharp”

“Lekker”

Afrikaans for describing a feeling that is good, fun, pleasant, *and* delicious. This word is used by all language groups in South Africa to express satisfaction.

Rusk, or “beskuit (Afr.) is a typical Afrikaner version of “biscotti” (but bigger and chunkier) that is usually enjoyed dunked in a cup of coffee or tea.

“Rusk”

Traveler's Check List

- Passport & Visa
- Boarding Pass & Flight Information
- Wallet and Cash for Currency Exchange
- Accommodation Address and Booking
- Camera, Hat & Sunscreen
- Phone, Laptop Charger & Power Adaptors
- Toothbrush & Hand Sanitizer



Contact Details:

Client Services Centre:

Tel: +27 808 9111 | Email: info@sun.ac.za

General international enquiries:

Tel: +27 20 808 2565 | Email: interoff@sun.ac.za

Discover SU:

www.su.ac.za/en/suinternational

