



Study at Stellenbosch University

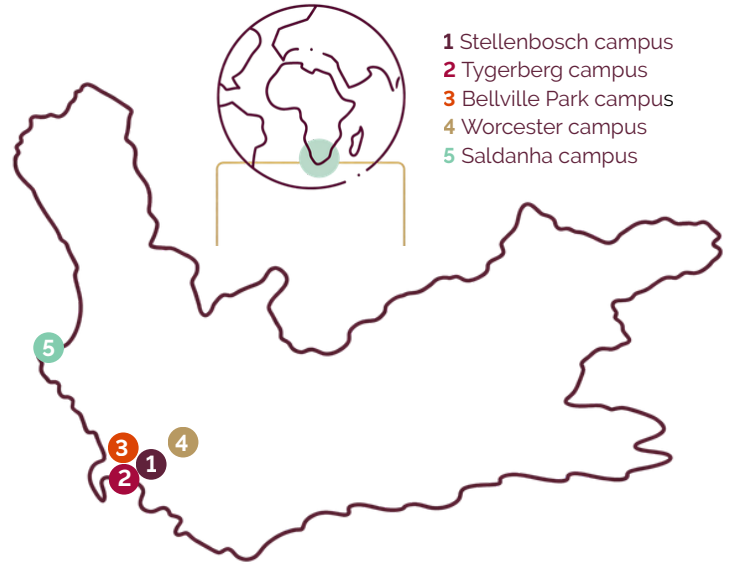
In terms of Vision 2040, Stellenbosch University (SU) aims to be Africa's leading research-intensive university, globally recognised as excellent, inclusive, and innovative, where we advance knowledge in service of society.

Our Story

Starting out in 1918 in the historic oak-lined town of Stellenbosch, SU had four faculties (Arts, Science, Education, and Agriculture), 503 students and 40 lecturing staff. Since then, we have grown into a vibrant and cosmopolitan community of more than 32 000 students and nearly 3 500 academic and support services staff spread over ten faculties and five campuses. Our undergraduate and postgraduate student community includes over 4 000 international students from 100 countries.

In 2018, our centenary year, we launched Vision 2040 and Strategic Framework 2026-2030. In this guiding document, we commit ourselves to cultivating a thriving SU, providing a transformative student experience, fostering purposeful partnerships and inclusive networks, promoting networked and collaborative teaching, conducting research for impact, and being an employer of choice.

Our Campuses

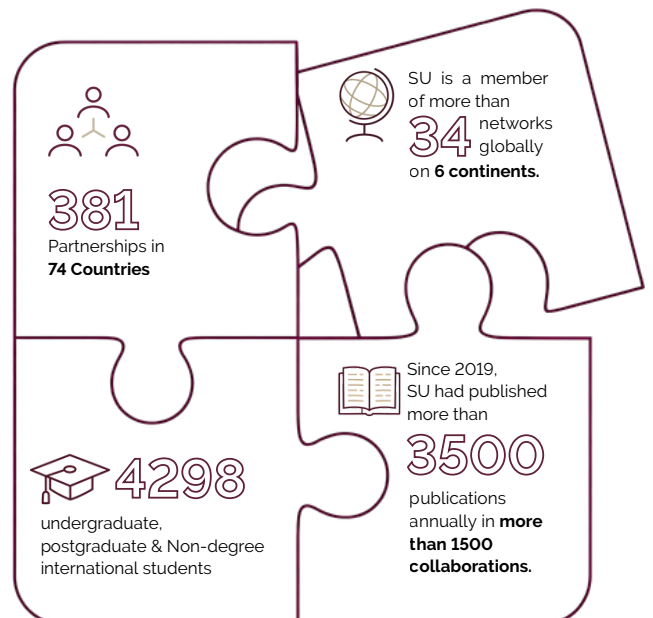


Where We Are

Stellenbosch is located in the Western Cape province of South Africa, in the most southern part of Africa. The University is about 30km from Cape Town and 30km from Cape Town International Airport.

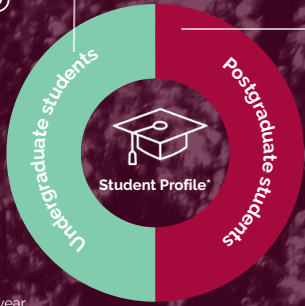


Internationalisation at SU



23 998

11 120



International Student Profile*

3 529

*stats as per 2025 academic year

*this profile represents a subset of the total of undergraduate and postgraduate enrollment

SU Rankings

301th

In the World University Rankings 2026

302nd

in QS World University Rankings 2026

2nd in Africa*

according to Times Higher Education 2026

Faculties



AgriSciences



Engineering



Science



Arts and Social Sciences



Law



Theology



Economic and Management Sciences



Medicine and Health Sciences



Education



Military Science

Schools



School for Data Science and Computational Thinking



School for Climate Studies

Research for Impact



SU is a founding partner of the African Research Universities Alliance (ARUA). This Alliance of 16 African universities promotes & strengthens research on the continent.



According to official figures that the Department of Higher Education and Training (DHET) released in 2022, we are among **South Africa's top three research intensive universities**, both per capita and in terms of total research output

7

centres of excellence of the Department of Science and Innovation and the National Research Foundation (DSI-NRF).

505

researchers with a National Research Foundation (NRF) rating. These include 22 A-rated researchers.

50

research chairs of which **20** are South African Research Chairs Initiative (SARChI) chairs, funded by the Department of Science Innovation through the National Research Foundation.

Institutional Game Changers



SU's established **School for Data Science and Computational Thinking** is already regarded as a **leader** in its field.



Our **School for Climate Studies** conducts interdisciplinary and transdisciplinary climate-related research in and for Africa. It is also the **first school of its kind in South Africa** that enjoys faculty status.



SU also launched the **SDG/2063 Impact Hub**. The Hub was established to measure the institution's contribution to, and advocate for, the uptake of both the UN 2030 Agenda and its SDG's, as well as the AU's Agenda 2063.

in 2023 **SU launched a world-class biomedical research facility in Africa, for Africa**. The BMRI houses more than 500 biomedical researchers and students, including some of the **world's foremost scientists** in the fields of bioinformatics, tuberculosis, neuroscience, and urology.



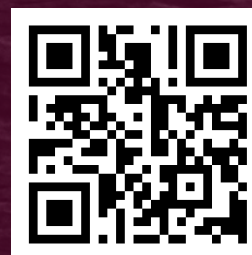
Contact Details:

Client Services Centre:

Tel: +27 808 9111 | Email: info@sun.ac.za

General international enquiries:

Tel: +27 20 808 2565 | Email: interoff@sun.ac.za



Discover SU:

www.sun.ac.za