



**WELCOME TO THE
REPUBLIC OF**



HELDERBERG



**WELCOMING
BOOKLET 2026**

ONLY THE BRAVE



Stellenbosch

UNIVERSITY
IYUNIVESITHI
UNIVERSITEIT



TABLE OF CONTENTS

1. Welcome Letter from the Residence Head
2. Welcome Letter from the President (*Primarius*)
3. Welcome Letter from the Head Advisor (*Head Mentor*)
4. General Information
 - a. When to arrive
 - b. Parents' Meeting (**NB: Parents must please sign up for this**)
 - c. Directions to Helderberg
 - d. Overview of Rooms
 - e. Other Facilities
5. Newcomer Questionnaire (**NB: All Newcomers must complete this**)
6. About Us
7. Important Contact Details
8. amaMaties Cluster Welcoming Letter
9. Cluster Newcomers Athletics Meeting
10. Sustainability at SU
11. Photography, Videography and Social Media Consent Form
12. Accommodation Rules





Stellenbosch

UNIVERSITY
IYUNIVESITHI
UNIVERSITEIT



WELCOME TO HELDERBERG | WAMKELEKILE EHENDERBERG | WELKOM BY HELDERBERG

Dear Swarra (nickname given to everyone who is part of the Helderberg community)

Welcome to our community! I am Bantubonke Louw, the Residence Head of Helderberg. I hail from the Free State and have been living in Stellenbosch since 2010. I am a proud husband and father. My family and I live on the residence premises and look forward to welcoming you to Helderberg.

You will be joining a community of brotherhood, friendship, and care where we learn and grow with and alongside one another. We hope Helderberg becomes your second home where you'll feel a great sense of belonging and develop a passion to contribute to the growth of our community. **Welcome home, Swarra!!**

This is the beginning of a fantastic journey, that'll shape you in unimaginable ways. Your university journey will be a transformative experience, where you'll be challenged both in and outside of the classroom. Embrace the challenges, ride the wave of change and sense-making, tackle it with an open and inquisitive mind, and remember to not be afraid to make mistakes – as long as you immerse yourself in the learning opportunities that come with making mistakes. The university is a microcosm of society – it is therefore imperative that you embrace the responsibility to help contribute to knowledge production for the advancement of our society. Immerse yourself in the wide variety of opportunities for engagement that the university community offers, be it academic, social, sport, cultural and otherwise. Become a proud and involved Matie and make use of all the opportunities and resources Stellenbosch University provides.

Our values are Brotherhood, Respect, Accountability, Vriendskap (Friendship), and Enthusiasm – BRAVE!

We trust that you'll embrace and embody these set of values in all your engagements, in and outside of Helderberg. We look forward to engaging and discussing these values with you, so that you may make sense of them and apply them in ways that'll be meaningful to you. You are Helderberg! You are therefore a representation of our values. This means that wherever you may find yourself in the world, anybody should be able to experience our values in and through their engagements with you.

I work very closely with the student leadership team (the Cabinet and the Advisors) to ensure you have a fruitful experience in our community. As mentioned, I live on the premises, so my door is always open. If you see my office light on, you're welcome to pop in for a coffee and a chat. Otherwise, please feel free to send an email to bantu@sun.ac.za or call me on **021 918 4211**.

See you soon!!!

BANTUBONKE LOUW (RESIDENCE HEAD)



**LETTER FROM THE PRESIDENT | ILETA EVELA KUMONGAMELI | BRIEF
VANAF DIE PRESIDENT**

Dear New Swarra,

First and foremost, welcome to the Republic of Helderberg! It is an honour to have you join our community, and my Cabinet and I look forward to walking this exciting chapter with you. By stepping into Helderberg, you are not just entering a residence, you are joining a proud brotherhood built on tradition, growth, and unity.

Helderberg is a home where each Swarra is seen, valued, and encouraged to thrive. Whether you are looking to excel academically, build lifelong friendships, grow in leadership, or simply find a place where you belong, the Republic is ready to support you. We believe in creating an environment where you can strive, succeed, and become the best version of yourself.

Our location in central Stellenbosch places us within reach of everything you may need: the peaceful path of Die Laan along the Eerste River, nearby restaurants, supermarkets, medical facilities, and our sister residence, Isa, just across the road. Although we're slightly further from campus than some residences, our involvement in the **amaMaties Cluster** ensures that you remain connected to a dynamic student community filled with opportunities to engage and participate.

Life in the Republic is vibrant and full of spirit. From sports like rugby, soccer, hockey, squash, and many others, to signature events such as Repfees, our historic Derby against Simonsberg, House Dance, and the State Banquet you can look forward to many moments that will shape your student experience. Helderberg has a proud tradition of excellence, and we celebrate our achievements together as one.

As you join us, I encourage you to bring your energy, your voice, and your unique strengths. Helderberg is shaped by the contributions of its residents, and we believe that every Swarra plays an important role. You belong here, and you matter here. You will be supported by a dedicated Cabinet (House Committee) and a team of Advisors who are ready to guide you, mentor you, and help you settle into your new home. Together, we will help you find your place, your purpose, and your confidence as a member of the Republic.

If you have any questions or need assistance, please feel free to reach out to me directly at **083 670 7874** or via email at **26618907@sun.ac.za**.

Welcome to your new family.
Welcome to your new community.
Welcome to the Republic.

Hail the Republic,

The President (2025/2026)
Enile Ezenagu

**LETTER FROM THE PRESIDENT | ILETA EVELA KUMONGAMELI | BRIEF
VANAF DIE PRESIDENT**

Beste nuwe Swarra,

Welkom by die Republiek van Helderberg! Dit is vir ons 'n groot eer om jou by ons gemeenskap te verwelkom, ek en my Kabinet sien uit om hierdie opwindende nuwe hoofstuk saam met jou te stap. Wanneer jy Helderberg binnestap, betree jy nie net 'n koshuis nie, jy sluit aan by 'n trotse broederskap gebou op tradisie, groei en eenheid. Helderberg is 'n tuiste waar elke Swarra gesien, waardeer en aangemoedig word om te floreer. Of jy akademies wil uitblink, lewenslange vriendskappe wil bou, as 'n leier wil groei, of eenvoudig 'n plek soek waar jy hoort, die Republiek staan gereed om jou te ondersteun. Ons glo daaraan om 'n omgewing te skep waar jy kan strew, slaag en die beste weergawe van jouself kan word.

Ons ligging in sentrale Stellenbosch plaas jou naby alles wat jy mag benodig: die rustige roete van Die Laan langs die Eersterivier, restaurante, supermarkte, mediese fasiliteite, en ons susterskoshuls, Isa, net oorkant die pad. Alhoewel ons effens verder van kampus af is as sommige ander koshuise, verseker ons betrokkenheid by die **amaMaties-kluster** dat jy steeds verbind bly met 'n dinamiese studentegemeenskap vol geleenthede om deel te neem en betrokke te wees.

Die lewe in die Republiek is lewendig en vol gees. Van sportsoorte soos rugby, sokker, hokkie, muurbal en vele meer, tot kenmerkende geleenthede soos Repfees, ons historiese Derby teen Simonsberg, Huisdans, en die State Banquet, jy kan uitsien na talle oomblikke wat jou studente-ervaring sal vorm. Helderberg het 'n trotse tradisie van uitnemendheid, en ons vier elke prestasie saam as een.

Soos jy by ons aansluit, moedig ek jou aan om jou energie, jou stem en jou unieke sterk punte saam te bring. Helderberg word gevorm deur die bydraes van sy inwoners, en ons glo dat elke Swarra 'n belangrike rol speel. Jy hoort hier, en jy doen saak hier. Jy sal ondersteun word deur 'n toegewyde Kabinet (Huis komitee) en 'n span Adviseurs wat gereed staan om jou te lei, te mentor en jou te help om tuis te voel in jou nuwe huis. Saam sal ons jou help om jou plek, jou doel en jou selfvertroue as deel van die Republiek te vind. As jy enige vrae het of hulp benodig, is jy welkom om my direk te kontak by **083 670 7874** of per e-pos by **26618907@sun.ac.za**.

Welkom by jou nuwe familie.
Welkom by jou nuwe gemeenskap.
Welkom by die Republiek.

Heil die Republiek

Die President (2025/2026)
Enile Ezenagu



Stellenbosch

UNIVERSITY
IYUNIVESITHI
UNIVERSITEIT



**LETTER FROM THE HEAD ADVISOR | ILETA EVELA KUMCEBISI OYINTLOKO |
BRIEF VANAF DIE HOOFADVISEUR**

Dear future Swarra,

I write this letter with great gratitude on my heart, to congratulate you on getting accepted to Stellenbosch University and joining your new home, the Republic of Helderberg, for the next few years. On behalf of the entire Mentor Team, I am honoured to welcome you into our space that is bumbazed by the spirit of brotherhood and enthusiasm.

Starting a new chapter can be nerve-wracking, scary at times, and might bring uncertainty, however I can assure you that those feelings they do not disappear, instead you take leap of faith even when you are scared or uncertain. Starting university can feel overwhelming, or have the fear of the unknown, however we are here to support you and walk with you on each every step to ensure you build a proper foundation that will sustain you throughout your university experience and make the transition easier.

Helderberg is situated within the heart of Stellenbosch, from campus than some other residences, but what makes us special is our strong sense of community, our traditions, and the real connections we build. One of our most important values is Brotherhood a lasting bond that goes way beyond just living in the same place. As Head Mentor, my aim and purpose is to help, guide you and your mentor as you move from high school to university life. Our Constitution says that a Mentor is "a senior student chosen to give first-year students support in all areas academic, social, physical, emotional, and spiritual." Your mentor will be your first brother here, standing with you through it all.

When you get to Helderberg or even before, you will be paired with a mentor and couple of students within the same faculty, which they will be your main contact support structure navigating your first year together. During the first few weeks you will be assisted by your mentors to ensure that you are registered to your beloved course, you obtain your student card, you know how to book meals, and etc. Our goal is to smooth the transition from high school to university throughout the year.

The year ahead will be full of new experiences, growth and memories you might never forget. You will be part of the 80th generation of first year citizens, and we hope you will embrace your Helderberg experience and cultivate your own. We normally say, you do not choose Helderberg, Helderberg chooses you. You have been chosen, and that is something to honour with love, care and respect. Your journey starts here...

If you have any questions or need help before you arrive, please feel free to contact me anytime. Enjoy the rest of your break and come back ready for this exciting new journey.

Congratulations again on joining Helderberg. We can't wait to welcome you home.

Thalente Khumalo (Head Advisor)

Email: 26241196@sun.ac.za

Cell: [067 145 2932](tel:0671452932)

GENERAL INFORMATION

When to arrive?

SOAR PROGRAMME	<ul style="list-style-type: none"> Starts on Saturday, 23 January 2026 This is applicable to only a specific group of students. Students who will be in the SOAR programme will be contacted separately.
LAW STUDENTS	<ul style="list-style-type: none"> Move in from 14:00-16:30 on Monday, 26 January 2026. Law Faculty Newcomer Students' Programme is from 18:00 – 20:00 at the Old Main Building/ Ou Hoofgebou (Advisors will direct parents and newcomer students to the building).
ALL OTHER NEWCOMER STUDENTS	<p>Students can arrive in any of the following two intervals:</p> <ul style="list-style-type: none"> 27 January 2026 – from 08:00 till 16:30 28 January 2026 – from 08:00 till 12:30 (late arrivals) <p>We encourage all newcomers to try and arrive on 27 January.</p>

Upon arrival, you will be shown to your room and given a chance to unpack and make yourself comfortable. At the end of each arrival block, there will be a **parent meeting** where parents will be given a quick introduction, welcoming and overview of the residence.

Parents' Meeting

The Residence Head will host a Welcoming Meeting for parents in the Helderberg Dining Hall. This is an opportunity for us to share more about Helderberg Residence with parents and offer them an opportunity to ask any questions. See below for details for the meeting.

Parents' Meeting	27 January 2026 – from 16:30 – 17:30
------------------	--------------------------------------

To help us with logistical and catering arrangements, we ask that parents please RSVP for the Parents' Meeting on this link: <https://forms.office.com/r/TjkHL8ALGu>

Directions to Helderberg Male Residence

Helderberg Male Residence is situated in Piet Retief Street, Stellenbosch. To get directions to the Residence, please see the Google Maps location details below:

- Click on the Location Pin to the right;  or
- Type in the following hyperlink: <https://maps.app.goo.gl/2mhyx2qWUcYFKeJR8>

Overview of rooms

Please note, we are a university residence, so the rooms have limited space. Please be mindful not to pack too many belongings. Each room consists of the following items:

- Bed, mattress, desk, lockable closet (please bring your own padlock), chair and shelf.

NB: No open element heaters, cooking stoves (hot plates) or electric blankets allowed. Please see a copy of the accommodation rules at the end of this document

We have parking available for cars, as well as bicycle racks and sheds on the premises for students who would like to bring along a car, motorbike, or bicycle. Please note students will have to **register and pay for parking (for vehicles only)**. More information on this will be provided.

Please note: all newcomer students stay in double rooms. Roommates will be assigned in the week prior to the start of the welcoming period due to late placements and cancellations. A very limited number of single rooms are available. **NB: the fees for a single room on average is about R12 000 more expensive than a double room.** Should a newcomer wish to stay in a single room, then they can submit a special request via the Newcomer Questionnaire link. To access the newcomer questionnaire, please click here: <https://forms.gle/w2nB2snipG6DQjXCA>.

Single room placement requests for newcomers will be considered based on the availability of single rooms.

Eduroam Wi-Fi is available in all our buildings to ensure internet access for all our students. Communal areas such as the Jack Wells and the Dining Hall are also equipped with internet access.

Other Facilities:

The additional facilities at Helderberg for your use include:

- Eetsaal/ Dining Hall (*also serves as study area*). We motivate our students to eat their meals in the dining hall as it is a great space to build relationships with fellow students. There is a shared microwave available, as well as a toaster, and a boiler for boiling water.
- Squash Court
- The Jack Wells (*community centre*).
- Laundry Room (*with option to do your own laundry or ask the staff member working in the laundry room to do it on your behalf – at a cost*).
- SwaRGA (*computer and printer area*).
- Plesierskuur (*braai area*).



Stellenbosch

UNIVERSITY
IYUNIVESITHI
UNIVERSITEIT



- Each section (shared by about 8-10 students) in the residence has a small kitchen area and a bathroom.
- Stelkor Medical Centre and Pharmacy is opposite Helderberg. Additional private services such as a dentist, psychologist, optometrist, etc. are also near the residence.
- For grocery shopping or your food needs, Spar and Checkers are situated about 350m from the residence.
- There are several restaurants within 100m to 500m from the residence.

Additional items to bring (please note these are recommendations)

Additional items you may need to help you settle in at Helderberg:

Essentials:

- Bedding (pillows, pillowcases, duvet, comforter, bedsheets for single bed)
- Comfortable shoes for walking
- Study lamp
- 5-meter extension cord and multiplug or 2-point plug
- Water bottle
- Athleisure/comfortable clothing (*bear in mind that Stellenbosch summers are generally very hot, though the nights are a little cooler*)
- Formal wear: a white-collar shirt and chino (If you have a suit and tie, bring it along), otherwise your best formal outfit (*for house meetings and dances*)
- *Laundry basket* and laundry detergent to do your washing in our washing room equipped with washers and driers
- Toiletries
- Sun block/sunscreen
- Medication (*recommended: prescription meds, flu meds, painkillers, allergy meds, band aids, etc. – please note, there is a pharmacy across the street from Helderberg*)
- Pocket Money
- Stationary
- Pad lock for your door (*we recommend waiting until you've arrived at Helderberg before you purchase a padlock. You and your roommate may want to split the costs of the padlock*).

Optional items:

- | | |
|---|--|
| <ul style="list-style-type: none"> • Electric Fan • Rechargeable light (<i>in case of loadshedding</i>) • Clothing hangers • Small inverter (<i>in case of loadshedding</i>) • Prestik (no nails are allowed to be drilled into the walls) | <ul style="list-style-type: none"> • Glass cup, mugs, spoons tea and coffee to use in your room • Fridge (<i>please note, you share a room with a roommate, so it might be best to decide on a fridge together</i>) • Carpet • Bicycle |
|---|--|





HIGH IMPORTANCE

Helderberg newcomer questionnaire:

We acknowledge that adjusting to university and living in a new town may be challenging for many students. As such, we aim to place newcomer students with roommates that have as many things in common with one another as possible. For us to get to know you a little better and to help us with additional information for our room placements, please complete the **Newcomer Questionnaire**.

- To access the questionnaire, click on the following link:
<https://forms.gle/w2nB2snipG6DQjXCA>

ABOUT US

<p>Website</p>	<p>Click on the image below, or visit us here: https://www0.sun.ac.za/helderberg/</p> 
<p>WhatsApp</p>	<p>For newcomers only – please join our 2026 Newcomer WhatsApp group by clicking on the image below, or by clicking on the following link: https://chat.whatsapp.com/CYDM5bpLkQcKkqWJfBP1oy</p> 
<p>Instagram</p>	<p>To join our Instagram family, please click on the image below, or follow us here: @helderbergres</p> 
<p>Facebook</p>	<p>Like and follow us on our Facebook page by clicking on the image below, or by clicking on the following link: https://facebook.com/helderbergres</p> 



Stellenbosch

UNIVERSITY
IYUNIVESITHI
UNIVERSITEIT



IMPORTANT CONTACT DETAILS

Welcoming Leaders



Mr Philip Olivier

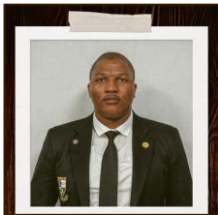
- Tel: 082 401 2714
- Email: 27973719@sun.ac.za



Mr Joshua Covill

- Tel: 076 407 3906
- Email: 27870987@sun.ac.za

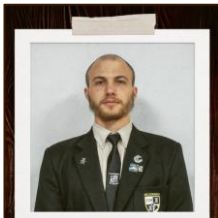
Head Advisor



Mr Thalente Khumalo

- Tel: 067 145 2932
- Email: 26241196@sun.ac.za

Vice President



Mr Riaan De Lange

- Tel: 072 412 8952
- Email: 27616126@sun.ac.za

President



Mr Enile Ezenagu

- Tel: 083 670 7874
- Email: 26618907@sun.ac.za

Residence Head



Mr Bantubonke Louw

- Tel: 021 918 4211
- Email: bantu@sun.ac.za



Stellenbosch

UNIVERSITY
IYUNIVESITHI
UNIVERSITEIT



PHOTOGRAPHY, VIDEOGRAPHY AND SOCIAL MEDIA CONSENT FORM

Please ensure you upload the signed form onto the Google Form (Newcomer Questionnaire)

During the Welcoming period and throughout the course of the year, our social media team will be taking pictures and videos to make some fun reels and capture all special moments for our media communication and marketing.

We want to ensure that you are comfortable with being photographed and possibly feature on our social media platforms. Please complete the consent form by ticking one of the options below:

I feel comfortable being photographed and featured on the Residence's social media platforms and hereby give consent.

I don't want to be pictured or featured on any of the Residence's social media platforms and hereby DO NOT consent to being photographed.

Name and Surname: _____

Student Number: _____

Signature: _____

Date: _____

Welcome to

amaMATIES



WHAT IS A CLUSTER?

A cluster is a grouping of residences and commuter student communities (CSCs), who together form a broader community where students can interact and collaborate with one another, making the university 'smaller'. It is the organizing principle for academic and social affairs.

WHO ARE WE?

amaMaties Cluster is made up of five residences: Erica, Serruria, Nemesia, Helderberg, and Huis Neethling, and two CSCs: Capri and Equité. We are one of the most active clusters on campus and enjoy hosting joint events and making use of our shared spaces.

OUR VALUES

Our cluster values are Ubuntu, Respect, Empowerment, Sense of Belonging and Individuality

amaMATIES Facilities

The amaMaties Cluster HUB facility is the physical base of our cluster and provides a gathering space and commons for the students of our cluster, ensuring a world class living and learning environment. This multifunctional space provides students with an area to meet, study, relax, and engage with each other between classes and other commitments.



The **HUB facilities** include:

- Study and relaxation area
- Tinie Louw dining hall
- Plug points for laptops and cell phones
- Early morning or late dining at the DELI
- Emergency backpacker rooms
- Maties Wi-Fi access (24/7)
- Lockers

Dear new Matie

You are now officially part of amaMaties Cluster. This is where your community becomes a part of something bigger. We are a vibrant, diverse and integrated student community – a space for not only pursuing knowledge but also forging lifelong friendships and experiences, a space that helps you come to the realization that self-awareness is the key to social change. We encourage you to embrace this diversity and seize the chance to learn from one another. Your learning journey is no longer confined to the lecture hall, so take advantage of all that the cluster has to offer. Your time at Stellenbosch University is a precious chapter in your life: Embrace it with an open heart and an eager mind – so that you, in turn, may become an integrated person who can take on the world with confidence, collaboration and compassion. Cherish the moments of discovery, the late-night study sessions (at the amaMaties Hub), the laughter with friends and the growth that comes with every challenge. Here's to meet you all and to the fantastic journey ahead.

All the best,
The amaMaties Cluster Team

Benita van Zyl



Cluster Education
Co-ordinator
benitavz@sun.ac.za
084 512 8795

Tetelo Rapheeha



Cluster Convener
29581370@sun.ac.za
079 342 0350

Jody James



Cluster Convener
26947633@sun.ac.za
082 475 8964

Zara Boehler



Cluster Admin Manager
28902416@sun.ac.za
065 559 8280

Lyanda Dlamini



Social Media Manager
27242986@sun.ac.za
068 712 1727

Beste nuwe Matie

Jy is nou amptelik deel van amaMaties. Dis waar jou gemeenskap deel van iets groters raak. Ons is 'n lewenskragtige, diverse en geïntegreerde studentegemeenskap – 'n ruimte waar ons nie net kennis najaag nie, maar ook lewenslange vriendskappe smee en ervarings deel; 'n ruimte wat jou tot die besef help kom dat selfbewussyn die sleutel tot sosiale verandering is. Ons moedig jou aan om hierdie diversiteit te omarm en die kans aan te gryp om by mekaar te leer. Jou leerervaring is nie meer tot die klaskamer beperk nie; haal dus die meeste uit alles wat die kluster jou bied. Jou tyd aan die Universiteit Stellenbosch is 'n kosbare hoofstuk in jou lewe: Omarm dit met 'n oop gemoed en 'n leergierige gesindheid – sodat jy, op jou beurt, 'n geïntegreerde persoon kan raak wat die wêreld met selfvertroue, samewerking en deernis aanpak. Koester die oomblikke van ontdekking, die laatnagstudiesessies (by die amaMaties Hub), die saam lag met vriende en die groei wat elke uitdaging bring. Ons tel die dae af totdat ons julle almal ontmoet en ons fantastiese reis begin.

Alles van die beste,
Die amaMaties Klusterspan

Matie omtsha othandekayo,

Kungoku nje ungomnye weeMaties ngokusemthethweni. Kulapha ke apho niluluntu labafundi nijika nibe yinxalenye yento engaphezulwana noko. Siluluntu lwabafundi olugcwele udlamko, olwahlukahlukeneyo nolunxibeleleneyo – le yindawo engeyiyo eyokuzingela ulwazi kuphela koko ikwayindawo yokwakha ubuhlobo bobomi bonke namava ngokunjalo, indawo ekunceda ekubeni uyiqonde into yokuba ukuzazi ngoyena ndoqo kwiinguqu entlalweni. Siya kukhuthaza ukuba ukwamkele oku kwahlukahlukana kambe ulithi xhakamfu ithuba lokufunda omnye komnye. Ihambo yakho yemfundo ayisaphelelenga nje kwiholo yeelektsha, ngako oko kunqakule konke le klasta enokukunika kona. Ixesha lakho kwiyunivesithi yaseStellenbosch sisigaba esinexabiso elikhulu ebomini bakho: Lamkele ngentliziyo ekhululekileyo nengqondo enxanelwe ulwazi – ukuze wena, ngokunjalo, ube nokuba ngumntu onxityelelekisiweyo onokujongana nehlabathi ngokuzithemba, ngentsibenziswano nangovelwano. Yivuyele loo mizuzwana yokubhaqa okutsha, ukufunda kude kube sezinzulwini zobusuku (phaya kwiMaties Hub), ukuhleka nabahlobo nokukhula okuza nomngeni ngamnye. Sithi ngxatsho ngokwazana kwethu sonke nangohambo lwethu oluya kusikhwankqisa ekuhambeni kwexesha.

Ngemibuliso emihle, LiQela
leQoqo lamaMaties

CLUSTER NEWCOMERS

ATHLETICS DAY

COETZENBURG ATHLETICS
STADIUM

5 FEBRUARY 2026 17:30 - 20:30



PRESENTED BY THE CENTRE FOR
STUDENT LIFE AND LEARNING AND
MATIES SPORT



Eco-friendly living

How to reduce your carbon footprint and join the Net Zero Carbon journey

Water

- Water restrictions still apply.
- Use only 80 L /person/day.
- Shower 3 -5 min.
- Use eco-friendly personal products.
- No rinsing or washing with running water.

Energy

- Use LED lamps only.
- Limit fridge use to one 150 L bar fridge per room.
- Airdry clothes when possible.
- Turn off lights & unplug devices when not in use.
- Use A++ energy efficient appliances (low wattage).

Transport

- Everything is within easy walking distance on campus.
- Walk or cycle instead of driving.
- Hire a Matie bike.
- Share rides or use shuttles.

Waste

- SU has a zero waste to landfill goal.
- Buy less items that must be thrown away.
- Bring reusable bags, cups, bottles and containers - no single use items.
- Compost food scraps & sort recyclables properly.
- No wet items in the recycling bin.

Get involved

- Join your community Green/Sustainability Com.
- Follow: @su.environmental.sust



Stellenbosch

UNIVERSITY
IYUNIVESITHI
UNIVERSITEIT



sunc**m**

your value partner

Supporting the University through Business

ACCOMMODATION OFFERING AND RULES

1. Procedures and rules applicable to maintaining order

- 1.1 Upholding the residence and accommodation rules rests firstly with the relevant resident head of a residence or student house, the head student and the house committee, and the students must assist these office bearers.
- 1.2 The resident head or PSO coordinator must submit the house rules (internal house rules, which are also applicable to other types of residential environments, such as clusters, apartments and houses) and any changes thereto to the Director: CSC.
- 1.3 The members of the house committee are responsible for upholding the rules and regulations of the University, the residence rules, the accommodation rules and the rules of the relevant cluster or house.
- 1.4 The Residence Head is responsible for ensuring that only students who are placed in residence by the Residence Placement Office, are residing in residence.

2. Procedures and rules applicable to the accommodation offering

- 2.1 All accommodation in a University residence, apartment or house is allocated for a full academic year, subject to the provisions for the vacation of residence rooms/University houses during certain vacations and second rounds of examinations. Accommodation fees exclude the June/July & December/January recess periods (refer 2.3 below).
- 2.2 Accommodation in a University residence implies occupation of the allocated room, as determined by the University from time to time in the course of the year, excluding certain vacations;
- 2.3 The University reserves the right to utilize the rooms to accommodate other persons during certain vacations.
- 2.4 Outsiders (i.e. those who are not students placed in the particular residence for the particular year) may not overnight in residences during the academic year without the permission of the resident head.
- 2.5 The keeping of weapons is strictly prohibited and any resident who is caught with a weapon will be suspended from residence immediately.
- 2.6 No animals may be kept. Any animal will immediately be removed and handed over to the local SPCA.

3. Procedure and rules applicable to damage to facilities and infrastructure

- 3.1 Residents and/or their guests will be held financially liable for any damage caused by them in the residence. They are also responsible for the state of the rooms they occupy, as well as the furniture and equipment contained therein, and will be liable for any damages that they, or others, or devices used by them or others, may cause.

3.1.1 All monies payable for damage caused by a student/students in a University



Stellenbosch

UNIVERSITY
IYUNIVESITHI
UNIVERSITEIT



residence will be charged to his/her student account as a single amount or in instalments, as determined by the Finance Division in consultation with the student.

- 3.1.2 Any damage that cannot be attributed to a specific student/students (unidentified damage) will be recovered from the residence's House fund.
- 3.2 SU, the University Council and University staff are not liable for the loss of or damage to the personal property of residents of a residence. The residents must themselves ensure that their property is insured sufficiently. This includes fire or water damage and theft.
- 3.3 Only single power plugs or multi-plug distributors with SABS-approved trip switches may be used in 15 amp wall sockets. All other forms of power distribution, such as dual plugs, temporary wiring and the like, are strictly prohibited. Only one device with a proper three-wire cord will be permitted per socket in a multi-plug distributor.
- 3.4 No switchboards, trip switches or permanent electrical wiring may be tampered with.
- 3.5 No equipment that may pose a fire or other risk will be permitted in rooms. The University reserves the right to confiscate such equipment.
- 3.6 Fire extinguishers are placed in predetermined positions in residences and may only be removed in the case of fire.
- 3.7 Under no circumstances may emergency equipment such as fire extinguishers, fire hydrants and the contents of emergency plan boxes be misused or tampered with. Such transgressions will be punishable by summary eviction.
- 3.8 Any form of obstruction in corridors and thoroughfares, such as bicycles and motor scooters, is strictly prohibited.
- 3.9 The unauthorised stacking of waste paper, cardboard or any other flammable material in any room of the residence is prohibited. (Residences have designated places where this type of material may be stacked for recycling purposes.)
- 3.10 Residents may under no circumstances undertake any maintenance work themselves (this include any painting of walls).
- 3.11 For safety reasons, occupants of residences will be required to remove all their belongings from their rooms and leave all cupboard doors open prior to their departure for the end-of-year vacation or any other break for which the University may require the rooms. Where practical (excluding in the December/January vacation), the resident head, in consultation with the house committee, will designate an appropriate room where students' belongings may be stored. Storage will only be provided for properly packaged and identified items. Any storage space in the facility will be under the supervision and control of the house committee.
- 3.12 Residents will receive a price list for certain categories of damage at the beginning of the year.
- 3.13 Structural changes to furniture or University property are not permitted under any circumstances.

4. Procedure and rules applicable to Rooms / Furniture.

- 4.1 A room will be presented to the student, at which stage the student will be required to sign an "inventory" confirming the state of the room. After the room is vacated, or on agreed ad hoc inspections, it will again be inspected by the Residence Services Coordinator. In the case of any discrepancy with the inventory form, damages will be recovered from the student's account. Inspection is however not limited to the end of the year.
- 4.2 Only one fridge (up to a maximum of 150 liters) will be permitted per room.
- 4.3 Any items such as traffic signs, information signage, shopping trolleys, flower boxes and



Stellenbosch

UNIVERSITY
IYUNIVESITHI
UNIVERSITEIT



waste bins that are not the property of the residence, and therefore of the University, are strictly prohibited in any area of the residence or on the related premises, irrespective of whether these were used, bought, exchanged or donated.

- 4.4 No furniture, equipment and curtains may be removed from a room/rooms or any other areas at the residence without the written permission of the Residence Head and the Residence Services Coordinator which permission shall be requested in writing by the Student. Students shall be responsible to hang their own curtains in such instances. It is the students' responsibility to return the room to its original state before vacating the room.
- 4.5 The University will not be liable for the loss or damage of residents' property, and residents will be personally responsible for arranging the necessary insurance cover. This includes fire or water damage and theft.
- 4.6 All rooms must be accessible for inspection from time to time to authorised residence staff.
- 4.7 Residents must allow access for cleaning staff to their rooms to clean the rooms as and when requested.

5. Procedures and rules applicable to accommodation during vacations

- 5.1 Residents who remain in Stellenbosch during vacations, and who are required to vacate their rooms in terms of the procedure for the vacation of residences for certain vacations, may apply for accommodation in a residence/residences made available for this purpose by the University, upon payment of the applicable levy and on any other specific conditions that may apply from time to time.

6. Procedure and rules applicable to laundry and bedding

- 6.1 Residents are required to provide their own bed and bath linen, e.g. duvets, duvet covers, sheets, pillowcases, blankets and towels. It is recommended that residents also bring with them a mattress protector.
- 6.2 Students who wish to do their own laundry will be able to use paid-access washing machines and tumble dryers. Students will receive a quota, levied against their student accounts, to pay for these services. It must be noted that, once funds are transferred to the student card, it is similar to a cash withdrawal and money not spent cannot be refunded.
- 6.3 Students shall report the presence of pests for example bed bugs to the Residence Services Coordinator immediately and shall be willing and available to vacate the room until such time that the necessary pest control treatments are applied. In such an instance, students shall wash and clean all their own bedding and clothing as a preventative measure.

7. Procedures and rules applicable to meals and preparation of food

- 7.1 Where applicable, catered meals will be available during the academic terms, on conditions determined by the University from time to time; and
- 7.2 Hot plates, electric frying pans or similar apparatus with open elements that may be deemed a fire hazard, may not be used in the residence rooms, but only in areas that have been approved by the Risk Management Division.
- 7.3 Microwave ovens may be used in rooms in accordance with approved conditions.



Stellenbosch

UNIVERSITY
IYUNIVESITHI
UNIVERSITEIT



- 7.4 No food may be prepared in rooms or on verandas or balconies.**
- 7.5 Meals may only be provided to students who have booked meals on the student portal (mymaties.ac.za). In all instances, meals must be booked via the online system at least one day in advance. Where students have failed to book, they may receive a meal at double tariff, should there be food available after the relevant meal time.
- 7.6 Upon registration at the beginning of the year, all residents are required to select a meal quota based on their own requirements. Non-residents may also register to have meals at a residence, on conditions determined by the University from time to time. For example, PSO students in a specific cluster may book meals in the dining halls of the residences in that cluster that is accessible to PSO students.
- 7.7 Parties and special events (see residence rules – also applicable to other types of accommodation) will only be permitted at the applicant's expense. The resident head will exercise control.
- 7.8 Alcoholic beverages will only be permitted in residences in accordance with the provisions contained in the Residence rules as amended from time to time.
- 7.9 Meal times are determined by the resident head, in conjunction with the SunCom and the service provider.
- 7.10 Students that require Halaal prepared food can apply for access to such dining facilities at the office of the SunCom (bjmalan@sun.ac.za or lab@sun.ac.za).
- 7.11 The residence kitchens are for the exclusive use of the allocated catering contractor.
- 7.12 The use, other than for dining in the dining hall will only be allowed if it does not have a negative impact on dining services and operations. No other external meal contractor or supplier are allowed to use any part of the kitchen preparation and serving area or dining hall for meal provision.
- 8. Procedures and rules applicable to conduct**
- 8.1 Students' conduct must at all times comply with the disciplinary code for students of SU (see Part 1 of the Calendar). Any potentially offensive actions must be avoided. The residence and other house rules must also be adhered to throughout.
- 8.2 In order to fill all available rooms and to keep pace with circumstances (such as economic considerations and actual enrolment figures), the University reserves the right to amend, cancel or add any provisions, procedures and rules (see also Chapters 1 and 2 of the Rules for Students of the University).
- 9. Construction and maintenance**
- 9.1 Students acknowledge and accept that from time to time, the University will upgrade built structures in and around residences and conduct necessary maintenance work that might have a negative impact on their living conditions and even sometimes necessitate temporary moving of students to different facilities.
- 9.2 At no time can the University guarantee uninterrupted supply of water, warm water, electricity or network connectivity.
- 9.3 Necessary measures will be taken to minimise any inconvenience as far as possible.

