



**Stellenbosch**  
UNIVERSITY  
IYUNIVESITHI  
UNIVERSITEIT



**KHAYALETU**

---

**WELCOMING 2026**



# CONTENTS OF THIS BOOKLET:

1. Our Story
  2. Letter from Spurgeon Wilson - Residence Head
  3. Letter from Jaden Franklin - Primaria
  4. Letter from Njilo Socikwa - Vice Primarius
  5. Meet Your Welcoming Leaders
  6. Letter from Bomi, Nina and Latitha - Welcoming and Head Mentor HCs
  7. KhayaCare - Social Impact
  8. Introducing our House Committee
  9. Introducing our Mentors
  10. Why we do Welcoming?
  11. Cluster
  12. Cluster Athletics
  13. Very Important Information
  14. Khayaletu Building
  15. Section and Direction
  16. Welcoming Programme Day 1
  17. Eco-friendly living
  18. Questionnaire
- 



# OUR STORY

Khayaletu, meaning “Our Home” in isiXhosa, was founded on a simple but powerful idea: that a residence should be more than a building. It should be a place where people feel seen, supported and connected. When we opened our doors in 2025, we weren’t just welcoming our first group of residents, we were beginning a story that each new student would help write.

Nestled on the edge of campus near the Engineering Faculty, Khayaletu stands proudly as Stellenbosch University’s newest co-ed residence. Our location gives us the best of both worlds: close enough to stay woven into campus life, yet far enough to grow a strong and distinct sense of identity. As part of the Validus Cluster, we value community, collaboration and the shared belief that leadership starts with how we show up for one another.

Home to around 160 students, Khayaletu quickly became known as the Home of the Jakarandas, a symbol of growth, renewal and resilience. Just like the jacaranda tree, our community started with young roots and has been growing steadily, shaped by every resident who lives here. Because we are still a new residence, our traditions are not inherited but rather created. Our culture is not fixed, it is formed by your voices, your experiences and your presence.

We are guided by five core values: **Accountability, Inclusivity, Integrity, Respect, Compassion** These are not just buzzwords but as the principles that shape how we live together.

# OUR STORY

Our story is not about perfection; it's about people. It's about students arriving from different backgrounds and becoming part of something bigger. It's about finding comfort after long days, discovering friendships that feel like family and knowing that there is always space for you to grow.

Khayaletu is still becoming and that is its greatest strength. Every year, new residents bring new energy, new ideas and new traditions. As you join us, you're not just stepping into a residence; you're stepping into a home that evolves because of you.

Welcome to Khayaletu.  
Welcome to Our Home.  
Welcome to the next chapter of our story.





# RES HEAD

Dear Newcomer

I am Spurgeon-Haddon Wilson, the Residence Head of Khayaalethu Residence. Welcome to Khayaalethu, your new home as from 2026.

As Residence Head I am responsible for your living and learning throughout your time here at Khayaalethu, and am really excited to journey with you.

Khayaalethu is a Xhosa/Zulu noun which translates to 'our home', and this name enables a welcoming culture that invites residents to be part of a new family – a home away from home.

Khayaalethu opened its doors (officially) in 2025 and is a fairly new community that is building its foundation to develop and mold the leaders of the future. As with all new things, it comes with excitement, but at the same time, with a huge responsibility... So, as you enter your new home next year, please remember that we need you to help us shape the ethos and culture of Khayaalethu for future generations. You as resident have the responsibility to reflect, challenge and contribute on a daily basis to make Khayaalethu a home away from home. So, I invite you to bring your best self, and help me, and your fellow residents to shape our house into a home and space that is welcoming and inclusive.

The House Committee of 2025/2026 really worked hard this year to craft a Welcoming programme for next year, that will make the transition from school to university a smooth one, but at the same time, create opportunities for learning, unlearning, and ultimately, growth. Thus, please take your time to read through the Welcoming information, and prepare yourself for a new adventure filled with excitement, new friendships and relationships, and a lifetime of memories.

I am looking forward to meeting you soon.

Spurgeon



# PRIMARIA

It is with great excitement and anticipation that I extend a warm welcome to each of you as you embark on this new chapter at Khayaletu and the University of Stellenbosch. Firstly, a big congratulations on being placed in Khayaletu and being accepted for your degree. You are a group of bright, ambitious individuals who are poised to leave a lasting mark on our esteemed residence and university community.

As you step through the gates of Khayaletu, you are not merely entering a residence; you are becoming part of a vibrant and supportive family. Your home away from home, where your dreams, aspiration and academic pursuits will be nurtured in an environment that promotes growth, learning and personal growth. University life is an adventure filled with opportunities and challenges, and it is through embracing both that we truly come into our own. This residence, nestled between the engineering campus and Lentilus Sports ground of the beautiful Stellenbosch campus, provides the perfect backdrop for your journey. As you gaze upon the serene surroundings, remember that you are now a part of a legacy that spans generations of scholars, leaders and change makers.

During welcoming you will encounter a wealth of knowledge, diverse perspectives, meet new people and experiences that will shape your journey and your character. Embrace each opportunity, lecture and discussion as a chance to grow and learn. Seek help from your mentor, engage with fellow residents and take advantage of the countless resources at your disposal. Remember, success is not merely measured by grades, but by the depth of your curiosity, the breadth of your experiences, and the resilience with which you face challenges. Take risks, step out of your comfort zone, and embrace the freedom to rediscover your true self. I encourage you all to be proactive in shaping your own unique narrative within Khayaletu. Join clubs, attend events, and engage with your peers. Your contributions, no matter how small they may seem, play a vital role in sculpting the vibrant culture of our residence.

In closing, I want to assure you that you are not alone in this journey. The mentors, senior residents, staff, and leaders at Khayaletu are here to support you every step of the way. Welcome to Home of the Jakaranda! Let this be the start of a transformative and unforgettable chapter in your academic and personal journey. I look forward to meeting all of you.

With much love, Jaden



# Welcome to Khayaletu Residence

Dear Newcomers

My name is Njilo Socikwa, Vice-Primarius of Khayaletu Residence, and it is my pleasure to welcome you to our community. We are excited to have you join us and hope you will quickly feel at home.

Khayaletu is known for its friendly and welcoming atmosphere, strong gees and a culture of supporting one another. This is a place where you can grow, build meaningful connections and make the most of your university experience. Although we are a bit further from the main campus, we are conveniently close to the Engineering Faculty, and our community spirit more than makes up for the extra distance.

As you settle in, I want to encourage you to reach out whenever you need assistance. University can be challenging at times, and there is no need to navigate it alone. At Khayaletu, we look out for each other, and you should never hesitate to ask for help. This residence is your new home, and we want you to feel supported throughout the year.

I look forward to meeting each of you and building a memorable and successful year together.

Warm regards,  
Njilo Socikwa

**Vice Prim**



# WELCOMING LEADERS



Nina Grobbelaar  
Welcoming HC



Bomi Khawalu  
Welcoming HC



Lathitha Siyakewna  
Head Mentor



# Letter from Bomi

To the Newcomers of 2026,

I would like to extend a warm welcome to the Khayaletu community. I am incredibly excited to meet all of you and, most importantly, to enjoy the orientation weeks together.

My name is Bomi Khawula, and together with Nina Grobbelaar, are privileged to be your Welcoming Leaders.

We've prepared a programme that is both fun and informative and with the support of the entire HC team and with big, vibrant energy from YOU, we hope it will be a successful period.

Khayaletu is more than just a residence; it's a community. You will soon learn that we are one big family of JaKaranda's. Our shared values guide us, keep us grounded, and help us move together towards common goals. The year ahead will bring academic challenges, but that's exactly what our community is here for, to support you and help you navigate every step.

We hope you are looking forward to the welcoming period and the exciting year ahead, filled with sports, events, and countless memories planned by your HC team.

Kind regards,  
Bomi Khawula  
Welcoming HC

# Letter from Nina

As one of the Welcoming Leaders for Khayaalethu, it brings me so much joy to introduce myself and to open my heart to you before you even arrive. My name is Nina and being part of the team that created the Welcoming Programme for 2026 has been one of the greatest honours of my university journey.



We have poured so much of ourselves into this process - our energy, creativity, our love for people because we truly care about the experience you are about to step into. I'm an enthusiastic person who thrives outdoors, who finds calm in nature and excitement in community, and who genuinely loves bringing people together. Planning events and shaping meaningful moments has always been something that makes me feel alive, and my biggest hope is that your welcoming experience becomes something you will carry with you for the rest of your life.

Khayaalethu is a young residence with a big heart, and you are about to become part of its story. I want this place to feel like a home you can return to on your best days and your hardest ones - a home where you feel safe to grow, to explore, to fail, to try again, and to become the person you are meant to be. You are not just entering a residence; you are stepping into a community that is ready to embrace you, celebrate you, and walk alongside you. I hope that as you settle in, you discover not only new friendships but also new parts of yourself - strengths, dreams, and passions you never knew were waiting to be uncovered. I cannot wait to meet each of you, to learn your stories, and to share in all the moments that will shape your journey at Stellenbosch University. Welcome to Khayaalethu. We already can't wait to see who you become and the unique light you will bring into our home.

Love Nina

# Letter from Latitha

Congratulations, you are now a MATIE!

We are so excited to welcome you to Khayaletu. This beautiful space will truly be your home away from home; a close-knit residence that, quite literally, does everything together. Whether it's 11 pm waffles runs at the Neelsie, movie nights and chats, or games that go on forever, you'll find it all here!



You're about to embark on a new phase of your life, full of new experiences. The next 3 to 4 years will be filled with growth, laughter, challenges, and forming lifelong friendships. This experience may be daunting at first, but come with an open heart and an open mind and truly take it in, I promise you will not regret it.

You will be guided by 14 wonderful mentors who are here to help you navigate your first year. They will be your first point of contact, helping you settle into res, find your classes, and understand what's expected of you academically, as the ultimately objective is to help you excel in your studies. You'll also be placed into mentor groups with other first years studying similar degrees. Your mentor will stay in touch throughout the year to check in, offer support and help you with anything you may need.

If you're feeling nervous or unsure, please don't worry. We were in your exact position not too long ago, so we know exactly what it's like to enter a brand new environment without knowing anyone. We are here to make this transition as smooth and joyful as possible.

In our team, we believe in leading with love and intention. Therefore, we'll be here to offer you our wholehearted support every step of the way.

Welcome home, Maties.  
I cannot wait to meet you all!

With love,  
Lathitha Siyekwana

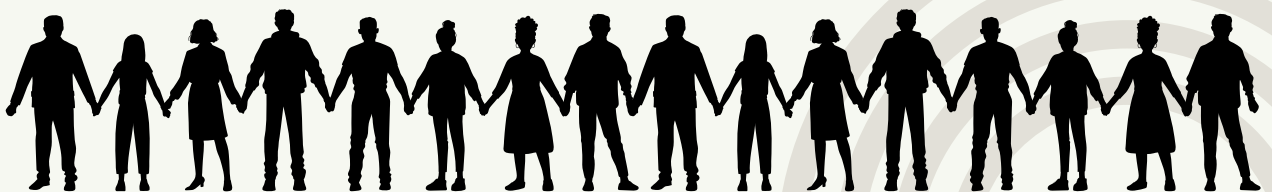
# KhayaCare

Dear Jakaranda

Welcome to Khayaalethu and congratulations on being part of a community that cares. You are now entering a space where we strive to have a positive impact on those around us as well as ourselves. The old saying 'Charity begins at home' is what we as a community pride ourselves on and is the foundation of our Khaya CARE a project based solely on taking care of the needs of our fellow Jakarandas.

Stellenbosch is a beautiful town, and we all get to share in its beauty and we believe that in the same way, it is also a place where get to share our struggles and Khaya CARE is an initiative that reflects exactly that. Because we care, no stomach should sleep unfed, and no student should be ignored. So, as you step into this world be prepared to share and give in whatever capacity you hold.

-Zintle Matebe



# HOUSE COMMITTEE



Jaden Amy Franklin

Primaria

- Leadership and Personal Development
- Interior

BSc Molecular Biology  
24963844@sun.ac.za  
076 119 2851



Njilo Socikwa

Vice  
Primarius

- Safety
- Room and Allocation Placement
- Parking Allocations

BSc Computer Science  
26403919@sun.ac.za  
081 243 7929

# GENERAL HOUSE COMMITTEE



**Zintle Mateba**

- Seniors comm
- Connect
- Social Impact
- Alumni
- Spirituality



**Sibabalwe Gobe  
Gysman**

- Culture
- Connect
- Maintenance
- Gender and Sexuality Alliance



**Nina Grobbelar**

- Socials
- Admin
- Welcoming
- Newcomers
- Community Building
- Sponsorships



**Aphiwe Maphumulo**

- Sustainability
- IT
- WomXn Empowerment Cluster

# GENERAL HOUSE COMMITTEE



**Lathitha Siyekwana**

- Head Mentor
- Wellness
- Critical Engagement



**Luhan Steenberg**

- Catering
- Spirit
- Khaya Week
- Newcomers



**Bomi Khawalu**

- Sports
- Welcoming
- Positive Masculinity
- Merchandise



**Rudairo Nyamande**

- Finance
- Social Media and Marketing
- Events

# MENTORS



KHAYALETHU

ENGINEERING



DEPUTY  
HEAD

Ethan Roome

ARTS & SOCIAL  
EDUCATION



DEPUTY  
HEAD

Kauthar Samsodien



# MENTORS



C  
O  
M  
M  
E  
R  
C  
E



Diya Magdani

S  
C  
I  
E  
N  
C  
E



Lee-ann Tjaljaard

E  
N  
G  
I  
N  
E  
E  
R  
I  
N  
G



Katleho Mpele

L  
A  
W



Nelissa Msutu

# MENTORS



C  
O  
M  
M  
E  
R  
C  
E



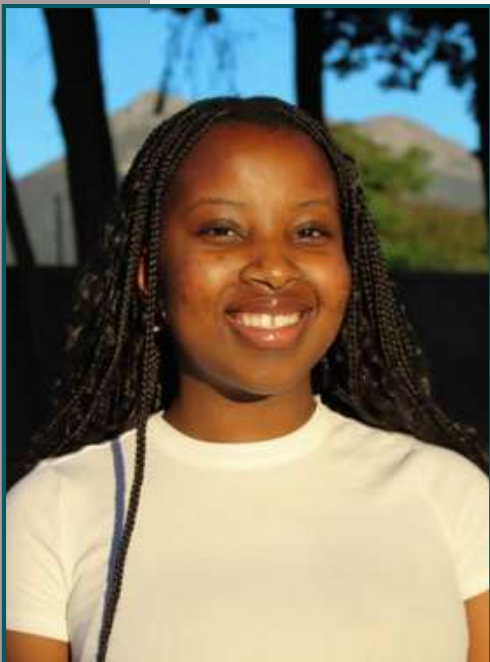
Joshua Wiemar

S  
C  
I  
E  
N  
C  
E



Lizanne Pretorius

C  
O  
M  
M  
E  
R  
C  
E



Xola Mcwetyana

L  
A  
W



Caitlynn Jonkers

# MENTORS

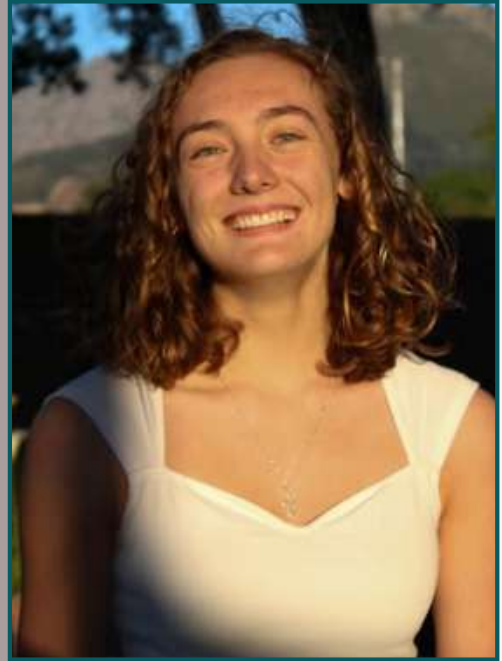


ENGINEERING



Alex Verappen

SCIENCE



Marine Greef

COMMERCE



Dylan Petersen

SCIENCE



Xola Radeba



# W E L C O M I N G



## Why We Do Welcoming?

When you walk through the gates of Khayaletu for the first time, you'll probably feel a mix of emotions — excitement, curiosity and maybe a hint of nerves. That's completely normal. Every one of us who now calls Khayaletu "home" once stood exactly where you will stand, wondering what the next few years would look like. That's why Welcoming exists.

Welcoming is Stellenbosch University's two-week orientation period designed to help you settle in, find your feet and start building your own story on campus. It's a time filled with energy, laughter, learning, late-night chats and the kind of memories that stay with you long after your first year ends.

At Khayaletu, Welcoming isn't just about attending events, it's about becoming part of a community. Guided by our values of Inclusivity, Respect, Accountability, Integrity and Compassion, our leadership structures are here to support you as you discover what life at Stellenbosch and life in Khayaletu truly mean. You'll meet new people, explore the campus, learn what's expected academically and get a feel for the rhythms of university life.

But most importantly, Welcoming is built with purpose.

Here's what we hope to achieve:

1. To make you feel at home — We want every newcomer to feel safe, comfortable and genuinely welcomed into the Khayaletu family from day one.
2. To help you form real connections — Whether it's finding a study buddy, a future best friend or simply someone to laugh with during an activity, we want you to leave Welcoming feeling like you belong.
3. To help you find your place and your purpose — Khayaletu is more than just a residence, it's a community. Welcoming encourages you to engage with your surroundings, understand your role, and start thinking about the kind of impact you want to make.

Welcoming is the first chapter of your SU journey — a chance to grow, explore and begin shaping the version of yourself you hope to become. We can't wait to walk this path with you.

Welcome to Khayaletu.

Welcome to Our Home.

# Welcome to Validus Cluster

Friendship Camaraderie Innovation

Hey Matie!

Congratulations on your conditional acceptance to Stellenbosch University, we are delighted to extend a warm welcome to the Validus Cluster.



## What's a Cluster?

Clusters are student communities designed to support your academic and personal growth. Clusters are friendly, engaging, and inclusive spaces full of opportunities to connect and network. Each of these factors will make your university experience truly exceptional.

## About Validus Cluster

Our Cluster includes Khayaletu, Goldfields, Simonsberg, Academia, Olympus, Huis Marais, ISA and Huis Visser, bringing our diverse communities together into one Validus Family.

## Meet the team



**Cluster Education  
Coordinator**  
Spurgeon-Haddon Wilson  
[spurgeon@sun.ac.za](mailto:spurgeon@sun.ac.za)



**Cluster Convenor**  
Que Dunsdon  
[27009106@sun.ac.za](mailto:27009106@sun.ac.za)



**Cluster Convenor**  
Kea Ndhlovu  
[@27347478@sun.ac.za](mailto:@27347478@sun.ac.za)

You will be familiarised with our Social Media Manager and Relationships & Admin Liaison during welcoming.

**We look forward to meeting you!!**

CLUSTER NEWCOMERS

# ATHLETICS DAY

COETZENBURG ATHLETICS  
STADIUM

5 FEBRUARY 2026 17:30 - 20:30

CLUSTER  
ATHLETICS



PRESENTED BY THE CENTRE FOR  
STUDENT LIFE AND LEARNING AND  
MATIES SPORT



# IMPORTANT INFORMATION

# YOUR MOVE IN GUIDE !

## KITCHEN

- SPONGES
- WASH CLOTHES AND DRY OFF CLOTHES
- CROCKERY
- CUTLERY
- POTS AND PANS
- KITCHENWARE
- AIRFRYERS

## BEDROOM

- BEDDING/COMFORTER
- PILLOWS
- MATTRESS PROTECTOR
- EXTENSION CORDS OR PLUGS
- DECORATION(PERSONALIZE YOUR SPACE)
- FAN

## BATHROOM

- SHOWER BAG/CADDY
- SHOWER SHOES
- PERSONAL BATHROOM ESSENTIALS

## WELCOMING

- APPROXIMATELY R600 FOR RESIDENCE MERCHANDISE
- REFILLABLE WATERBOTTLE
- SUN HAT
- COMFORTABLE WALKING SHOES
- SUNSCREEN
- SWIMSUIT
- ATHELETIC CLOTHING

## PLEASE NOTE

-NO HEATERS WITH OPEN ELEMENTS ARE ALLOWED ONLY THE FAN

-OUR KITCHENS ARE FULLY EQUIPPED BUT YOU ARE MORE THAN WELCOME TO BRING YOUR OWN FRIDGE

-UNDER NO CIRCUMSTANCES ARE YOU ALLOWED TO COOK IN YOUR ROOM

I  
M  
P  
O  
R  
T  
A  
N  
T  
I  
N  
F  
O  
R  
M  
A  
T  
I  
O  
N

# CONNECT INFO



White T-Shirt

**R39.99**

Size: XL



Colour: WHITE



**PLEASE BUY THE  
FOLLOWING MERCH  
FROM PEP STORE.**

**THIS WILL BE  
USED FOR CONNECT**

# WHAT DOES YOUR HOME LOOK LIKE?

## SINGLE ROOMS



## KITCHEN AND DINING HALL



## BATHROOM



## STUDY AND CHILL AREA



## RECREATIONAL HALL



## QUAD AND GARDEN



## BRAAI AREA



# SECTIONS

**MARULA**

**OAKLEY**

**CEDAR**

**JUNIPER**

**BOABAB**

**SEQUOIA**

**JACKELBERRY**



-Khayaletu  
Quad

# WHERE TO FIND US



## 📍 Address

Goldfields Rd,  
Stellenbosch Central  
Stellenbosch, 7599

**When you arrive at the Goldfields gate the Security booms will be open.**

**Khayaletu Parking will be on the left side pass the second security boom**

**HC and Mentors will be at the end of the parking lot and Khayaletu gate to welcome you.**

# Welcoming Programme

## Day 1

Tuesday, 27 <sup>th</sup> Jan	To welcome and excite
08:00 - 14:00	Newcomers Arrive
14: 00 - 16:00	Parents lunch
16:00 - 16:45	Final Goodbyes
16:45 - 18:00	Section Bonding
18:00 - 19:00	Supper
19:00 - 19:15	Free time
19:20 - 20:30	Spirit Session
20:30 - 22:30	Capture the Flag
22:45	Sleep

### **Please Note:**

During the Welcoming Period, you will be provided with three meals a day after which you will be able to choose to book meals or not. Money will be deducted from your student account to pay for these meals. please be sure to indicate what your dietary requirements are in the attached form.

# Eco-friendly living

How to reduce your carbon footprint and join the Net Zero Carbon journey

## Water

- Water restrictions still apply.
- Use only 80 L /person/day.
- Shower 3 -5 min.
- Use eco-friendly personal products.
- No rinsing or washing with running water.

## Transport

- Everything is within easy walking distance on campus.
- Walk or cycle instead of driving.
- Hire a Matie bike.
- Share rides or use shuttles.

## Get involved

- Join your community Green/Sustainability Com.
- Follow: @su.environmental.sust

## Energy

- Use LED lamps only.
- Limit fridge use to one 150 L bar fridge per room.
- Airdry clothes when possible.
- Turn off lights & unplug devices when not in use.
- Use A++ energy efficient appliances (low wattage).

## Waste

- SU has a zero waste to landfill goal.
- Buy less items that must be thrown away.
- Bring reusable bags, cups, bottles and containers - no single use items.
- Compost food scraps & sort recyclables properly.
- No wet items in the recycling bin.

# Questionnaires

We ask that you please fill in the questionnaires in this document:

- Personal Information:  
[https://forms.office.com/r/V6qFX37xKZ?  
origin=lprLink](https://forms.office.com/r/V6qFX37xKZ?origin=lprLink)
- Medical Information:  
[https://forms.office.com/r/hpyPnMzMQ1?  
origin=lprLink](https://forms.office.com/r/hpyPnMzMQ1?origin=lprLink)
- Questions you may have:  
[https://forms.office.com/r/YgpgFCYfhj?  
origin=lprLink](https://forms.office.com/r/YgpgFCYfhj?origin=lprLink)

*Very Excited  
To Meet you*