



# BIENVENUE CHEZ MOI

NERINA WELCOMING BOOKLET 2026

# contents

## WHO WE ARE

Nerina's Story	4
House Values	5
House Song	6
Mission and Vision	7
A letter from our Residence Head, Joy	8

## NCC

A letter from our Executive Leader, Julie	9
A letter from Welcoming Leader, Robyn	10
A letter from Safety and Discipline, Karabo	11
What is the NCC?	12
Meet the NCC	13

## MENTORS

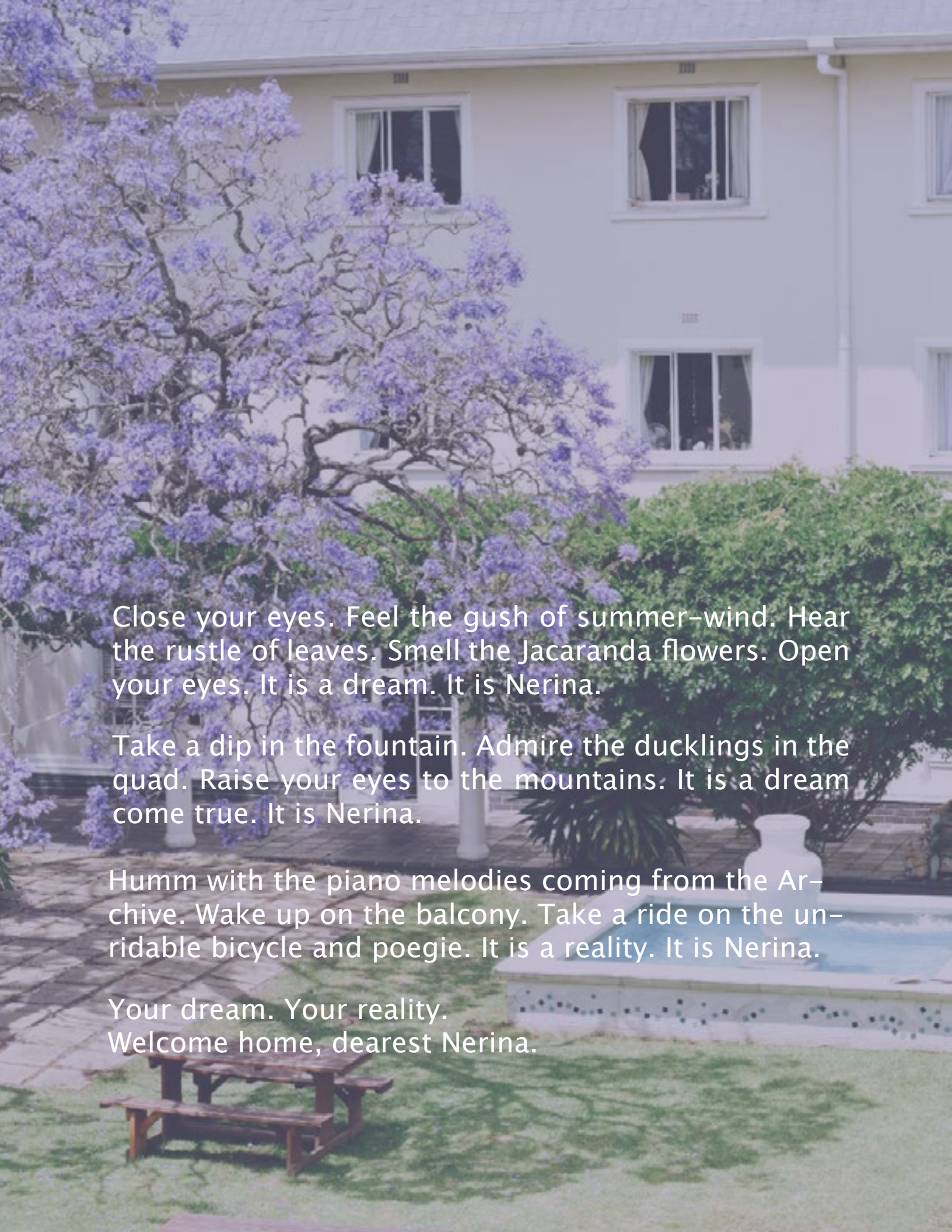
What is a Mentor?	19
Meet the Mentors	20

## WELCOMING NEED-TO-KNOW

What is a Cluster?	22
Nerina A to Z	23
Connect	26
Roommate Pairing	27

## IMPORTANT INFORMATION

FAQ's	28
University Registration	29
Important Dates	30
Checklist	31
Staying safe in Stellies 101	32
Important Contact Numbers	33
Sustainability information	34



Close your eyes. Feel the gush of summer-wind. Hear the rustle of leaves. Smell the Jacaranda flowers. Open your eyes. It is a dream. It is Nerina.

Take a dip in the fountain. Admire the ducklings in the quad. Raise your eyes to the mountains. It is a dream come true. It is Nerina.

Humm with the piano melodies coming from the Archive. Wake up on the balcony. Take a ride on the un-ridable bicycle and poegie. It is a reality. It is Nerina.

Your dream. Your reality.  
Welcome home, dearest Nerina.

# nerina's story

Nerina's name comes from the indigenous South African flower, Nerine Filifolia. This delicate, yet enduring flower brings colour to the open grasslands and humid locations in the Eastern Cape, Transkei, Eswatini, Mpumalanga and the Free State. It takes three years for this bulbous to bloom for the first-time during autumn – and likewise most Nerinas are rooted here in our precious home in Stellenbosch for about three years before they need to exit into the world and start to bloom in their respective careers.

Nerina hosted our first residents in 1968. The residence was only completed in 1969 and for the first year the residents had to use the back entrance next to “the most beautiful bicycle stands in the country”, as the front door was not yet complete. Mrs Rabie was Nerina's first residence head. Her dog, Brutus, was a beloved resident of the house and unfortunately passed a tragic death. He is laid to rest in Nerina's soil where he still finds peace in the purple shade of our beautiful Jacaranda. Oh, the stories our walls could tell... Stories filled with love, tears, joy, and growth.

Since 1968 Nerina has been home to many. With every new face that she greets, her face changes as well. While striving to grow and adapt as time goes by, we also know that our firm foundation was laid long before our time and will stand long after we leave. We often say, “Nerina is such a big part of our lives” but in fact, for a little while, we have the privilege of being part of hers.

Today Nerina's heart blooms with pride for our residence – a progressive and innovative home-away-from-home in the beautiful town of Stellenbosch. We stand for respect, integrity, Ubuntu, and potential development. We have continued this legacy by providing students with a stable environment in which to excel at their academic studies and social lives.

In this house, true to the roots of our name, Nerinas prosper and flourish.

But, until we get to meet you, just know that “there is no greater mystery than a woman...”

## RESPECT

Everyone wants to be treated with respect. However, being respected is something that comes from being respectful. In order for our home to be harmonious, respect is as important to our identity as the bicycle is to our quad.

## UBUNTU

Ubuntu philosophy is grounded values and principles of solidarity, kindness, cooperation, respect, and compassion. Ubuntu breaks down the barriers between residents to form from individuals a closeknit family.

# HOUSE VALUES

## POTENTIAL DEVELOPMENT

When you step out of Nerina one day, you will leave forever changed. At Nerina we strive to challenge ourselves. Therefore, we create an environment where everyone has a seat at the table.

## INTEGRITY

Being honest, trustworthy, and reliable is as part of Nerina's identity as the swing. Nerina is the safest space to fall. You may fall off the bike a few times, but it is standing up every time that makes the difference.

## SILENT VALUE

The value you bring to Nerina.

# house song

In Stellenbosch staan daar 'n huis op vaste fondament  
(In Stellenbosch there stands a house on a solid foundation)  
Waar elke dag 'n vreugde is en almal waarde het.  
(Where every day is a joy, and everyone has value.)

Nerina is a house of love where our friendships show  
We welcome one and all because together we grow.

Ukuhloniphana, Siyaphumelela,  
(Teaching others with respect, we flourish,)  
Umuntu, Ngumuntu, Ngabantu.  
(Because a person is a person through other people.)

Hier waar ons kan lewe, saam aan ons toekoms bou.  
(Here where we can live, build on our future together.)  
Hier beloof ons nou vir jou: Nerina, ewig trou!  
(Here we promise you now: Nerina, forever faithful!)



## mission and vision

Nerina is more than just a residence; it's a home that offers a sense of belonging, support, and growth to everyone who enters. Rooted in values of respect, potential development, ubuntu, and integrity, Nerina is a community that thrives on unity in diversity, creating an environment where everyone is celebrated for their unique qualities. Here, we believe in nurturing the potential within each individual, understanding that growth is a shared journey, and that together, we flourish.

Like a thriving garden, Nerina is a place where growth does not happen by standing still. To truly flourish, you need to plant your roots deeply (represented by our beautiful Jacaranda tree in our quad), embrace new opportunities, and soak up everything Nerina has to offer. It's a space where respect is found in every interaction, the spirit of ubuntu is present in every shared moment, and the opportunity for personal development is always within reach.

Nerina is a house designed to feel like a home a place where your roots can settle, your branches can stretch wide, and your heart can find its true place. It's a space that provides everything you need to grow: unwavering support, lifelong friendships, and a community where you will always belong. Together, we plant seeds of kindness, integrity, and compassion, and together, we watch each individual thrive in their own unique way.

So, we welcome you into Nerina, where growth is celebrated, and a bright future awaits. It's a home, a community, and the foundation for your journey toward becoming the best version of yourself. Here, you will find not only a residence but also a family and a place to call your own. Welcome to Nerina, where we grow and flourish as one.

A woman with glasses and a floral shirt stands in a courtyard. Behind her are large trees with thick trunks and dense green foliage. Purple flowers hang from the branches. In the background, there are white buildings and colorful recycling bins. The scene is bright and sunny.

## a letter from our residence head, joy

Sawubona!

Thank you for choosing Stellenbosch University and Nerina Residence – and if Nerina was not your choice – consider it divine intervention! Consider it your astrological fate! You are meant to be part of this rambunctious bunch! This crazy crew! We are a community of seriously silly and beautifully brave individuals!

Nerina is a significant stopover on your journey to becoming. As you shift and morph between adolescence and adulthood, Nerina will be a stable structure and constant comfort. In this house we sing, dance and laugh together! We play and we pray. In our caring about each other and challenging one another – we nourish an attitude of responsiveness and open-mindedness and cultivate a teachable spirit. Here we hope to be co-conspirators to fulfill each other's dreams and to reach the unimaginable, the (often thought as) impossible, and indeed, your inherent potential!

This may be the most important threshold of your life. As we start off this new adventure together, I want to let you in on the intention I set. I chose the opening salutation – SAWUBONA – as an invitation to each person making a new life in Nerina. As some of you know, “Sawubona” is a Zulu greeting that means “I see you,” but it carries a deeper meaning of acknowledging and valuing a person's whole being, including their essence and value. As the residential educator, the house-mother, the mentor, your coach and (most times) the observer and active listener in the background – this will be my endeavour: to truly see you, to be fully present in your company and to give you the delicious attention you are deserving of as member of this community and a fellow human.

I look forward to meeting you and walking alongside you on this uncertain, unknowable pilgrimage!

With much love

Joy

# A LETTER FROM YOUR EXECUTIVE LEADER, JULIE

Dearest New Nerinas,

Congratulations on stepping into this exciting new chapter of your life. You have closed the door on your high school years with strength and resilience, and ahead of you lies a world full of possibilities, opportunities, and adventure.

The transition from high school to university can feel overwhelming. Many of you are leaving behind the comfort of home, family, and everything familiar. But through all of this change, Nerina will be here for you – that warm, steady embrace at the end of a long day; a place where you can breathe, regroup, and belong.

When I first arrived at university three years ago, I felt everything all at once – the thrill of independence, the sadness of leaving my old life behind, the hope of making new friends, and the nerves that come with starting something completely new. Over time, those feelings shaped me. I grew, I learned, and I found a home.

Nerina became my safe space, the place where I stepped out of my comfort zone, joined in on our traditions, laughed in the hallways with new Nerinas, and shouted myself hoarse at sport games to support my friends.



Through every moment, big and small, this community wrapped around me and helped me become the woman I am today.

University can feel like a lot at times, but Nerina has a beautiful way of grounding you, supporting you, and reminding you that you are never alone.

As your Prim, it would be my deepest honour to help create a space where you feel seen, heard, valued, and uplifted. A space where you can grow confidently and leave here as the strongest version of yourself.

Welcome home,  
Chez moi. <3

# A LETTER FROM YOUR WELCOMING LEADER, ROBYN

Dearest Nerina Newcomers

For someone who claims they are ‘super chill’ it’s rather ironic that I’m starting our journey off with a quote, bear with me.

‘A place is only as good as the people in it.’ I’ll let you be the judge of that, but I reckon

Your time in Nerina is what you make of it. There is a place for you here. When you walk through those big wooden doors for the first time, (watch out for the wind – I learnt the hard way), I challenge you to open your mind to the endless opportunities that lie ahead. Show up. Not just to the socials or big events, but to simply be present in the small moments too. Get to know those you share this house with, as intimidating as it is at first. Greet your neighbours, have that conversation over the basin with a mouth full of toothpaste. You never know what friendship is waiting for you to break the ice.

I can’t promise that you won’t face trials or discomforts during your time in Nerina. Not only is your degree going to challenge you (take my word), but balancing this new chapter of life, away from home, is not easy either. Have grace with yourself, and know, that in Nerina, you are never alone. You aren’t just a number, you are part of a family, and we’re ought to look out for each other.



If you’re reading this thinking, I’ve got it all figured out. Believe me, you’ve been fooled. I hope you never feel that you are not where you should be. We learn as we go. What a blessing it is to not have to do it alone, and what a place is Nerina to be able to do it together.

My very humble advice: be kind, to yourself, and to others. Fill before you pour. Make it your mission to fill your ‘Nerina memory box’ with all the moments, big, small, good and bad. Experience it fully. I am so privileged to have this opportunity to get to know you all, I cannot wait.

Rock on,

Robyn

# A LETTER FROM SAFETY AND DISCIPLINE, KARABO

Lotjhani

It is happening!!! You're about to embark on an unforgettable adventure.

We are so excited to meet you and to be a part of your university journey. This journey is full of ups and downs but, trust me, the ups outweigh the downs. With all the ups and downs, memories are created. One thing I've learned here within the walls of Nerina is that unforgettable memories don't have to be created at big events. The chats in the bathroom while brushing your teeth in the morning; the corridor catch-up sessions on a random Tuesday evening; the balcony sleepovers; the serenades; lunch in the quad; swimming in the fountain – those are some of my favourite moments in Nerina. They are not big moments, but they are the ones that can turn a bad day into a great one.

If you haven't been to Nerina yet, you might have heard of her beauty, or have seen it in pictures. Trust me when I say that she is more beautiful in-person. The mountain view, the balconies, our beautiful quad, and the people that live within her walls are some of the many things that make Nerina stunning.

In Nerina, we are rooted in the values of respect, ubuntu, potential development and integrity. Additionally, we have a unique value – the silent value. A silent value is a value that is unique to each of us. It's a value that each Nerina gets to choose for herself.



As you prepare to join us, I encourage you to actively think about your own silent value, and bring it with you to Nerina. In that way as you grow, prosper and flourish, you can stay rooted in your silent value.

I live according to five values but the one that I chose as my 'silent value' is kindness. Like I said, this journey is one filled with ups and downs, so it is important for me to always remember to be kind to myself and to all those that I cross paths with. As the famous saying goes, "Kindness goes a long way."

Nerina is waiting in anticipation to welcome you to your new home. We cannot wait to meet you.

All my love,  
Karabo

# what is the ncc?

The Nerina Community Council (NCC) is the democratically elected student leadership body responsible for the management of Nerina as prescribed by Stellenbosch University. Most other communities refer to this structure as their House Committee (HC).

The NCC consists of 12 members, including the Executive and two Vice-Executive leaders. Our Vice-Executives are divided into two different portfolios: Welcoming and Safety-and-Discipline.

To serve on the NCC, house members who have lived in Nerina for at least three semesters are elected annually in August and serve a one-year term.

As the NCC, we are responsible for determining the strategic direction of the residence, execution of the vision and values of Nerina, enhancement of unity and residence participation as well as

Each NCC member is assigned various portfolios that consist of residence activities, events, and bodies. And it is their responsibility to ensure the success of each portfolio to create a memorable experience for all our residents.

As the NCC of 2025/2026, we are devoted to not only being leaders for the house but also to inspire, uplift and celebrate all of our Nerinas through everything we do. By rooting ourselves in our house values and being intentional in all of our decisions and events, Nerina will grow into a space that celebrates everyone who walks in and help to prepare them to grow and flourish in every way possible. We set ourselves a vision and mission for the year to keep ourselves accountable to grow and inspire growth. We are so excited to welcome you and for you to be a part of our legacy, and Nerina's story .

Julie

## nice things to tell your parents

- There is an NCC member that lives in every section.
- Every day an NCC member is on duty (standby), including weekends.
- Every night an NCC member locks the front door and ensures that all the visitors are signed out. Right through the night there is a door monitor at the back door to make sure we do not welcome any unwelcome guests.
- The treasurer runs an initiative called "The Fairy Godmother Fund", where we provide some essentials, like sanitary products and nonperishable food, for those in need.
- Many of the NCC members live far away from home too, so you will always have a friend on the weekends!



# MEET THE NCC





**Julie Seynhaeve**  
Executive Leader

Prim Committee | House Meeting and House Forum  
| Newcomers Room Allocation | Project Managers  
Favourite snack: Popcorn  
Interesting fact: Has slow taste buds



**Robyn Hough**

**Vice-Executive Leader**

Welcoming Leader | Newcomers Committee |  
Year Planning | Seniors Committee |  
Election Convenor  
Favourite snack: dried fruit  
Interesting fact: Very allergic to tea  
Mountain View



**Karabo Masilela**

**Vice-Executive Leader**

Duty Roster | Constitutional Committee  
Safety & Discipline | Door Monitors | Cluster |  
Favourite snack: Biltong  
Interesting fact: Can speak 5 languages  
Hyde Park



## Sibongakonke Dlamini

Head Mentor

Wellness Mentors | Academic Mentors |

Amiga | Mental Wellness

Favourite snack: Dark kit kat & red liquorish

Interesting fact: Can mirror write

Wall Street

## Cara Strauss

General NCC

Maintenance | Quad Market | Hype

Squad | Sport | IBN & Derby | Archive

& Balconies

Favourite snack: Woolies dark choc brownies

Interesting fact: Learnt alphabet in grade 3

One Way



## Isabella Burgers

General NCC

Sêr | Culture Evenings | Published Media

| Women's Breakfast | Critical Engagement

Favourite snack: Peanut butter

Interesting fact: Been in Nerina for 15 years

Quality Street

# Megan Jones

## General NCC

Vensters | Room & Parking Shooting |  
Social Impact

Favourite snack: Popcorn/ droëwors

Interesting fact: Loves wildflowers and fynbos  
(especially proteas)

Die Laan



# Iva Mtongana

## General NCC

Open Day | Nerina Week | Section Decor |  
Sectionals | Nerina Play | Skills Development

Favourite snack: Chocolate

Interesting fact: Is left handed

21 Jump

# Zani Hattingh

## General NCC

Secretary | Communications | CSG  
| House Dance | Alumni

Favourite snack: Biltong

Interesting fact: Eats food in a specific order –  
the best bite for last

Champs Élysées





## Alexa Steenkamp

General NCC

Treasurer

Seniors Dinner | Garden Party

Favourite snack: Blueberries

Interesting fact: Serious NCIS fan

Broadway

## Asavela Masithela

General NCC

Culture & Spirituality | Molassesêr | Palesa Theatre Festival | Rec Hall & Tech | Critical Engagement

Favourite snack: Nerd gummy clusters

Interesting fact: Knows random facts about most random things

Rodeo Drive



## Meghan Damonse

General NCC

Social Media | Socials | Nerina Pub | House Fund Dance | Merchandise

Favourite snack: Speckled eggs

Interesting fact: Can play the harmonica

Sunset Boulevard



# Dylan Lee

## Strategic Advisor

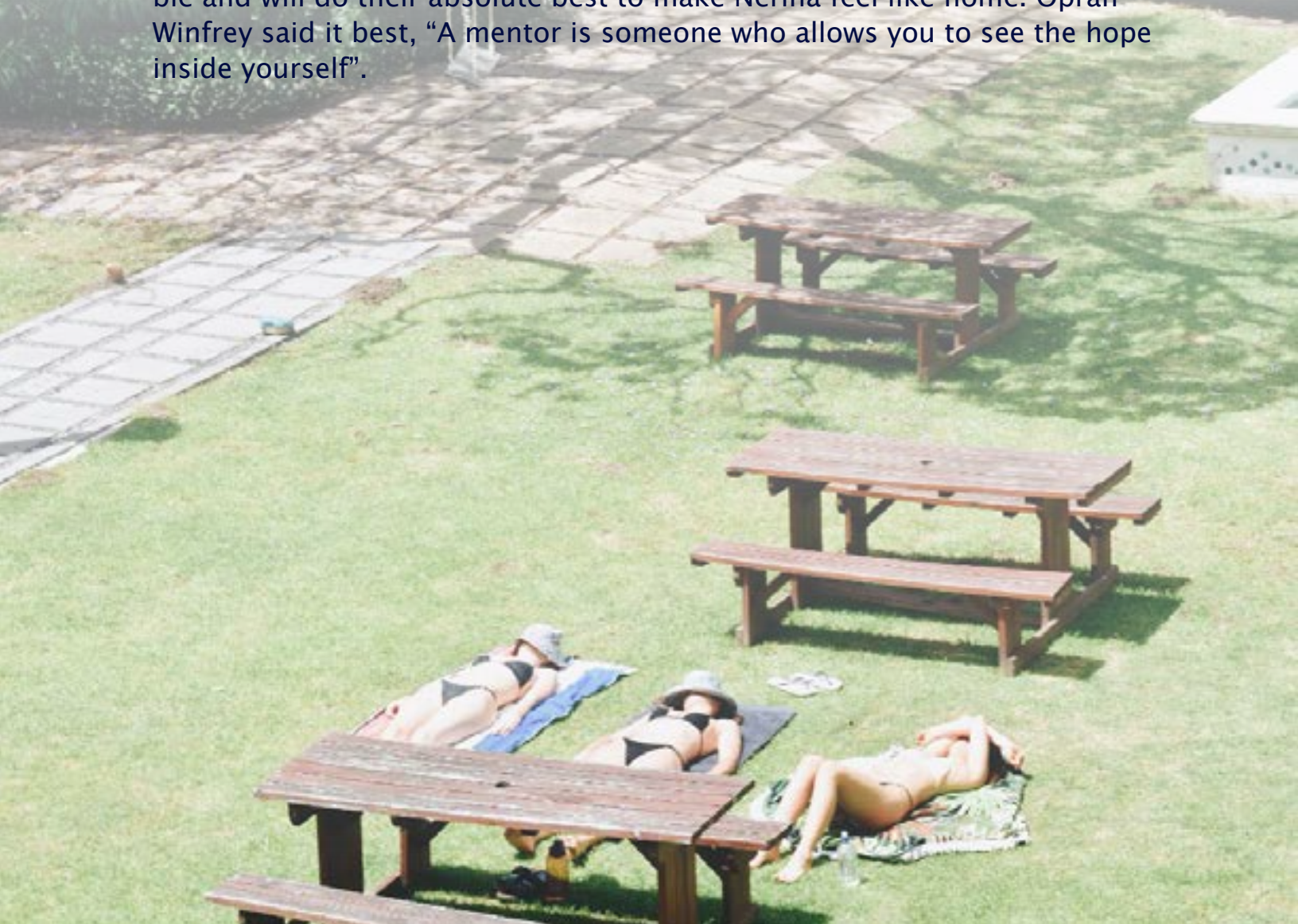
Favourite snack: Nougatelli Cookies and Salt and Vinegar Long Chips

Interesting fact: published work in a literature magazine in the Netherlands



# what is a mentor?

Our mentor programme in Nerina is a structure that provides support and guidance for the first years when transitioning into their university life-style. Mentors are that ear to listen, hand to hold and voice of encouragement. They help integrate first years into their new community by being a point-of-contact and helping them to take root and grow in the soil of Nerina. Mentors can be described as an older sibling, one that you like of course, that will motivate and inspire oneself to become fully emersed in what university has to offer. I know that the mentor team are highly capable and will do their absolute best to make Nerina feel like home. Oprah Winfrey said it best, “A mentor is someone who allows you to see the hope inside yourself”.



# MEET THE MENTORS



ANNAROSA PAYNE



CHRYSTAN  
WAGENSTROOM



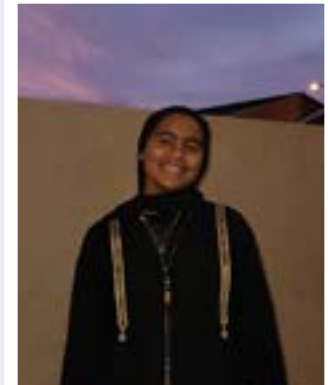
MARI SWANEPOEL



ANOVUYO  
MTHIMKHULU



ALICIA KARIUKI



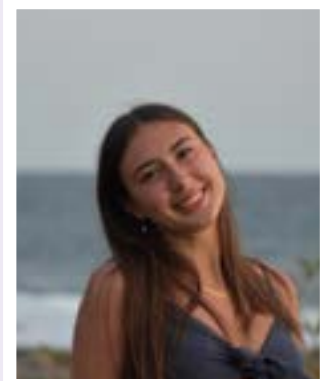
KAWTHAR  
ARENDESE



MILAH RICHTER



TARYN  
DEUTSCHEN



PHIA  
HEYDENREICH



BUNO MXOKOZELI



SOPHIA LEHER



RACHAEL  
SWANEPOEL



SHE-ILAH MUTALE



ELANCA VAN  
JAARVELD



LAYLA ERASMUS



KYLA WILDS

# what is a cluster?

Dear Newcomer,

Congratulations on your acceptance into Stellenbosch University, and welcome to RUBIX — a cluster known for its warmth, unity, and unmistakable sense of community.

Rubix brings together five diverse student communities — Heemstede, Metanoia, Nerina, Pieke, and Venustia — creating a space where you can feel supported from day one. Here, you'll find people who encourage you, challenge you, and walk with you as you find your place at Stellenbosch. It's a community where you can show up as yourself, grow confidently, and build connections that truly matter.

What makes Rubix special is the energy our students bring into every space — the willingness to show up, support one another, and create experiences that make this cluster feel like a second home. You'll quickly realise that Rubix is more than just a name; it's a feeling, a community, and a collective spirit you'll become part of.

As your Cluster Convenor, I'll be working alongside a dedicated and passionate team of student leaders who are just as excited as I am to welcome you into this community. Together, we're committed to creating spaces where you feel included, supported, and inspired throughout your journey at Stellenbosch.

Welcome to Stellenbosch. Welcome to Rubix.

We are Rubix.

Warm regards,

Cameron Fisher

Rubix Cluster Convenor

# NERINA A TO Z

Everything you need to know to own Nerina from the moment you step foot into our quad

## ALLES VIR DIE FIETS!

This translates to “Everything for the bike!” and is also a line we often sing when we are claiming back our beloved bicycle. It means that Nerinas will always give their everything to serve the house and their fellow Nerinas.

## ARCHIVE

The Archive is the NCC’s meeting room, a quiet study room, and a room filled with piano melodies and Nerina History. You can book it for personal use, or any other study room, by placing a note on the door to reserve your place.

## BICYCLE

Our bicycle is our well-known symbol and is parked in our quad. Stealing our bicycle is a popular activity on campus, so be on the lookout for possible suspects.

## BRUTUS

Brutus was our first resident head’s beloved dog. In honour of the little pup, Nerina’s quarterly magazine was named after him. This magazine is filled with fun news about fellow Nerinas, campus, and Nerina events hosted within the term.

## CHEZ DE MOI

Translating to “House of mine” from French, this line from our House Song describes the home you will find in Nerina. You will find a few French phrases living in Nerina, because we are just “so chic, so sleek, so unique!”

## COB

Nobody really knows what COB stands for, but what you need to know is that COB is a lifesaver when your monthly allowance is running low. COB is the term used for payment with your student account by tapping your student card at Neelsie fast food restaurants. It’s an alternative to booking meals at the dining hall.

## CRITICAL ENGAGEMENT

Critical Engagements are discussions held to learn more about each other and our perspectives on certain topics. The goal is to create an environment where we as Nerina's can voice our opinions and gain a deeper understanding of our differences and similarities.

## FISHBOWL

The Fishbowl is room where you study and have meetings. Procrastination is minimised as nothing is hidden behind the glass doors.

## FLOURISH

Just like the Jacaranda blossoms, in this house we prosper and flourish. It forms part of our house motto, "In this house we will prosper and flourish."

## FOUNTAIN

A wonderful place to take a dip on a hot day or just relax and enjoy the quad.

## GEES

Describing Nerina's energy is difficult, but GEES (aka spirit) is the closest you will get. It encapsulates the determination and passion with which we take on everything we do.

## HYPE SQUAD

The team that is responsible for creating and maintaining gees between Nerinas. Expect the unexpected.

## KITCHENETTE

Kitchenettes are like small kitchens that consist of a basin, tap, microwave and an urn. There are two kitchenettes each on the second and third floor.

## NERINA, EWIG TROU!

Translating to "Nerina, forever faithful", it is the last line of our house song. It means that Nerinas will always hold the house dear to their hearts and remain loyal to our home and true to our values.

## PANCAKES

This is our beloved mascot in the form of a blue stuffed bunny. We must protect him at all costs!

## POEGIE

Together with our bicycle we have a pink poegie. Does it work? You'll have to come and see!

## REC HALL

Throughout your stay at Nerina, you will hear about the Rec Hall a lot. This is where we have a variety of functions. It is also a go-to study spot in exams and ideal for washing your dishes.

## SEÑORINA

This is Nerina's yearbook. Every year we are spoilt with an aesthetic yearbook taking us down memory lane.

## STORAGE ROOMS

Each floor has two storage rooms in which Nerinas can store their belongings after evacuating their rooms for the June/July and December recesses. Only the NCC and mentors' student cards can access the storage rooms.

## TEEKAN

During exams our food providers spoil us with coffee, tea, and a sweet treat at 10:00 every weekday. This is the ideal time to take a quick break and enjoy the sweet company of fellow Nerinas.

## YODEL

Our beloved yodel is the one story you'll have to wait to be annoyed by!





# connect

HUIS VISARINA

Nerina x Huis Visser x Isa

Connect, or better known as Vensters, is exactly what its name states. It is an event created by the University to ensure that the newcomers not only connect with newcomers within their community but also with newcomers from other communities. The newcomers learn dances throughout Welcoming and at the end each connect partnership gets a chance to perform it on stage. There is also a drama portion in the performance, in which a few newcomers take part.

Connect is all about connections, fun, and gees!

Our partners this year are Huis Visser and Isa. Isa is a female residence and Huis Visser is a male residence, both from Stellenbosch campus. We are so excited to work alongside these communities to ensure the success of Connect 2026.

# roommate pairing

My roommate? This is without a doubt one of the most synonymous topics concerning a residence.

Your roommate becomes a companion, confidante, and friend. They see and support you through all your ups and downs of your 1st year at university. This looks different for everyone – some become best friends and some just live quietly together. Neither one is right or wrong – and different types of relationships works for different people.

Rest assured – we do not take roommate pairings lightly and approach it with the utmost intentionality. The pairings are based on the following:

- The results of your personality test we ask you to complete.
- The preferences you state in the roommate form.
- The sneak peek you share of yourself in the letter to me – Julie.

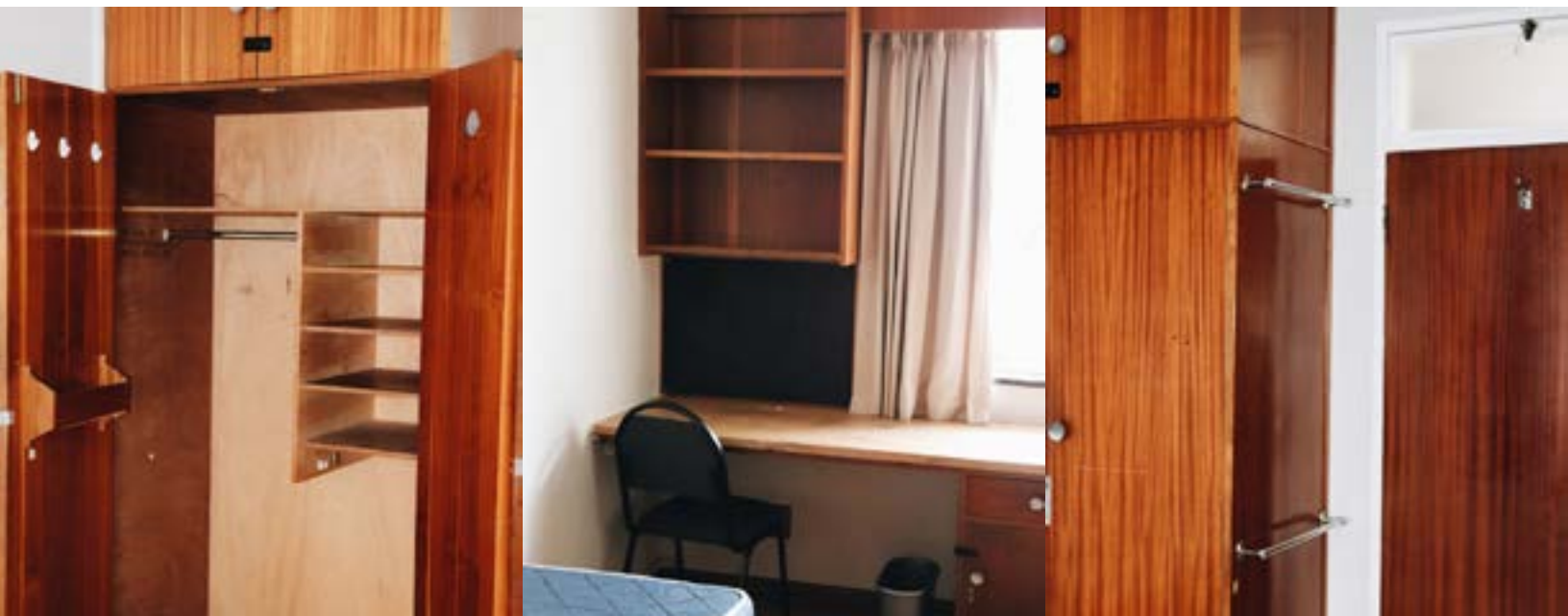
The more we know about you, the more accurately we can place roommates!

Our hope when pairing roommates is that you'll get along so well, that you'd room together again next year! There is no standard recipe to follow when working with unique people, but we pour our hearts into thoughtfully curating the placements with the greatest love and care.

Julie Seynhaeve (Executive Leader)

Each room is furnished with:

- Built-in desk
- Shelves above the desk
- Two chairs
- Two bedframe and mattresses
- Two built-in closets
- Curtains and/or blinds
- Two full-length mirrors
- Two garbage bins



## HOW DO MEALS WORK DURING WELCOMING AND THE YEAR?

During Welcoming, you will receive three meals a day provided by our food providers, CSG. After Welcoming you can book breakfast, lunch, and dinner in the Dining Hall. At the start of the week, you will receive a menu for the week, including Standard, Vegetarian, Vegan, and healthy options. You will then have to book online at least 24 hours beforehand. As part of Rubix Cluster you will have access to book at Heemstede or Metanoia, who offers Halal meals.

## CAN I WASH MY LAUNDRY IN NERINA?

Yes! We have five washing machines and three tumble driers in Nerina that is available for any resident to use at any time. One wash costs R30, that will be deducted from your student account. Just put in the detergent, tap your student card, press start, and wait 30 minutes. Alternatively, you can ask our friendly laundry tannie to wash your laundry for R45 per bundle.

# FAQ's

## IS THERE PARKING AVAILABLE FOR MY CAR AT NERINA?

Unfortunately, we can only provide parking to a limited number of newcomers at Nerina, seeing as seniors get preference. If you apply for parking and do not receive parking at Nerina, you will receive parking close to the Engineering Faculty. We encourage you to rather leave your car at home – Stellenbosch is beautiful to walk through, and Stellenbosch traffic is a nightmare!

## AM I ALLOWED TO HAVE VISITORS IN NERINA?

After Welcoming you will be able to host guests in Nerina. You are limited to sign in two visitors at a time from 09:00 until 00:00 during the week and 01:00 during the weekends. From 17:00 they must leave a form of identification, like a student card, at the door with the door monitors so that we can make sure that all guests leave Nerina at the end of the day. You must accompany your guests wherever they go, and they are only allowed

# university registration

All new students are required to register before the start of the academic year. We will communicate how to do this when the time comes, which is usually at the end of January.

If you are unable to register or require our assistance during the Welcoming period, please bring the following documents with:

- Advice of Results of the 2025 NSC or IEB final school leaving exam (if you matriculated before 2025, those results can also be brought).
- Printed proof of payment of course and residence deposit.
- If you are not a South African citizen: A valid study permit and/or passport.



# important dates

## MOVING IN

**Law students:** Due to their academic programme starting earlier, our Law students can move in to Nerina on Monday, 26 January, from 14:00 to 16:00.

**Other students:** The rest of the students are allowed to move in on Tuesday, 27 January, from 08:00 to 14:00.

## DINNER WITH NERINA

You and your parents, guardians, or any two guests are invited to join us for dinner on the first day of Welcoming. This will be the perfect opportunity to meet your new family and orient yourself with your new home.

**Date:** Tuesday, 27 January 2026

**Time:** 17:00 – 19:30

## CONNECT

**Performance:** Saturday, 7 February 2026

# checklist

## CONNECT

- White t-shirt
- Black t-shirt
- Black bottoms that are comfortable to dance in
- Glitter (if you have)
- Flannel shirt (if you have)

## ROOM

- Mattress cover
- Bedding
- Bath Towel and shower essentials
- Laundry basket/bag
- Cutlery and crockery
- Dish soap, sponge, and towel
- Small fan
- Desk Lamp
- Two-point plugs and extension cords
- Locks (door and closet)
- Shower flipflops

We recommend on waiting to meet your roommate to talk about refrigerators - maybe you can share!

## PLEASE DO NOT BRING

- Bar heaters
- Spiral plate stoves
- Candles and open flamed objects

## GENERAL

- Sunscreen
- White t-shirt
- Blue t-shirt
- Refillable water bottle
- Black outfit (semi-formal)
- Red outfit (smart-casual)
- White outfit (semi-casual, but comfortable)
- Active wear
- Comfortable walking shoes, like tekkies
- Permanent marker to mark your Nerina merchandise

# STAYING SAFE IN STELLIES 101

1. Ensure that you have your section NCC, Executive, and Vice-Executive Leaders' cell phone numbers saved on your phone.
2. Ensure that you have Campus Security and the emergency services numbers saved as favourites on your phone.
3. During Welcoming we will use a buddy system. Therefore, you will be accountable for your roommate and vice versa. Please ensure you tell your roommate and section NCC if you have left res and where you will be going.
4. Do not do anything you feel uncomfortable with. Remove yourself immediately from situations/environments where you feel uncomfortable/unsafe.
5. Only go to places or events with people you trust, and you know will look after you in tough situations.
6. Avoid walking in isolated and/or dark areas.
7. Walk in groups whenever possible — especially at night!
8. Carry pepper spray, a whistle, or any other tool that can help you in an emergency.
9. Tell someone where you are going and share your live location with them.

You can call Campus Security to walk with you at any time — from campus to res, or even from town. Rather safe than sorry!

# important contact numbers

## SAFETY

Karabo Masilela (Safety and Discipline):	062 799 78 78
Campus Security:	021 808 2333
Campus Security Night Escort:	082 808 2333
Police Flying Squad:	10111

## HEALTH

Campus Health Services:	021 808 3496
ER24 Ambulance:	084 124
Medi-Clinic (Emergency):	021 861 2094
Stelkor Doctors:	021 887 0305
Stellenbosch Dental Studio:	021 887 6787

## CRISIS

CSCD 24h Crisis Line:	082 557 0880
Adcock Ingram Depression & Anxiety Helpline:	0800 70 80 90
Rape Crisis Line:	021 447 9762
Gender Based Violence Command Centre:	0800 428 428
Marie Botha Clinical Psychologist:	079 102 6425
Minnie Loubser Clinical Psychologist:	078 869 3602

## DRIVING SCHOOLS

Kenlyn Driving School:	083 660 0569
Delta Driving School:	072 300 1301

# Eco-friendly living

How to reduce your carbon footprint and join the Net Zero Carbon journey

## Water

- Water restrictions still apply.
- Use only 80 L /person/day.
- Shower 3 -5 min.
- Use eco-friendly personal products.
- No rinsing or washing with running water.

## Transport

- Everything is within easy walking distance on campus.
- Walk or cycle instead of driving.
- Hire a Matie bike.
- Share rides or use shuttles.

## Get involved


- Join your community Green/ Sustainability Com.
- Follow: @su.environmental.sust

## Energy

- Use LED lamps only.
- Limit fridge use to one 150 L bar fridge per room.
- Airdry clothes when possible.
- Turn off lights & unplug devices when not in use.
- Use A++ energy efficient appliances (low wattage).

## Waste

- SU has a zero waste to landfill goal.
- Buy less items that must be thrown away.
- Bring reusable bags, cups, bottles and containers - no single use items.
- Compost food scraps & sort recyclables properly.
- No wet items in the recycling bin.

A group of people, mostly young women, are standing in a circle on a paved area. They have their arms raised, and their hands are touching or near each other, forming a human pyramid or a similar celebratory gesture. They are wearing casual summer clothing like dresses, shorts, and t-shirts. The background shows a building with windows.

If you have any questions or queries, feel free to contact any of the following people:

## Robyn Hough



Welcoming Leader  
[27932419@sun.ac.za](mailto:27932419@sun.ac.za)  
(066) 215 0752

## Julie Seynhaeve

Executive Leader  
[27163970@sun.ac.za](mailto:27163970@sun.ac.za)  
(072) 874 4080

## Joy Petersen

Residence Head  
[jp11@sun.ac.za](mailto:jp11@sun.ac.za)  
(082)6991707

 [nerinaresidence](#)  
 [nerina2@sun.ac.za](mailto:nerina2@sun.ac.za)

**we cannot wait to meet you!**